

FROM THE OFFICE OF

CHARLES O. GEORGI COMPANY

2215 West County Road B

Saint Paul 13, Minnesota

REGISTERED CIVIL ENGINEER AND LAND SURVEYOR

Certificate of Survey

I Hereby Certify that this plat shows a survey made by me of the property described on this plat, and that the corners are correctly placed as shown, and that all locations have been correctly shown.

Surveyed For *M. Haeyer*

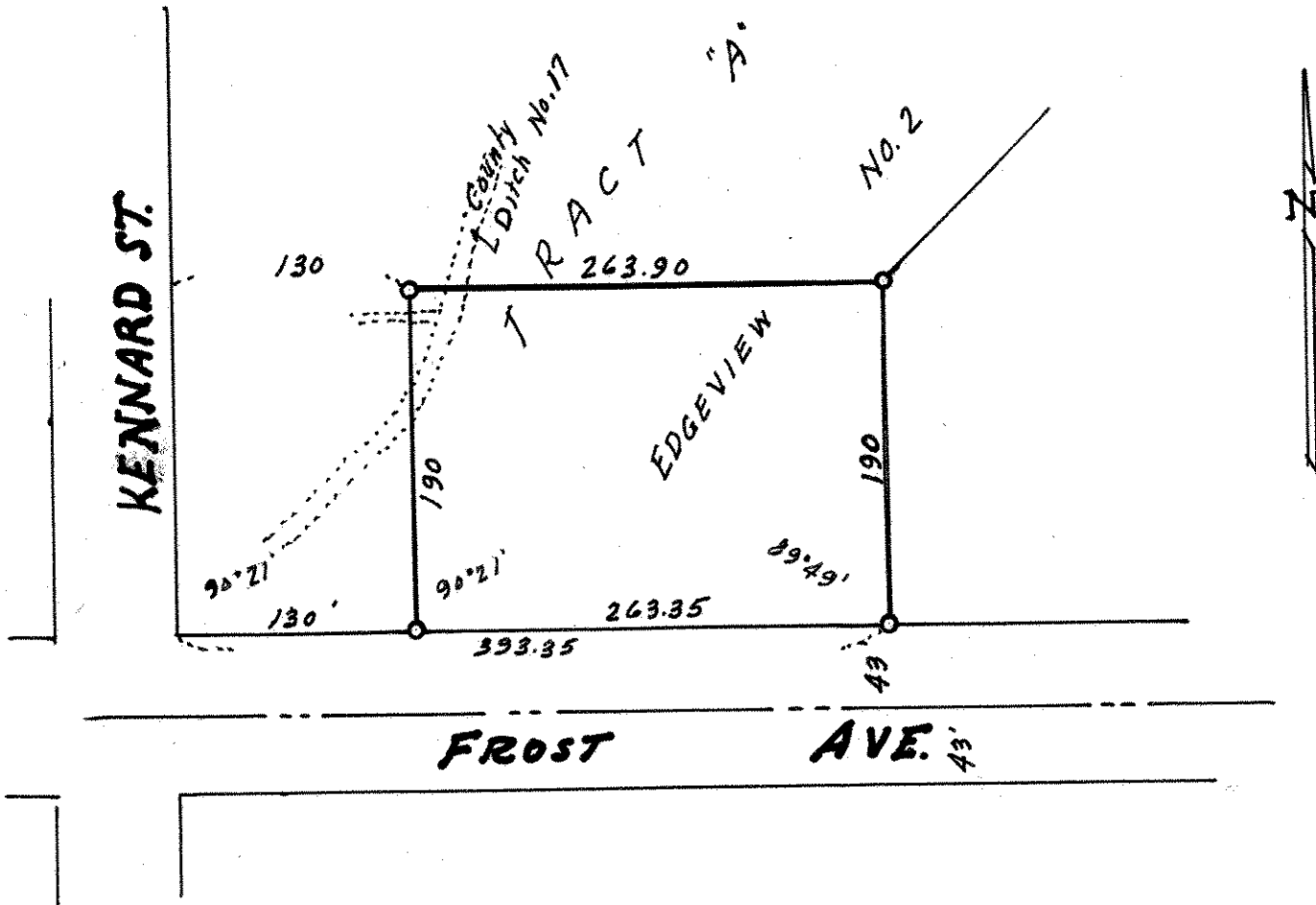
Date *September*

Scale *1958*

By *Charles O. Georgi*
REGISTERED LAND SURVEYOR

Description:

The South 190 feet of Tract "A," Edgeview No 2, except the West 130 feet thereof, subject to any ditch easements of record.



o Denotes Iron Monument