

FROM THE OFFICE OF

CHARLES O. GEORGI COMPANY

2215 West County Road B

Saint Paul 13, Minnesota

REGISTERED CIVIL ENGINEER AND LAND SURVEYOR

Certificate of Survey

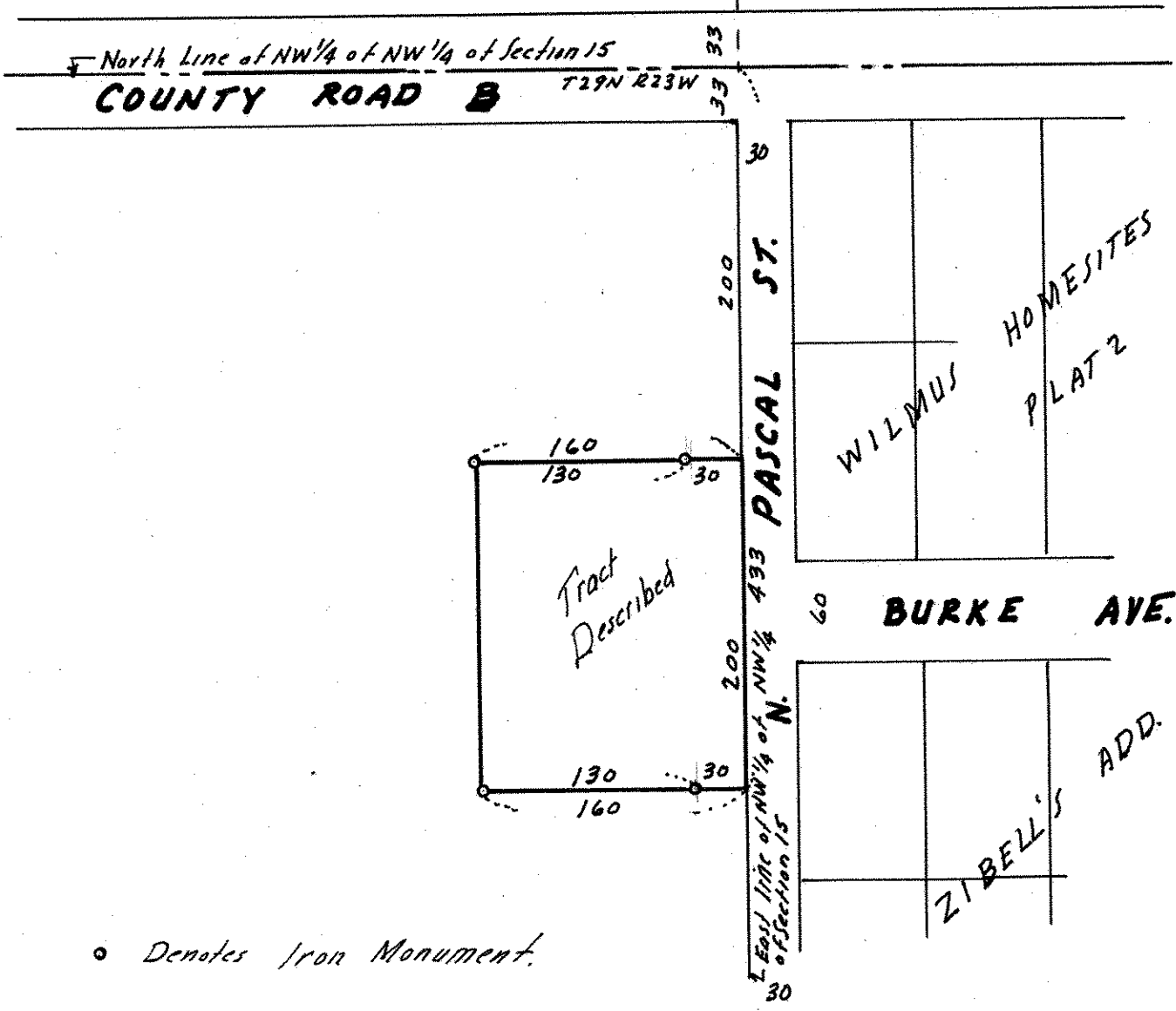
I Hereby Certify that this plat shows a survey made by me of the property described on this plat, and that the corners are correctly placed as shown, and that all locations have been correctly shown.

Surveyed For *D. Roberts*
Date *June 1958*
Scale *1"=100'*

By *Charles O. Georgi*
REGISTERED LAND SURVEYOR

Description:

*The south 200 feet of the North 433 feet
of the East 160 feet of the NW 1/4 of the NW 1/4
of Section 15, T29N, R23W.*



o Denotes Iron Monument.