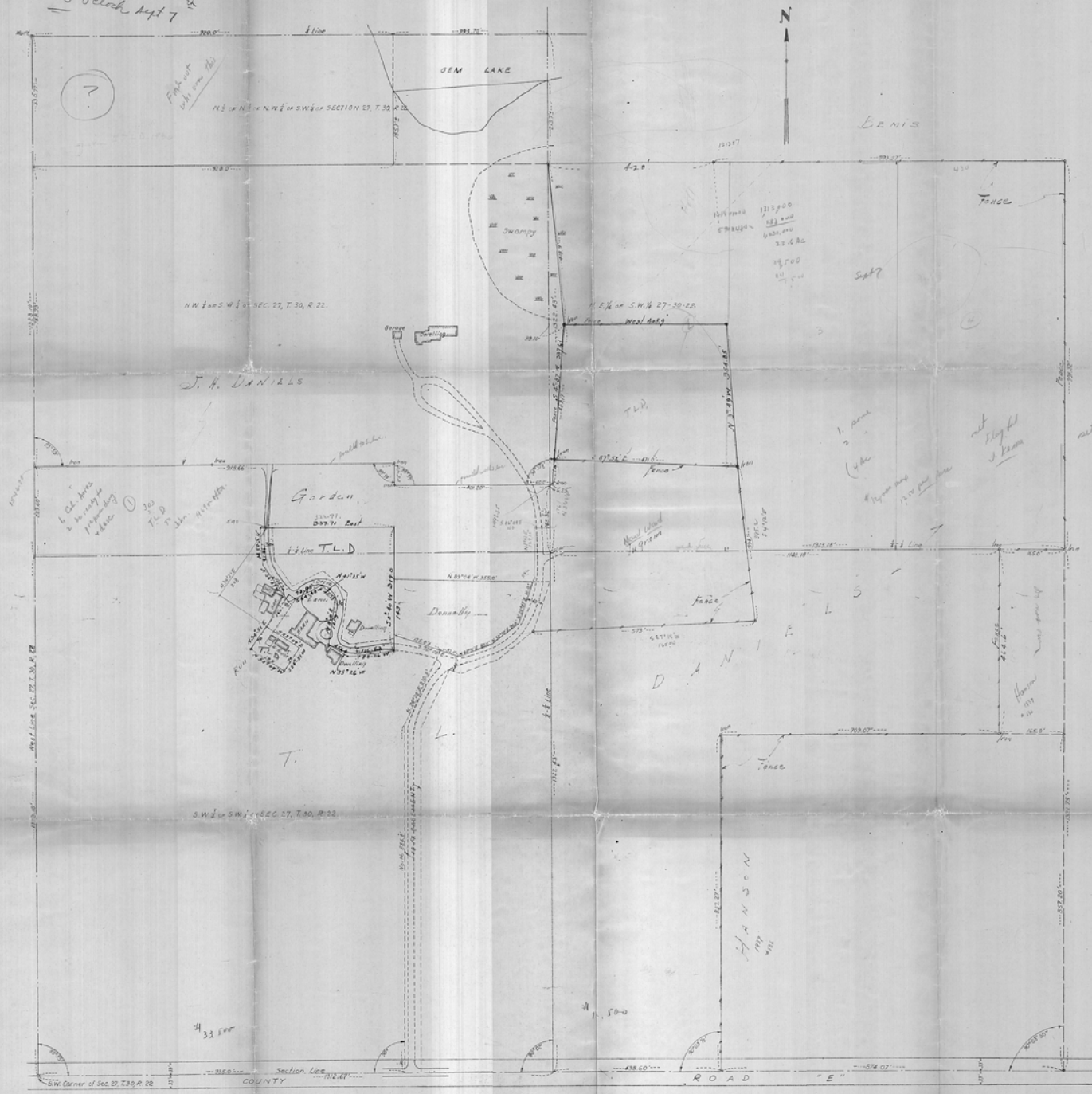


Order Request  
339-9497  
10:00 clock, Sept 7



SAVE - Only Copy  
Return to Auditor  
Chas. George

SCALE: 1 inch FOR 100 FEET

PLAT OF SURVEY -  
PART OF THE SW 1/4 SECTION 27, TOWNSHIP 30,  
RANGE 22, RAMSEY COUNTY, MINNESOTA.  
DATED: December 5<sup>th</sup> 1906  
A. J. ARMSTRONG  
CIVIL ENGINEER

SAVE THIS COPY  
As it is only one we  
have. Return to Auditor  
or Chas. George