

SURVEY OF

The East 523 feet of South 10 acres of E. 1/2 of E. 1/2 of S.E. 1/4 of Section 1, T.29 N., R.23 W. excepting the South 231 feet thereof.

Also the South 10 acres of E. 1/2 of E. 1/2 of S.E. 1/4 of Section 1, T.29 N., R.23 W. excepting the East 523 ft. thereof.

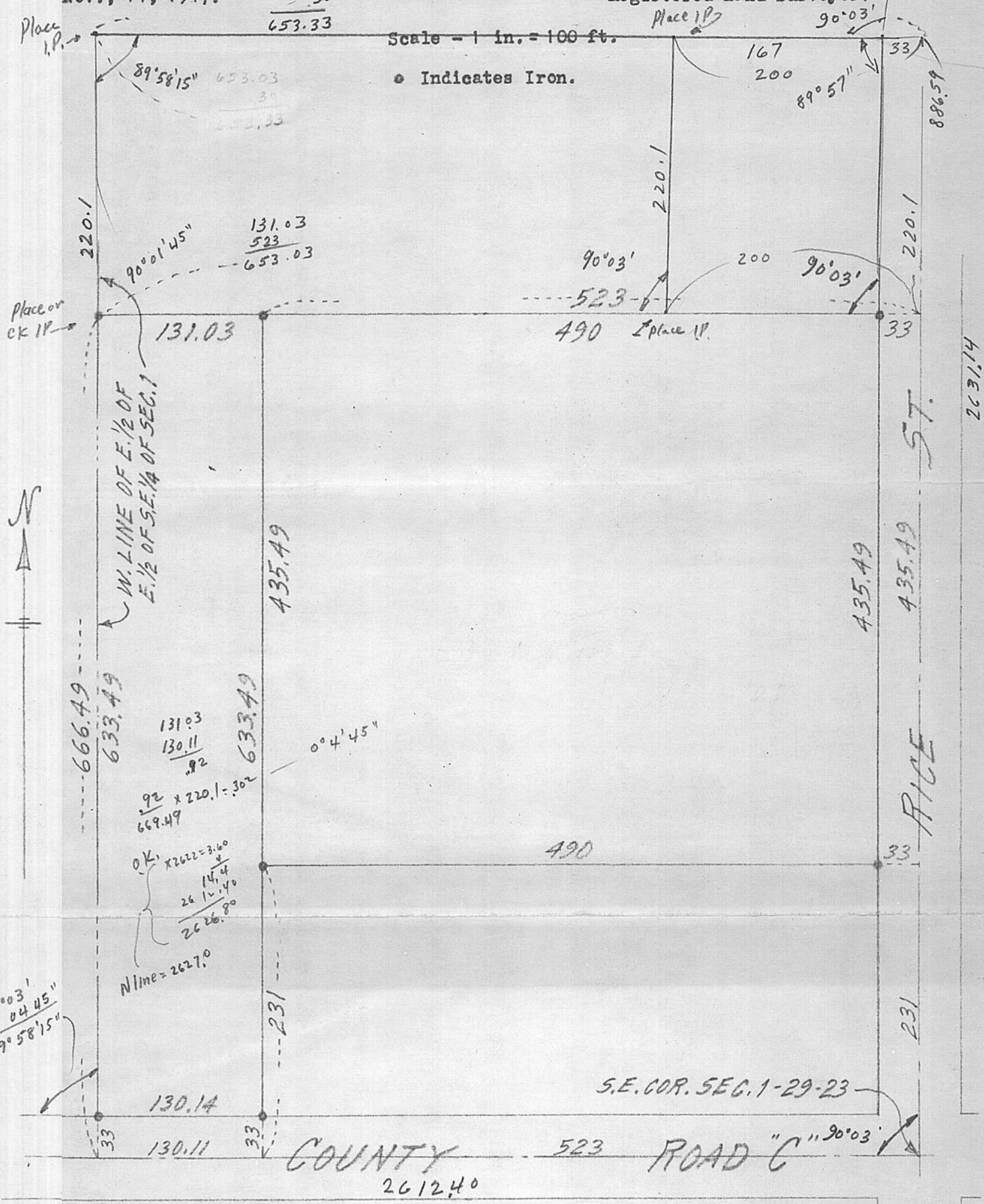
R. H. Wolgram
Registered Land Surveyor.

Nov., 14, 1947.

$\frac{653.03}{30}$
653.33

Scale - 1 in. = 100 ft.

• Indicates Iron.



Place I.P.

Place I.P.

Place or CK I.P.

Place I.P.

W. LINE OF E. 1/2 OF E. 1/2 OF S.E. 1/4 OF SEC. 1

RICE ST.

RICE ST.

S.E. COR. SEC. 1-29-23

COUNTY

ROAD C

B77 #366
Dup sp/L in RP.
958.02