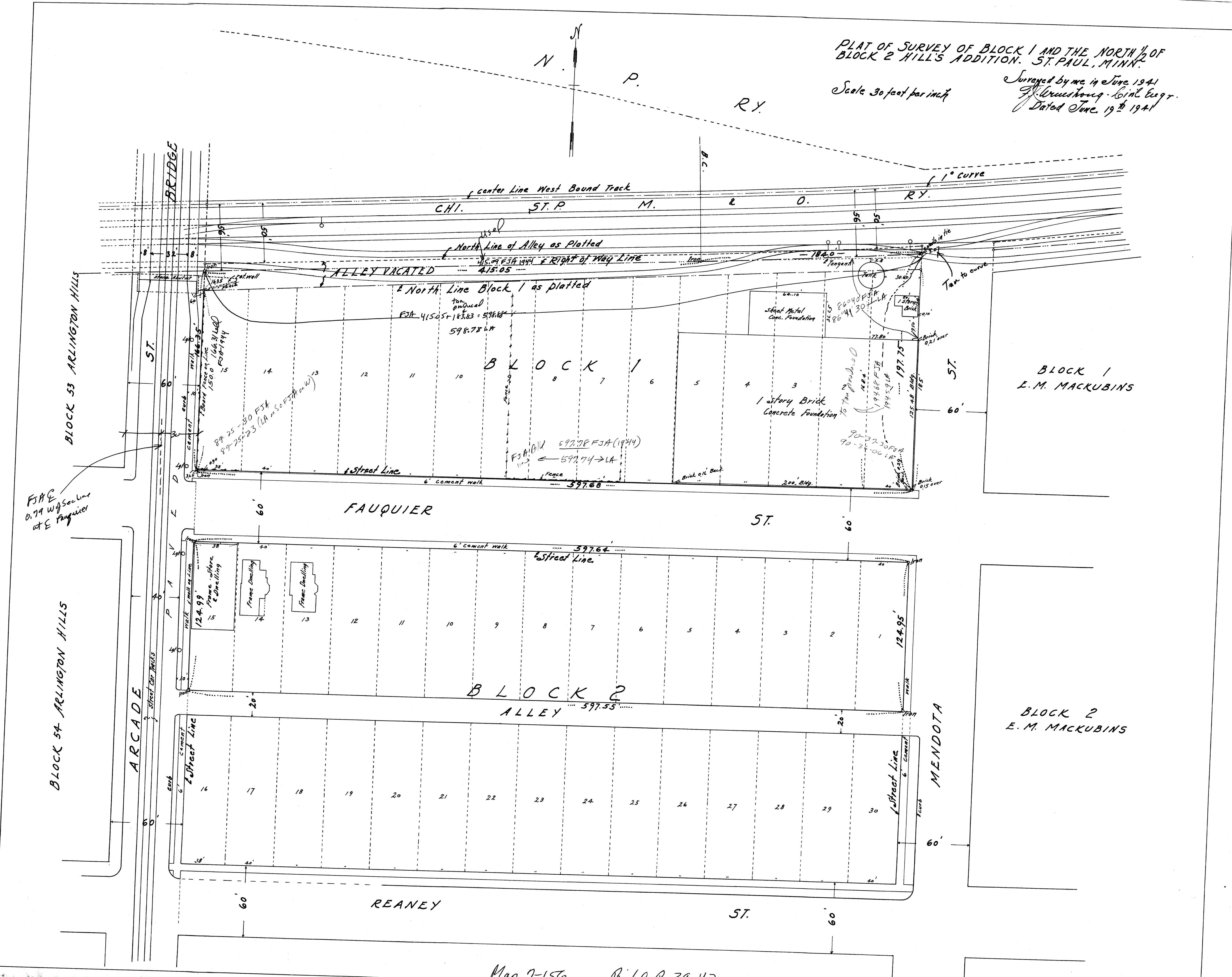
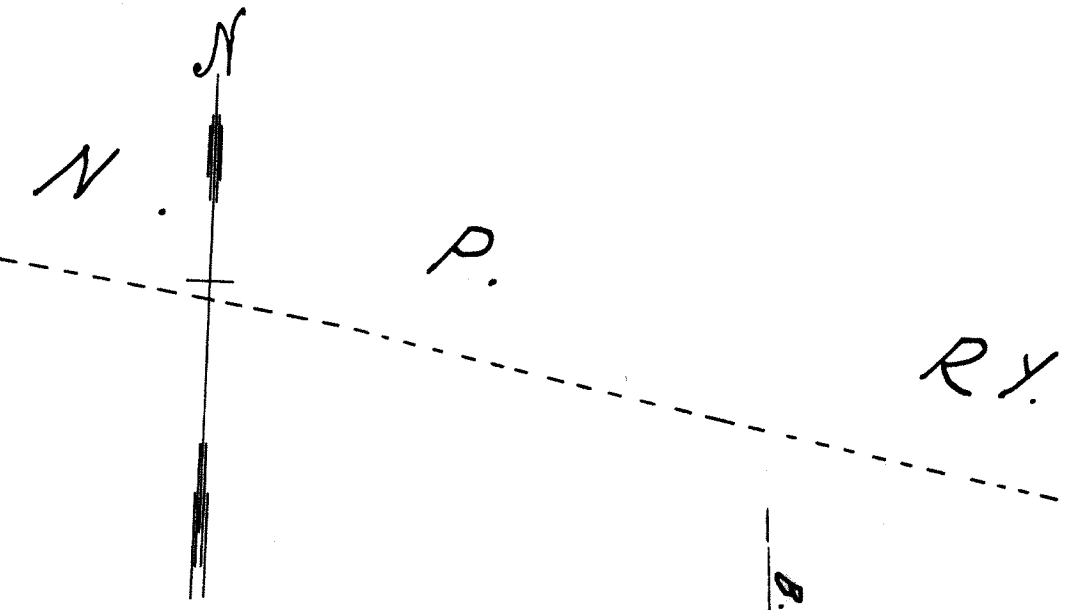


PLAT OF SURVEY OF BLOCK 1 AND THE NORTH 1/2 OF BLOCK 2 HILLS ADDITION. ST. PAUL, MINN.

Scale 30 feet per inch

Surveyed by me in June 1941
F. Drummond, Civil Engr.
Dated June 19th 1941



BLOCK 33 ARLINGTON HILLS

F.A.C.
0.74 W. Sec. line
of E. Fauquier

BLOCK 54 ARLINGTON HILLS

ARCADÉ

FAUQUIER

BLOCK 2

ALLEY

REANEY

ST.

MENDOTA

BLOCK 1
E. M. MACKUBINS

BLOCK 2
E. M. MACKUBINS