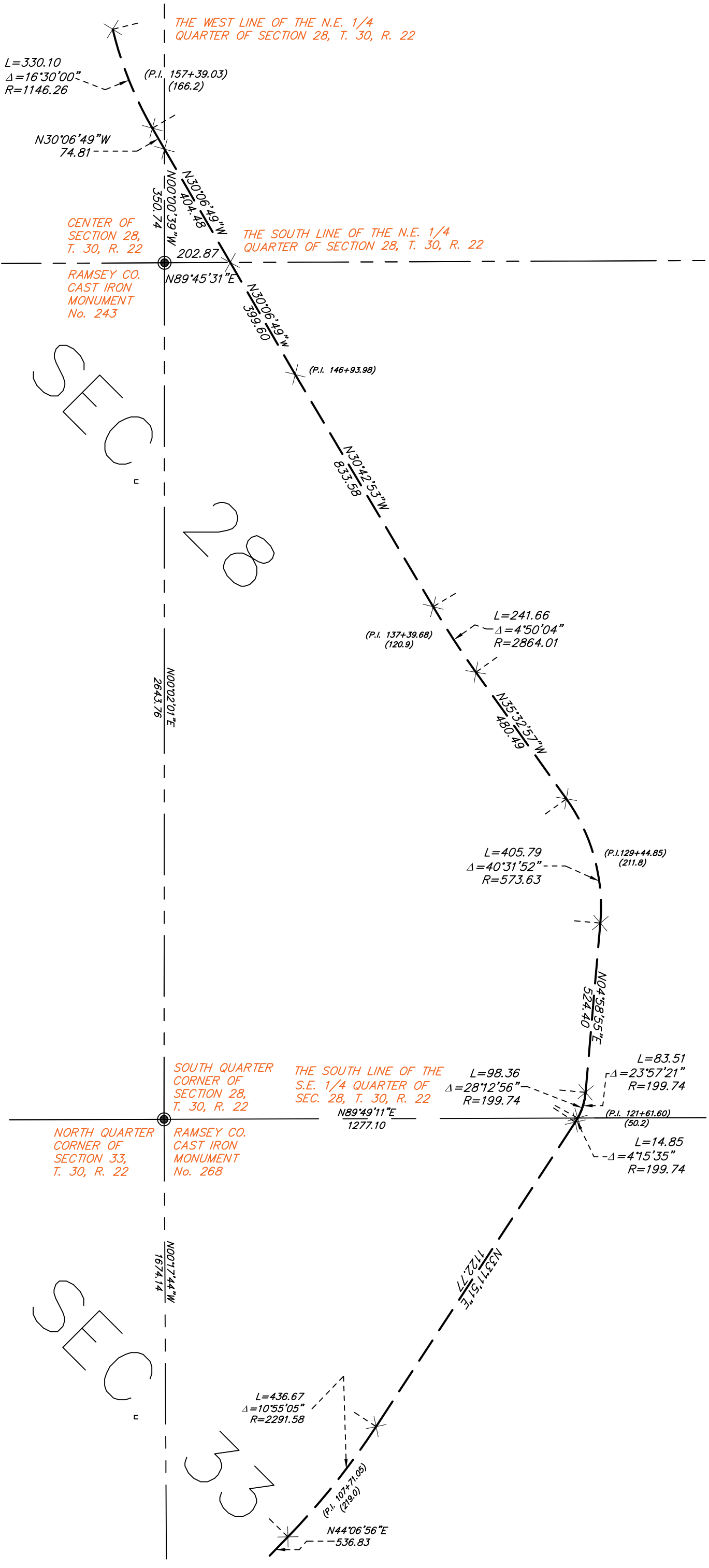


# 1938 Centerline of LABORE ROAD Section 28 & 33, T 30N, R 22W



**NOTES**  
The bearings and distances shown on this depiction are based on the Ramsey County Coordinate System NAD83 (1986 Adj.).



SCALE IN FEET  
0 75 150 300  
1 inch = 300 feet

**LEGEND**

⊙ Denotes Ramsey County cast iron monument.  
LABORE ROAD  
(0+00) = Station or Tangent Length  
Field Notes from: Office of County Engineer,  
Ramsey Co., Minn. Road Acct. No. 4  
Date Filed: 12-28-38 Book: 151 Drawer: 8  
From: Edgerton Street To: Centerville Road

**DESCRIPTION**

LABORE ROAD CENTERLINE  
EDGERTON STREET TO CENTERVILLE ROAD  
1938 CENTERLINE SURVEY  
ADJUSTED TO FIT SECTION CORNERS  
Sections 28 & 33, T.30 N., R.22 W  
NAD83 1986 ADJUSTMENT