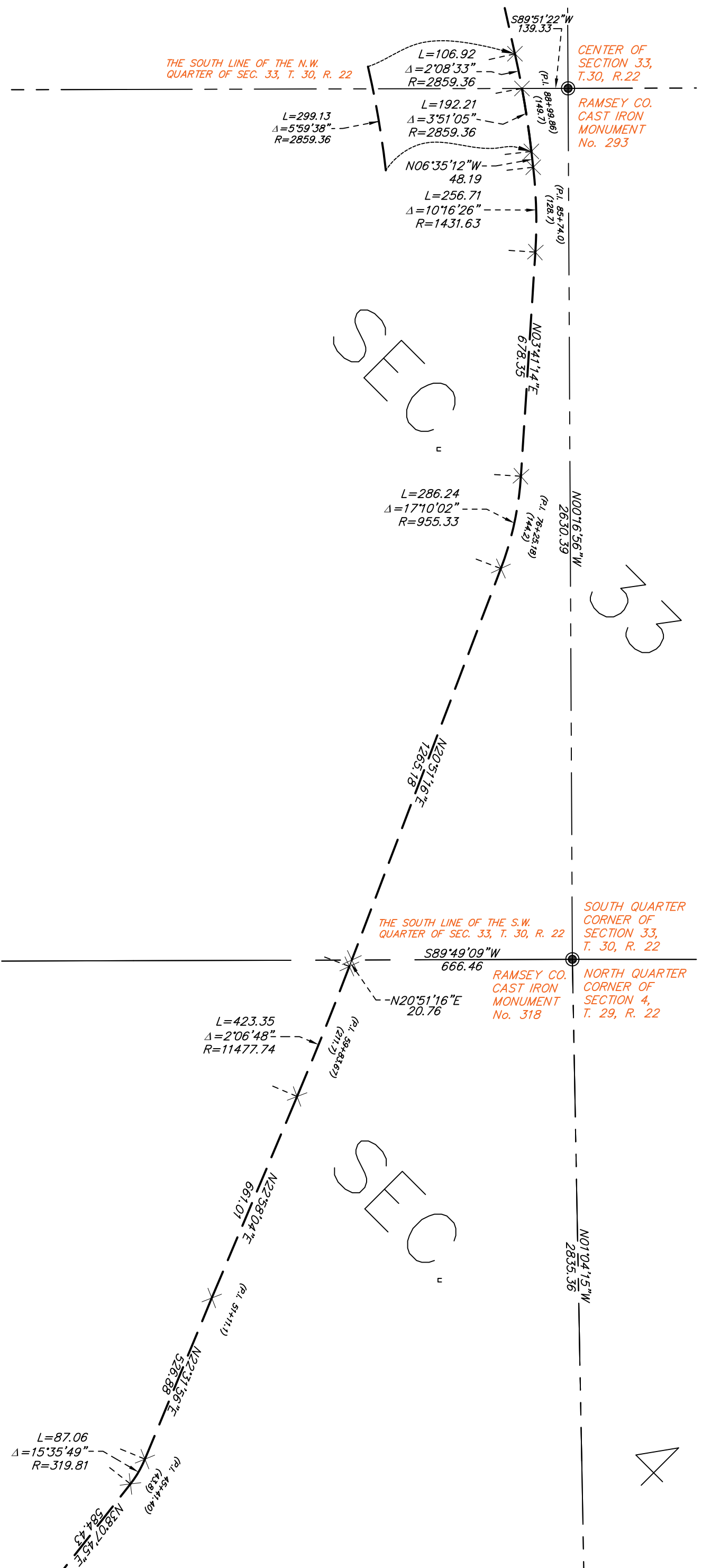


1938 Centerline of LABORE ROAD (Adjusted)

Section 33, T30N, R22W & Section 4, T29N, R22W



NOTES

The bearings and distances shown on this depiction are based on the Ramsey County Coordinate System NAD83 (1986 Ad.).

LEGEND

● Denotes Ramsey County cast iron monument.

LABORE ROAD

(0+00) = Station or Tangent Length
Field Notes from: Office of County Engineer,
Ramsey Co., Minn. Road Acct. No. 4

Date Filed: 12-28-38 Book: 151 Drawer: 8
From: Edgerton Street To: Centerville Road

DESCRIPTION

LABORE ROAD CENTERLINE

EDGERTON STREET TO CENTERVILLE ROAD
1938 CENTERLINE SURVEY

ADJUSTED TO FIT SECTION CORNERS

Section 4, T.29 N, R.22 W &

Section 33, T.30 N, R.22 W

NAD83 1986 ADJUSTMENT

