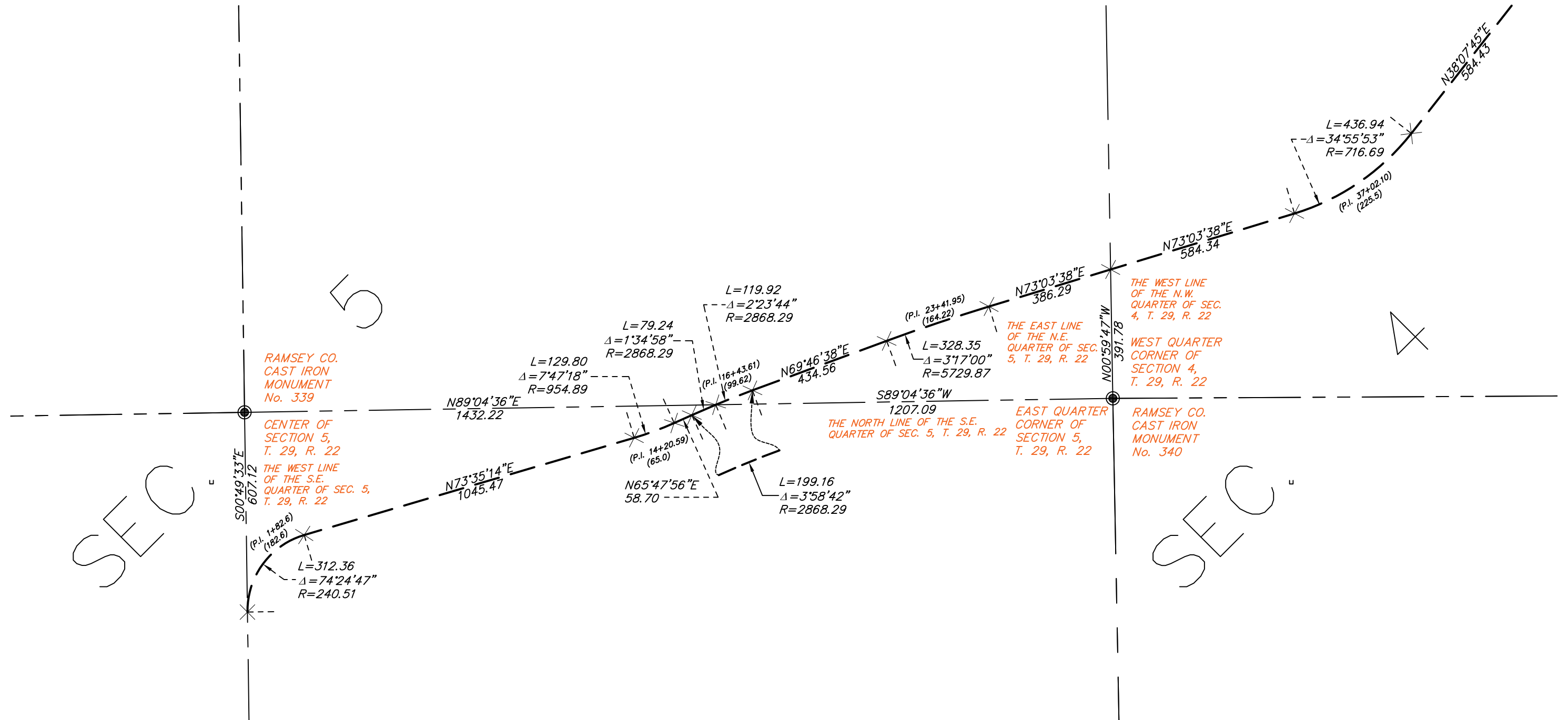
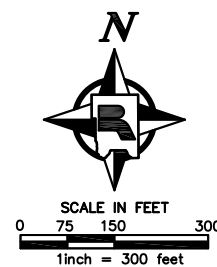


# 1938 Centerline of LABORE ROAD (Adjusted) Sections 4 & 5, T29N, R22W



### NOTES

The bearings and distances shown on this depiction are based on the Ramsey County Coordinate System NAD83 (1986 Adj.).



### LEGEND

● Denotes Ramsey County cast iron monument.

LABORE ROAD  
(0+00) = Station or Tangent Length  
Field Notes from: Office of County Engineer,  
Ramsey Co., Minn. Road Acc't. No. 4

Date Filed: 12-28-38 Book: 151 Drawer: 8  
From: Edgerton Street To: Centerville Road

### DESCRIPTION

LABORE ROAD CENTERLINE  
EDGERTON STREET TO CENTERVILLE ROAD  
1938 CENTERLINE SURVEY  
ADJUSTED TO FIT SECTION CORNERS  
Sections 4 & 5, T.29 N, R.22 W  
NAD83 1986 ADJUSTMENT