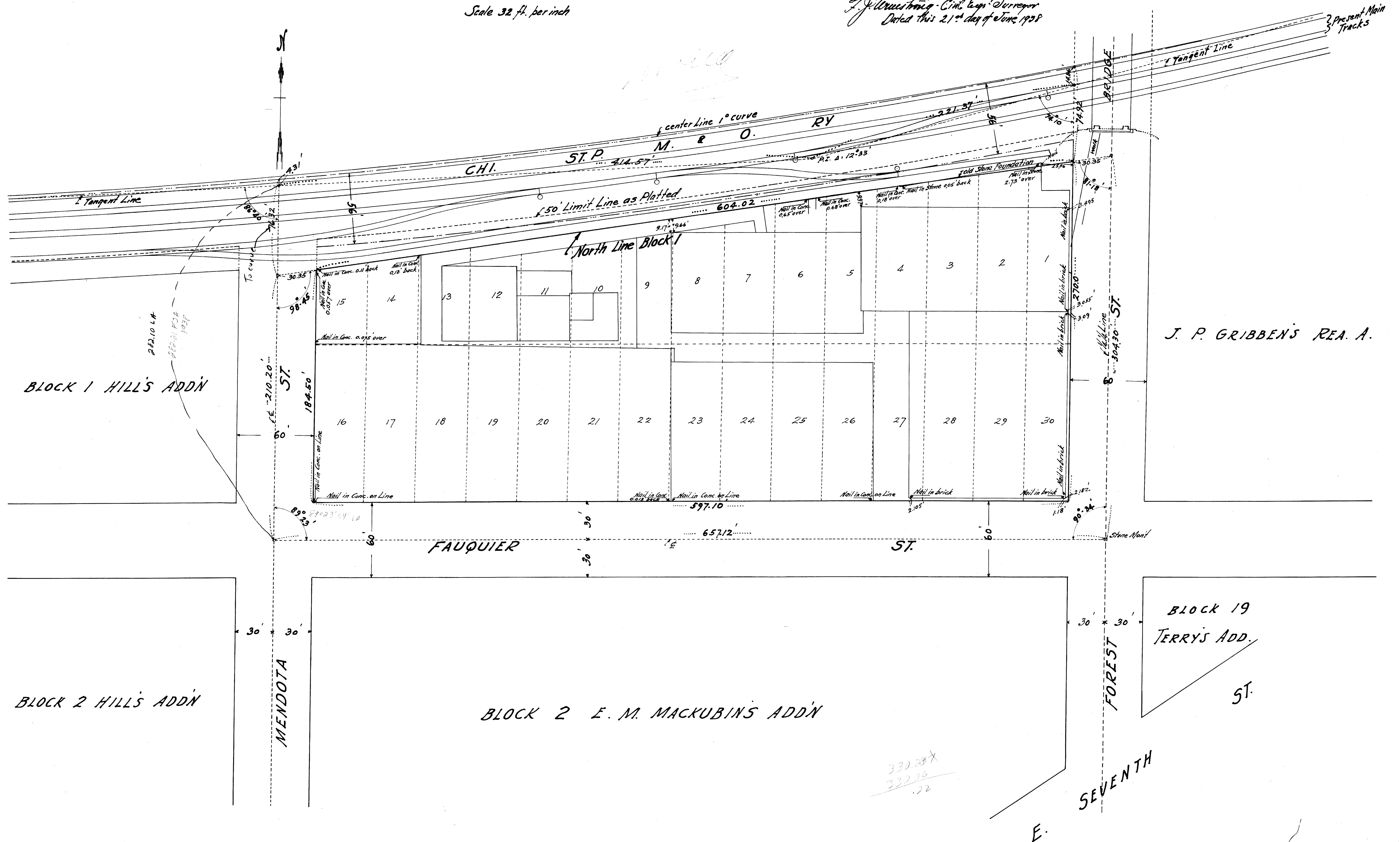


**SURVEY OF BLOCK 1 E. M. MACKUBIN'S ADDN.  
ST. PAUL, MINN.**

Scale 32 ft. per inch

Surveyed by me in May & June 1938  
J. J. Crossin - Civil Engr. & Surveyor  
Dated this 21<sup>st</sup> day of June 1938



Map 7-155 B. 57 P. 2-7