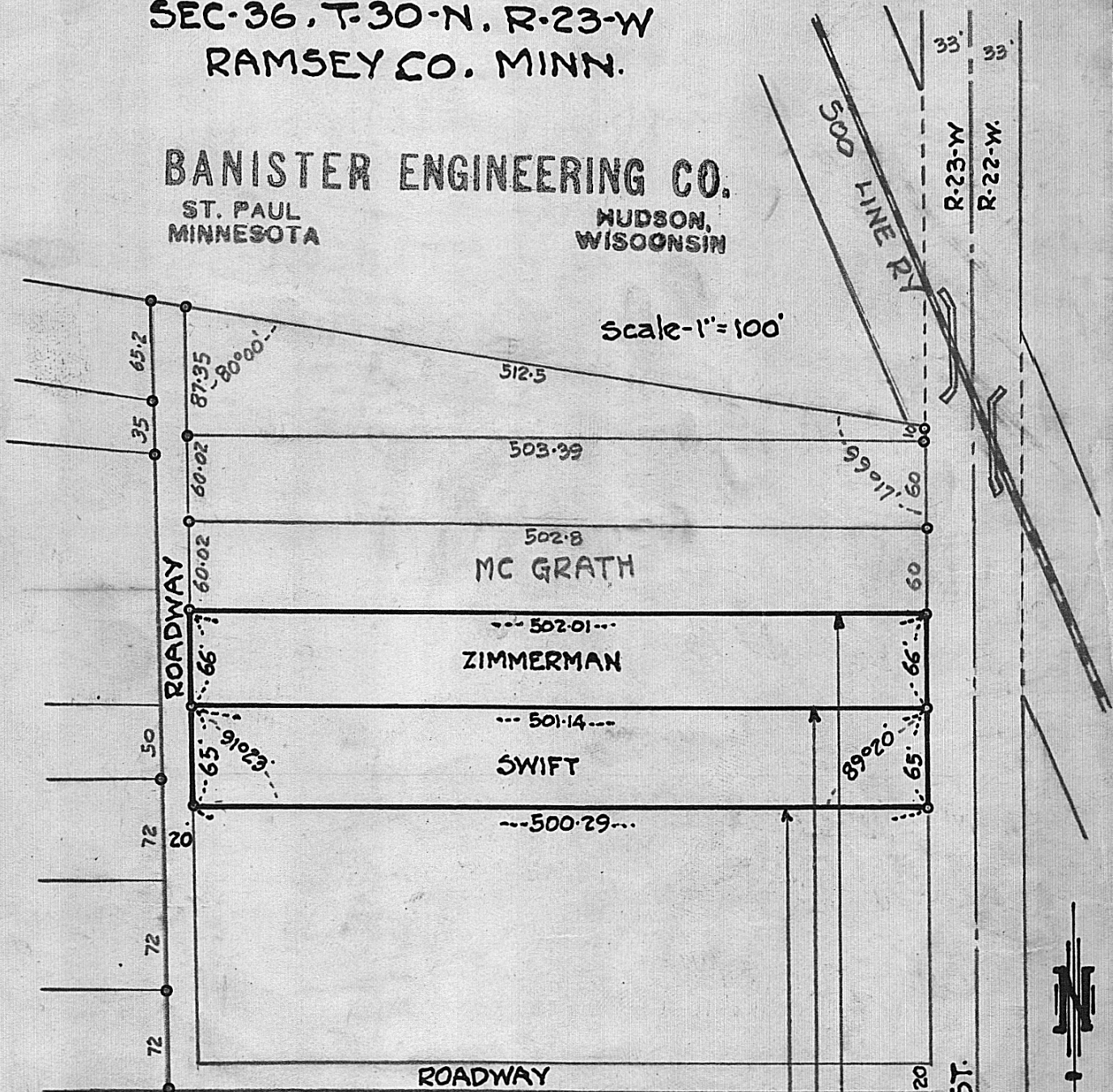


SURVEY OF PART OF GOV. LOT-5  
 SEC-36, T-30-N, R-23-W  
 RAMSEY CO. MINN.

BANISTER ENGINEERING CO.  
 ST. PAUL MINNESOTA  
 HUDSON, WISCONSIN



We, the Banister Engineering Co. of St. Paul, Minn Registered Professional Engineers, hereby certify that we have surveyed the property shown on the annexed plat for Mr. Swift and Mr. Zimmerman, have surveyed same according to recorded deeds, have placed iron monuments at the corners shown on plat and that the annexed plat is a true and correct plat of said survey

Signed-Banister Engineering Co.

By P. R. Banister  
 June, 11, 1936

South Line Gov. Lot-57

SE. Cor. Sec-36-30-23