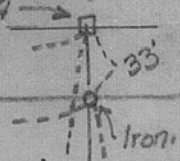


City Rd. "D" N.E. 4-29-22
Stone Mon. N.E. Cor. Sec. 4

---661.6---

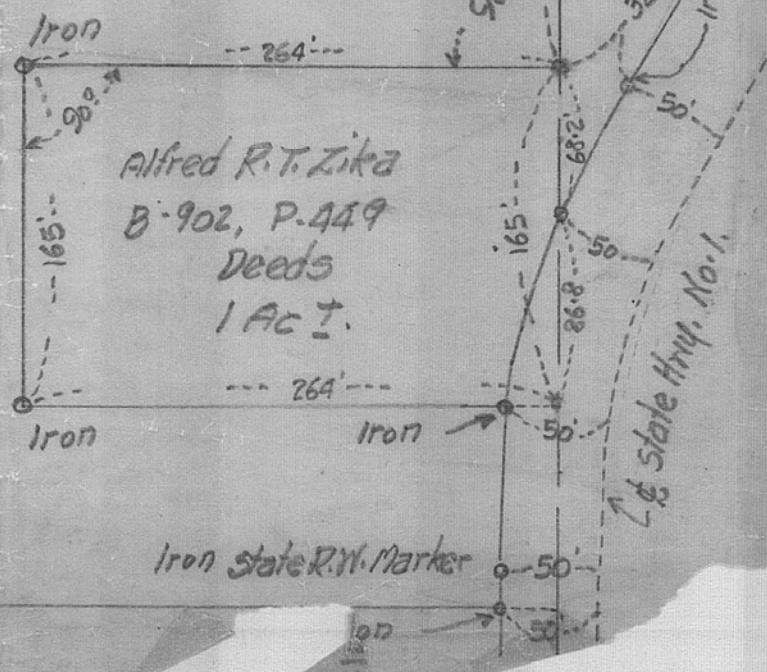


Joseph Zika and Mary (Wife)
B-593, P-105 Deeds
15.23 AC.

N. 45.5 Sec. line between Secs. 3 and 4-29-22

This line Run Direct from N.E. Cor. Sec. 4 stone Mon. South to E 1/4 Cor. of Sec. 4.

---1006---



Alfred R. T. Zika
B-902, P-449
Deeds
1 AC.

P. Q. Banister
Consulting Engr.
North St. Paul, Minn.
March, 16, 1933

Scale - 1" = 100'