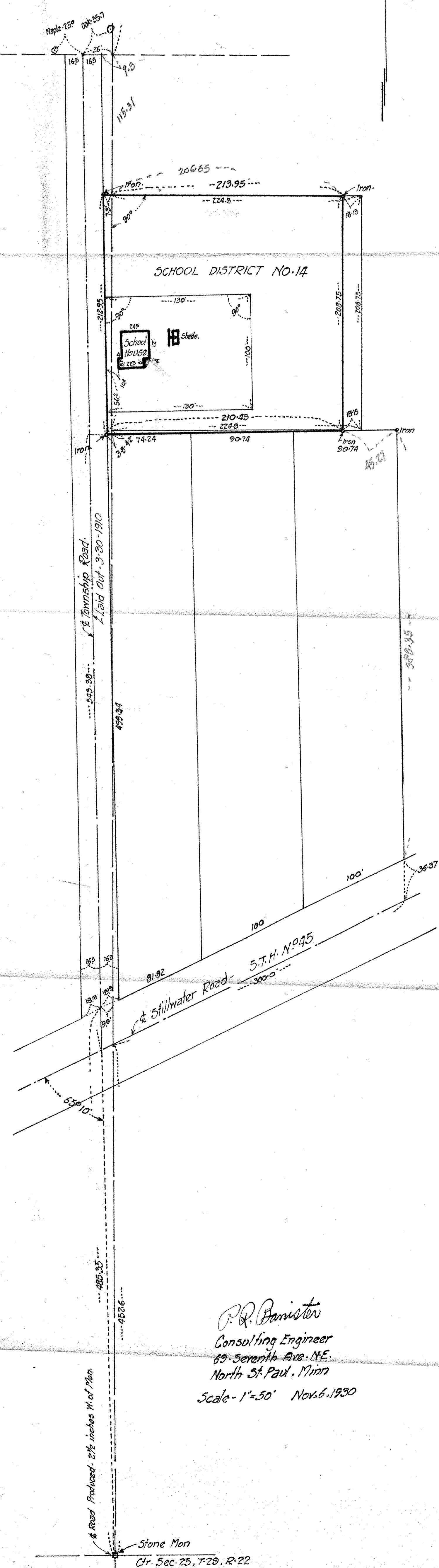


Stone Mon.
 1/4 Cor between Sections 24 and 25, T-29, R-22
 Ramsey County, Minn.



P. Q. Panister
 Consulting Engineer
 69 Seventh Ave. N.E.
 North St. Paul, Minn
 Scale - 1" = 50' Nov. 6, 1930

Stone Mon
 Ctr. Sec. 25, T-29, R-22