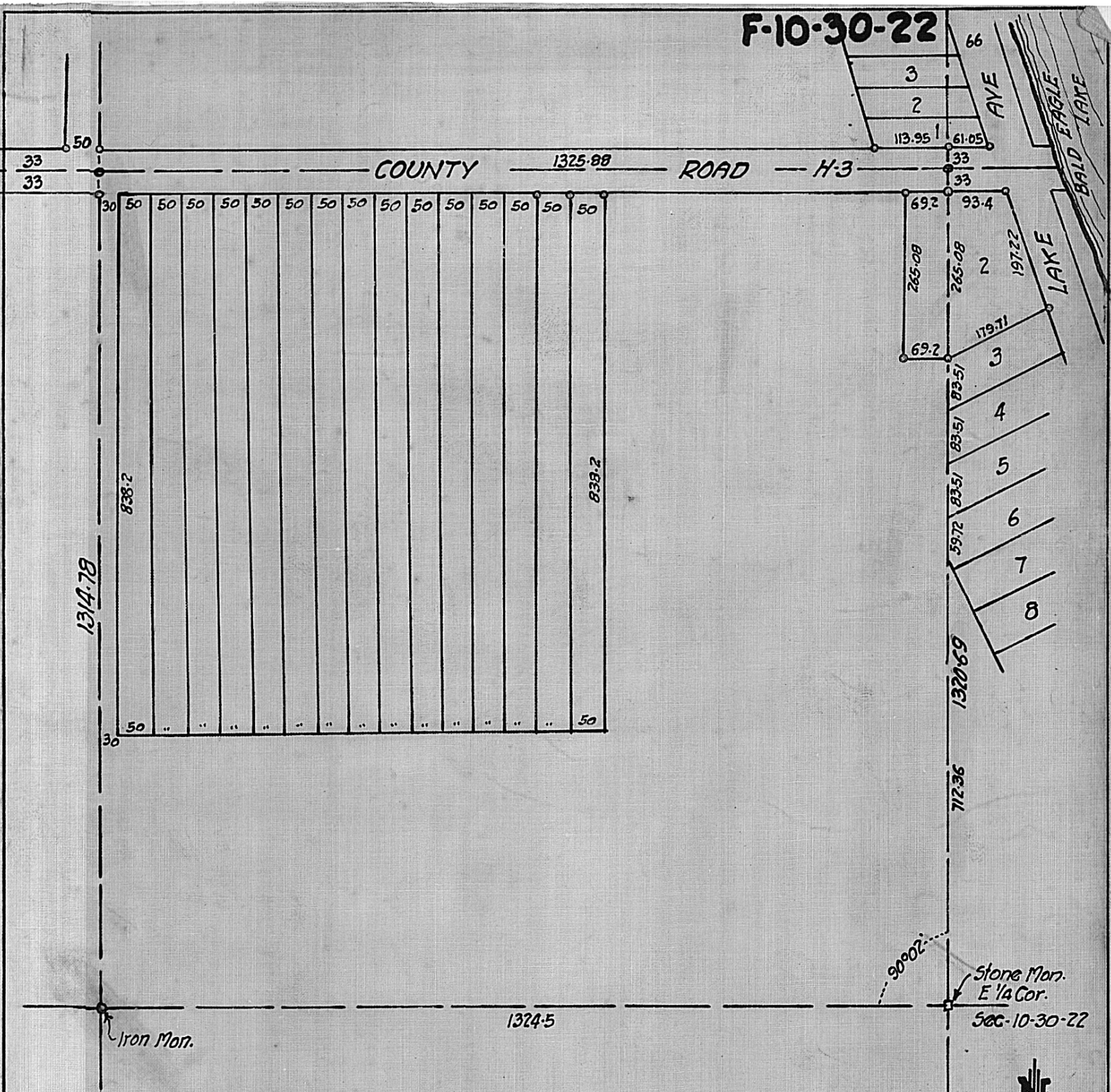


F-10-30-22



PLAT OF  
 SE 1/4 OF NE 1/4 OF SEC-10  
 TOWN-30-N, RANGE-22-W.  
 Scale-1"=200' April, 23, 1930

*P. Q. Banister*  
 Registered Professional Engr.  
 69-7th Ave. N.E. North St. Paul, Minn.

