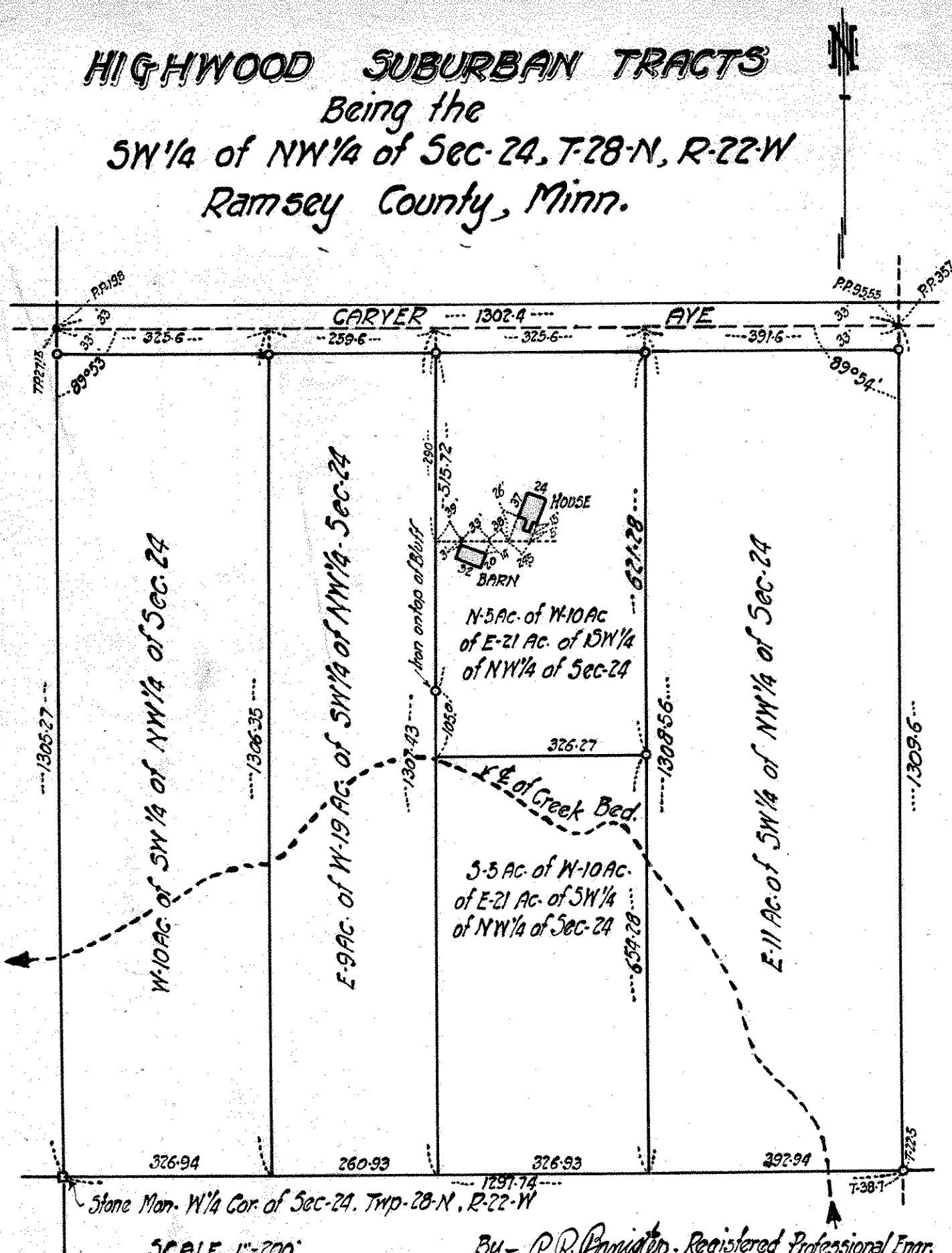


HIGHWOOD SUBURBAN TRACTS

Being the
SW 1/4 of NW 1/4 of Sec. 24, T. 28-N, R. 22-W
Ramsey County, Minn.



SCALE 1"=200'
JAN. 23, 1929

o Indicates Iron Mon.

By - P. R. Panicker, Registered Professional Engr.
Office - 69-7th Ave. North St. Paul, Minn.
Phone N. 5P. 407 - Office.

Dec. 24-28-22 448-Res.