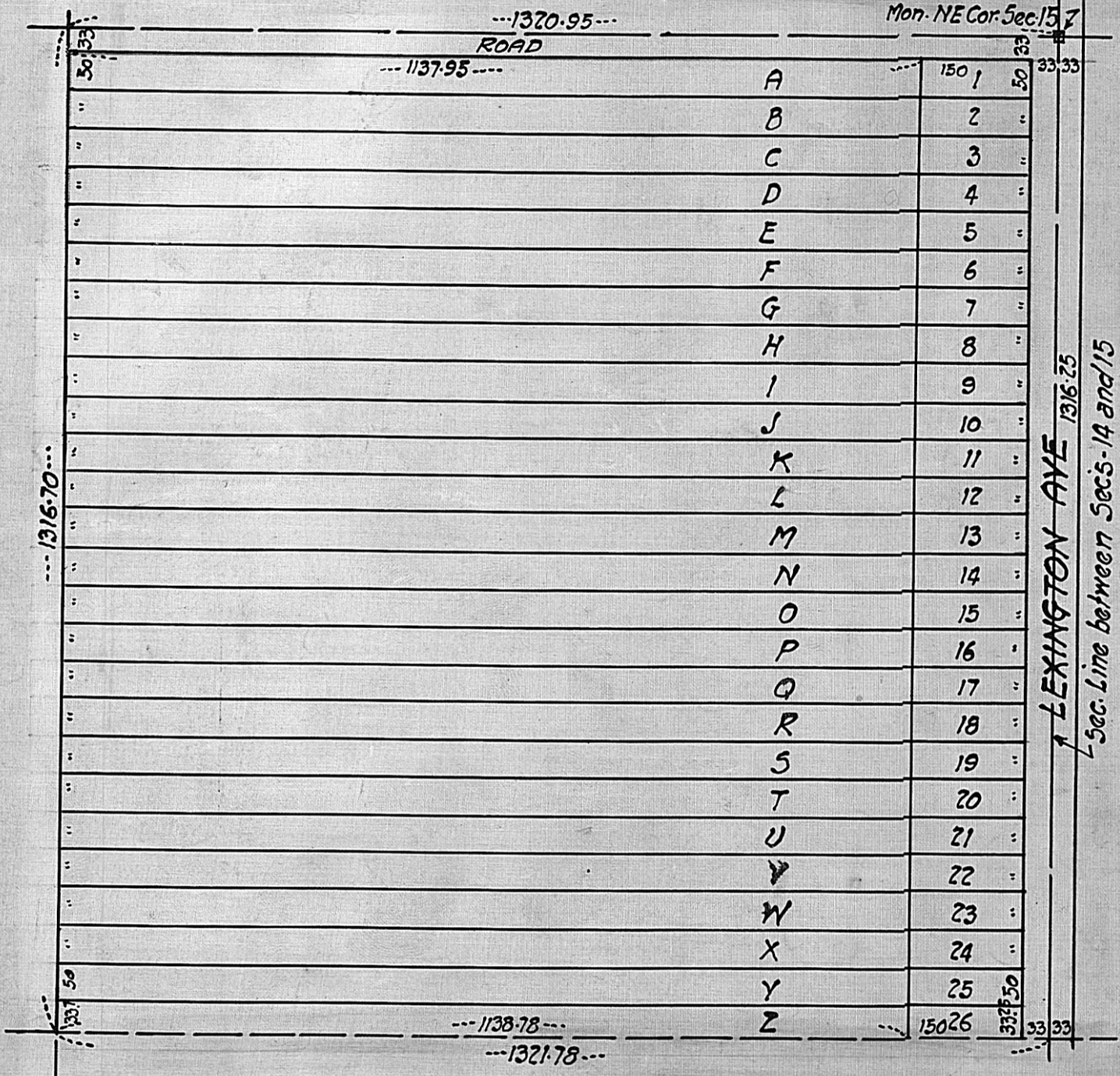


LEXINGTON SUBURBAN HOMESITES

BEING THE NE 1/4 OF NE 1/4 . SEC-15, T-30-N, R-23-W.

RAMSEY COUNTY, MINN.



March, 14, 1929 Scale-1"=200'

P.R. BANISTER - Registered Professional Engr.
69-7th Ave N.E. North St. Paul
Phone N.5P-407