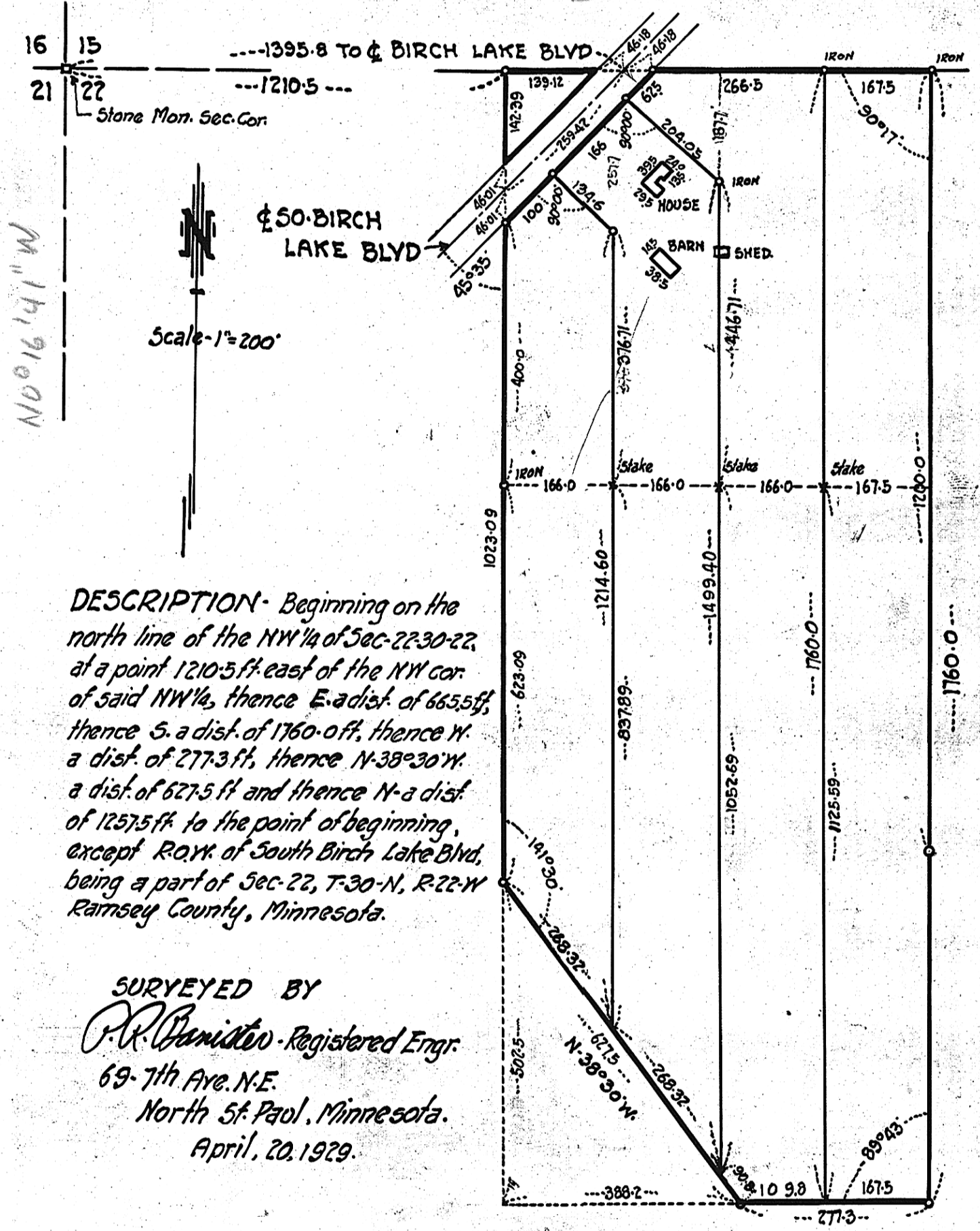


N 89° 54' 45" E



DESCRIPTION- Beginning on the north line of the NW 1/4 of Sec-22-30-22, at a point 1210.5 ft. east of the NW cor. of said NW 1/4, thence E. a dist. of 665.5 ft, thence S. a dist. of 1760.0 ft, thence W. a dist. of 277.3 ft, thence N-38°30' W a dist. of 627.5 ft and thence N-a dist. of 1257.5 ft. to the point of beginning, except R.O.W. of South Birch Lake Blvd, being a part of Sec-22, T-30-N, R-22-W Ramsey County, Minnesota.

SURVEYED BY
P.R. Panister - Registered Engr.
 69-7th Ave. N.E.
 North St. Paul, Minnesota.
 April, 20, 1929.