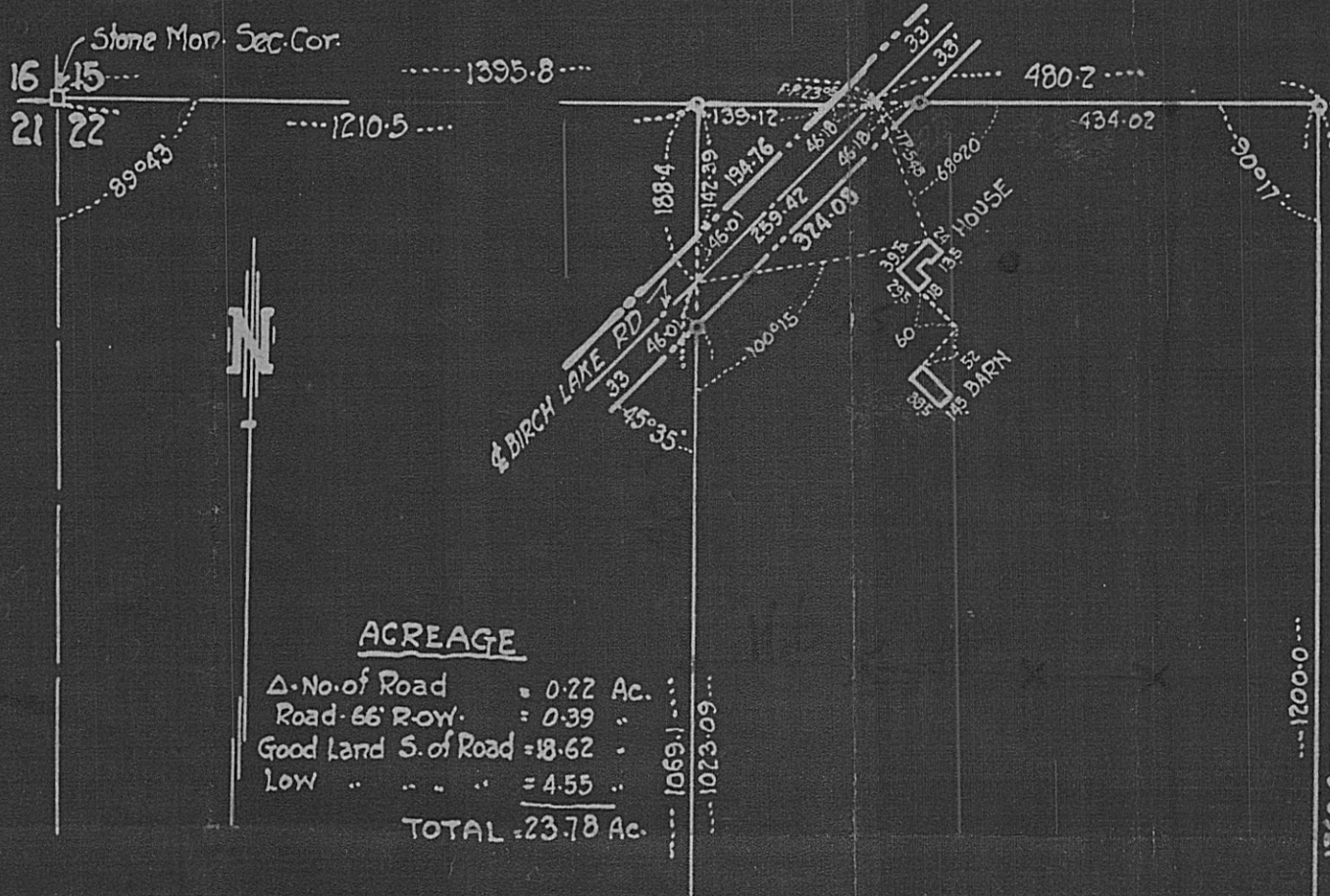


SEC. 22-30-22



**ACREAGE**

Δ. No. of Road	= 0.22 Ac.
Road - 66' R.O.W.	= 0.39 "
Good Land S. of Road	= 18.62 "
Low " " "	= 4.55 "
<b>TOTAL</b>	<b>= 23.78 Ac.</b>

DESCRIPTION

Beginning on the north line of the NW 1/4 of Sec-22-30-22, 1210.5' E. from the N.W. Cor., thence running S. a dist. of 665.5 ft. thence S. a dist. of 1760.0 ft., thence E. a dist. of 277.3 ft., thence N-38°30' W. a dist. of 627.5 ft. and thence N. a dist. of 1257.5 ft. to the point of beginning, being part of Sec-22, T-30-N, R-22-W, Ramsey County, Minn.

P. R. Barnister - Registered Professional Engr.  
 Office - 69-7th Ave - North St. Paul, Phone 407  
 Res - 139-18th Ave " " " 448  
 Feb. 5, 1929

Scale - 200' = 1"

