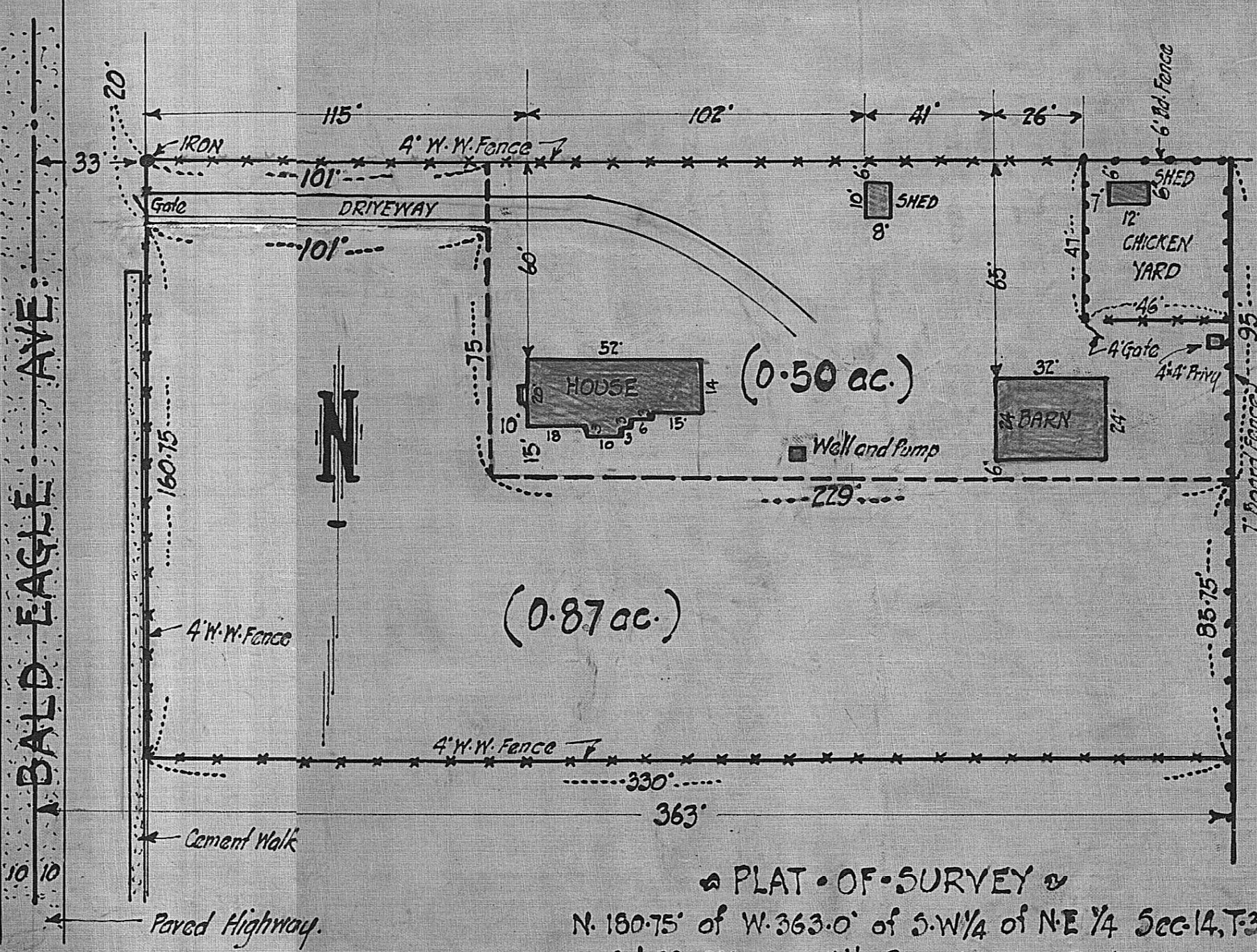


Rev 14-30-22



RAMSEY COUNTY FAIR GROUNDS

PLAT OF SURVEY

N. 180.75' of W. 363.0' of S.W. 1/4 of N.E. 1/4 Sec. 14, T. 30, R. 22

Oct. 29, 1924 White Bear, Minn Scale - 1" = 40'

P. R. BANISTER - Civil Engr.