

SW SESE

LAKE JOHANNNA.

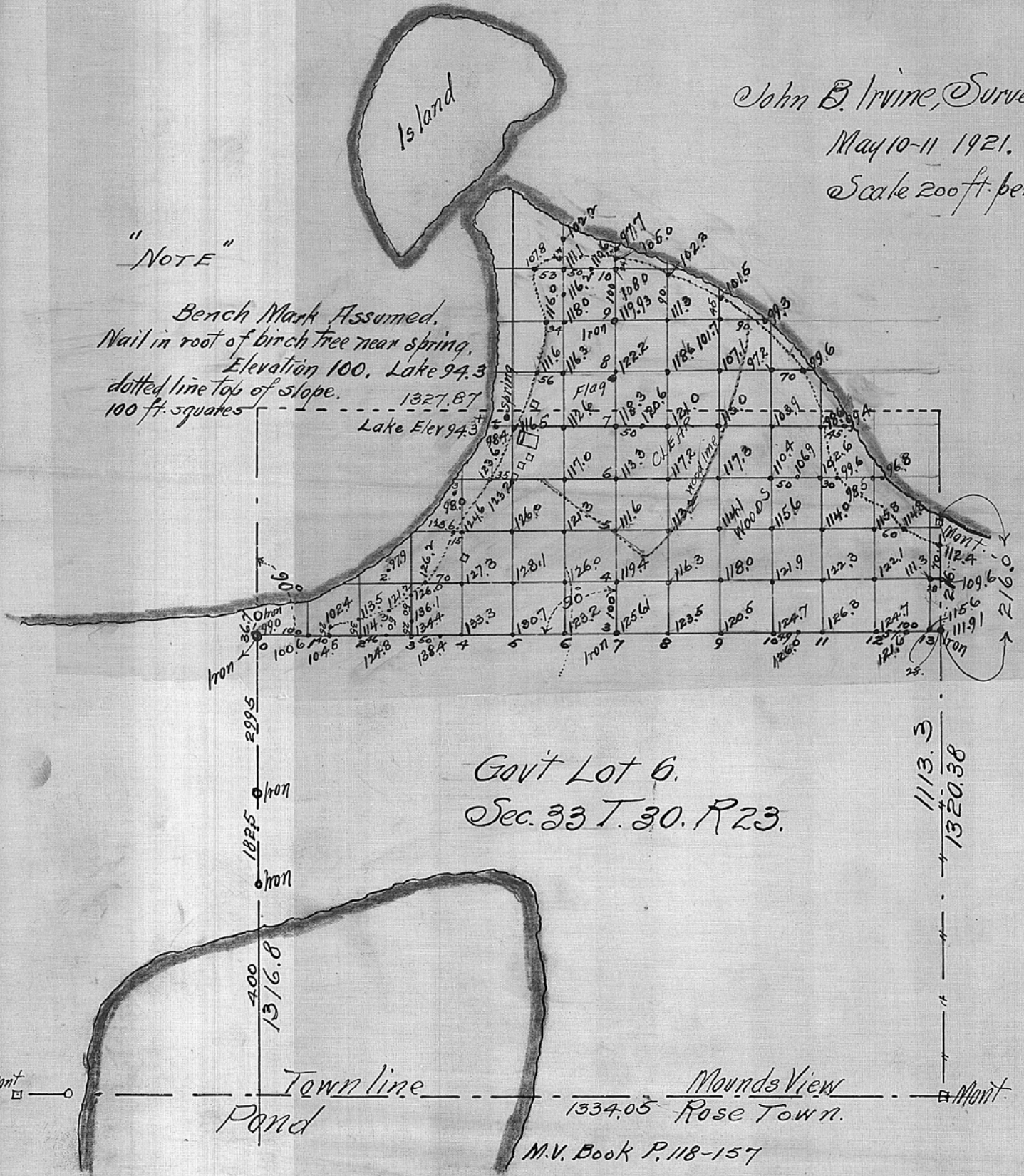
John B. Irvine, Surveyor.

May 10-11 1921.

Scale 200 ft. per inch.

"NOTE"

Bench Mark Assumed.
Nail in root of birch tree near spring.
Elevation 100. Lake 94.3
dotted line top of slope.
100 ft. squares



Gov't Lot 6.
Sec. 33 T. 30. R. 23.

Town line
Pond

Mounds View
Rose Town.

M.V. Book P. 118-157

1113.3
1320.38