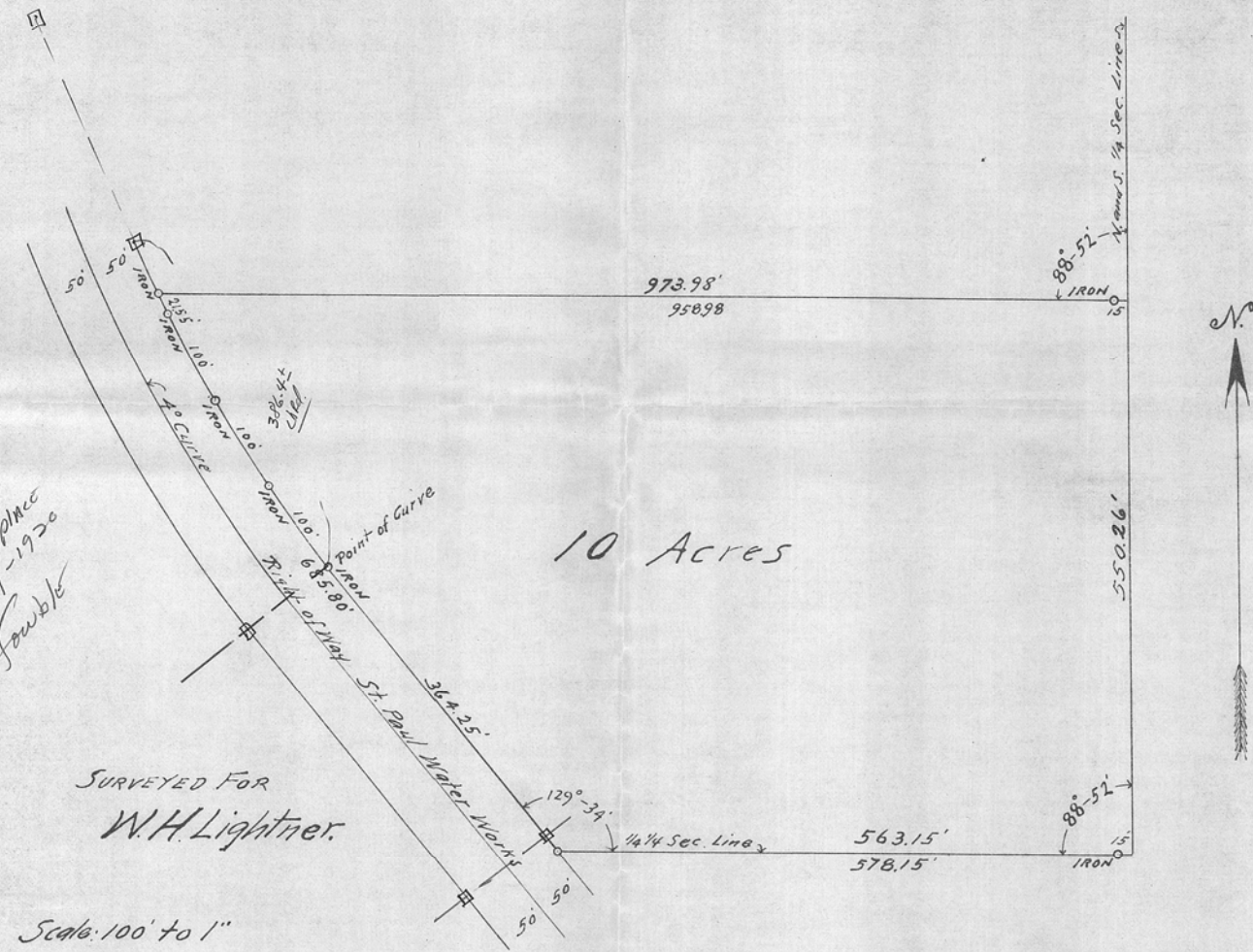


147/159

G.M. in place
S. May - 1920
Fowble



SURVEYED FOR
W.H. Lightner.

Scale: 100' to 1"

St. Paul, Minn.
May 10, 1920.
I certify this diagram correctly represents the
South ten (10) acres of that portion of N.E. 1/4 of
the N.W. 1/4 of Section 6, T. 29 N. R. 22 W. Ramsey County,
Minnesota, which lies East of the eastern line of
the Right of way of the St. Paul Water Works.
Surveyed by me in the month of May, 1920.
Milton Fowble
Surveyor.

Description by metes and bounds.

All of that part of the N.E. 1/4 of the N.W. 1/4
of Section 6, T. 29 N. R. 22 W. Ramsey County, Minnesota
described as follows: Beginning at the S.E. corner of the
N.E. 1/4 of the N.W. 1/4 of said Section 6, thence North on
the East line thereof 550.26 feet to a point, thence
West on a line parallel with the South line of said
N.E. 1/4 of N.W. 1/4 973.98 feet more or less to a point on the
Eastern line of the right of way of the St. Paul Water Works.
Thence Southeasting on said right of way line 685.80 feet
more or less, to the South line of said N.E. 1/4 of N.W. 1/4.
Thence East on said South line 578.15 feet more or less
to the place of beginning, Containing Ten (10) acres.

3140