

PART OF LOT 13,  
 BIDWELL'S ADD.,

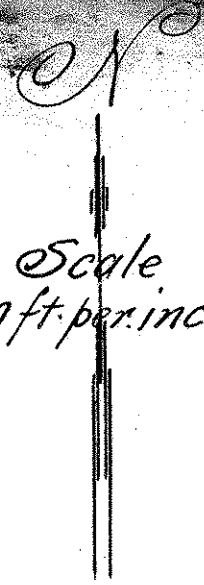
TO WEST ST. PAUL, PROPER.

John B. Irvine, Surveyor.

St Paul, Minn.

Oct. 24-1919.

Scale  
 40 ft. per inch.

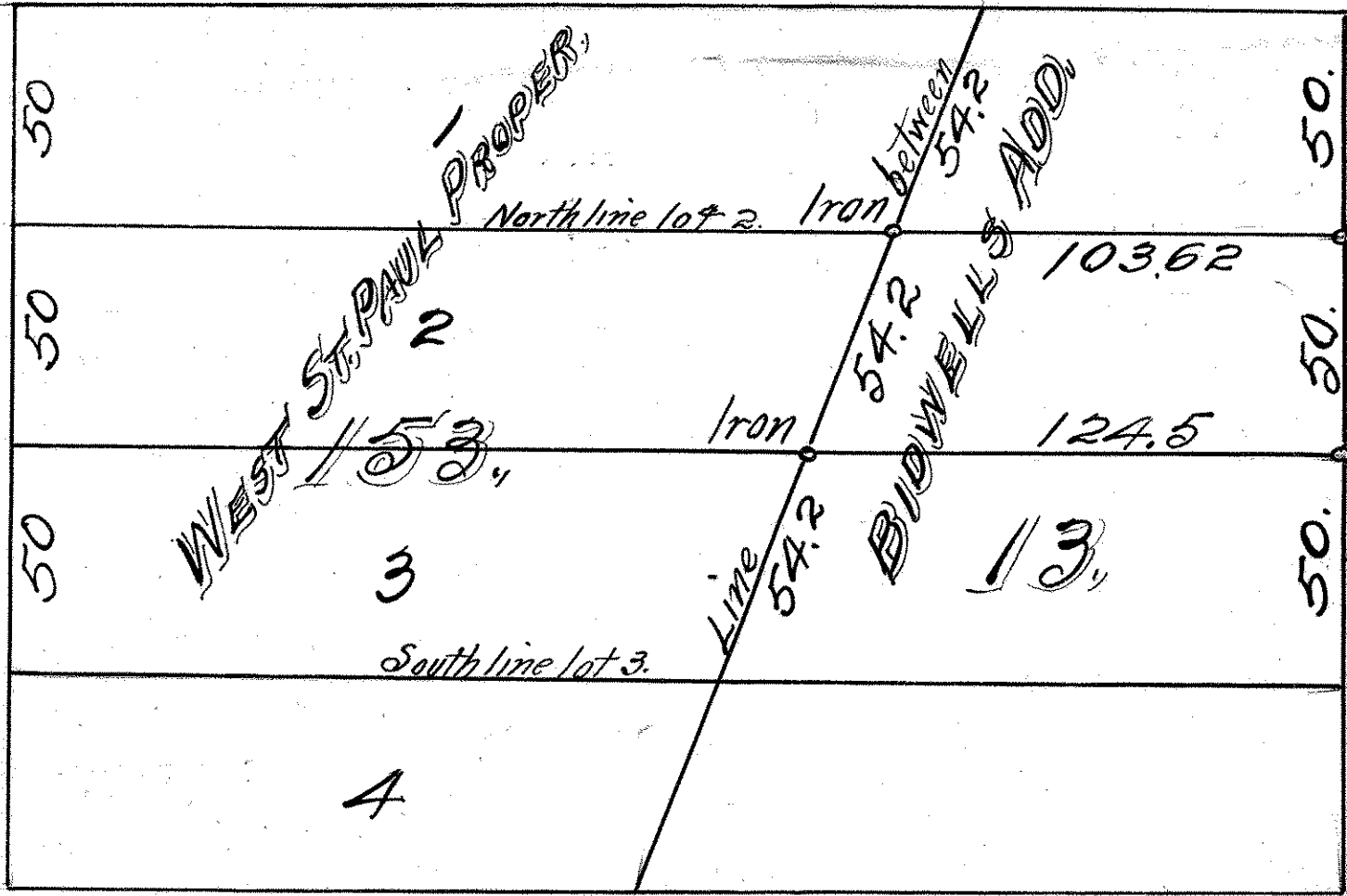


The north 50 ft. of that part of lot 13 Bidwells Add. to West St. Paul, Proper lying east of the easterly line of lots 2 & 3 Block 153 West St Paul Proper and between the north line of said lot 2 and the south line of said lot 3 Block 153 West St. Paul, Proper, produced easterly to the westerly line of <sup>south</sup> Robert St.

CURTICE

ST.

LIVINGSTON AVE., 80'



ST.

80'

SO. ROBERT ST.

BELVIDERE

ST.