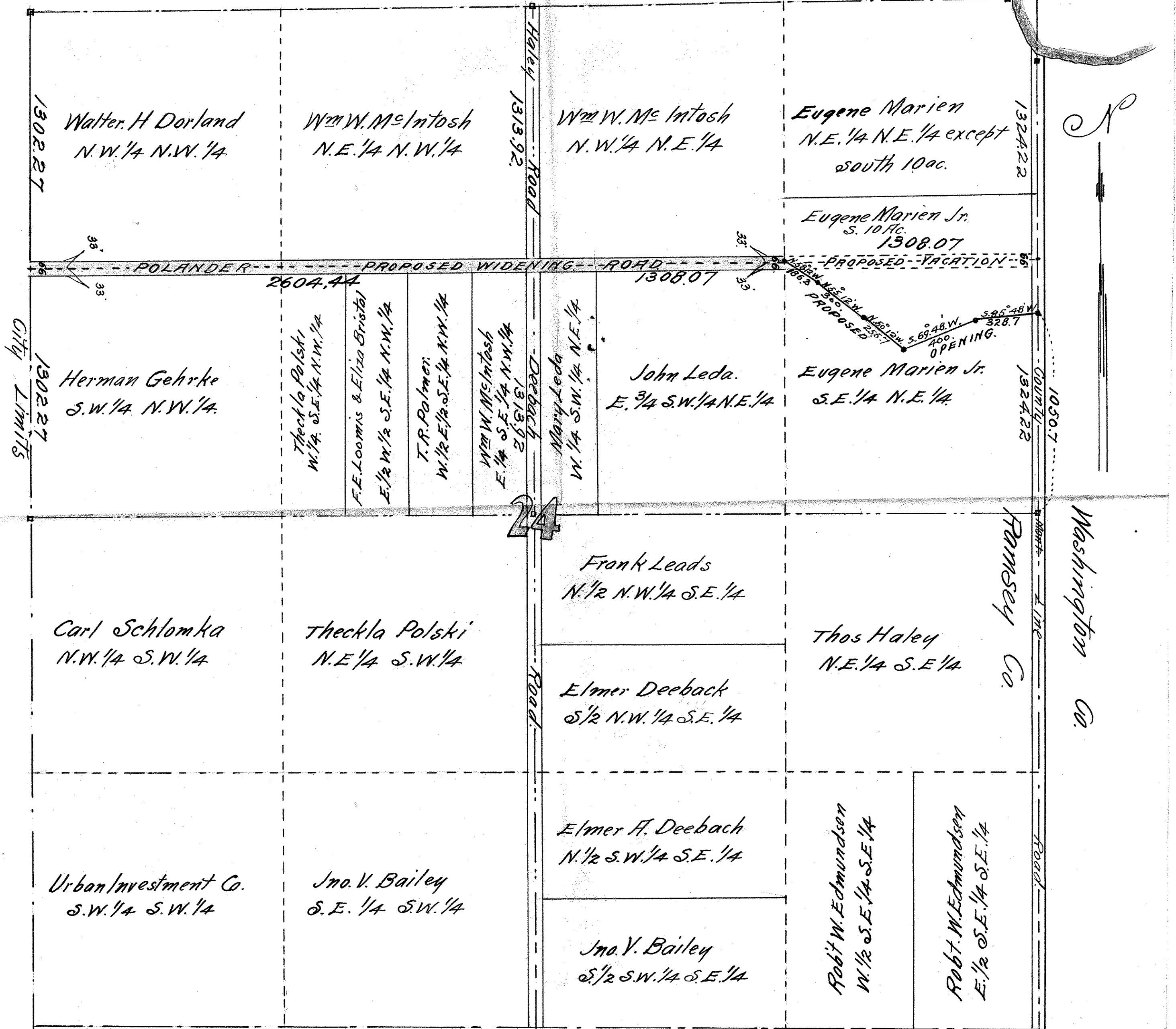


**POLANDER ROAD.**  
**SECTION, 24, T. 28, R. 22.**  
**WIDENING, VACATION & OPENING.**  
 scale 400 ft. per inch.

FISH LAKE



N.C. BK. P. 113.

JOHN B. IRVINE, SURVEYOR.  
 408. GLOBE BLD'G.  
 ST. PAUL, MINN.  
 APRIL 14 1914