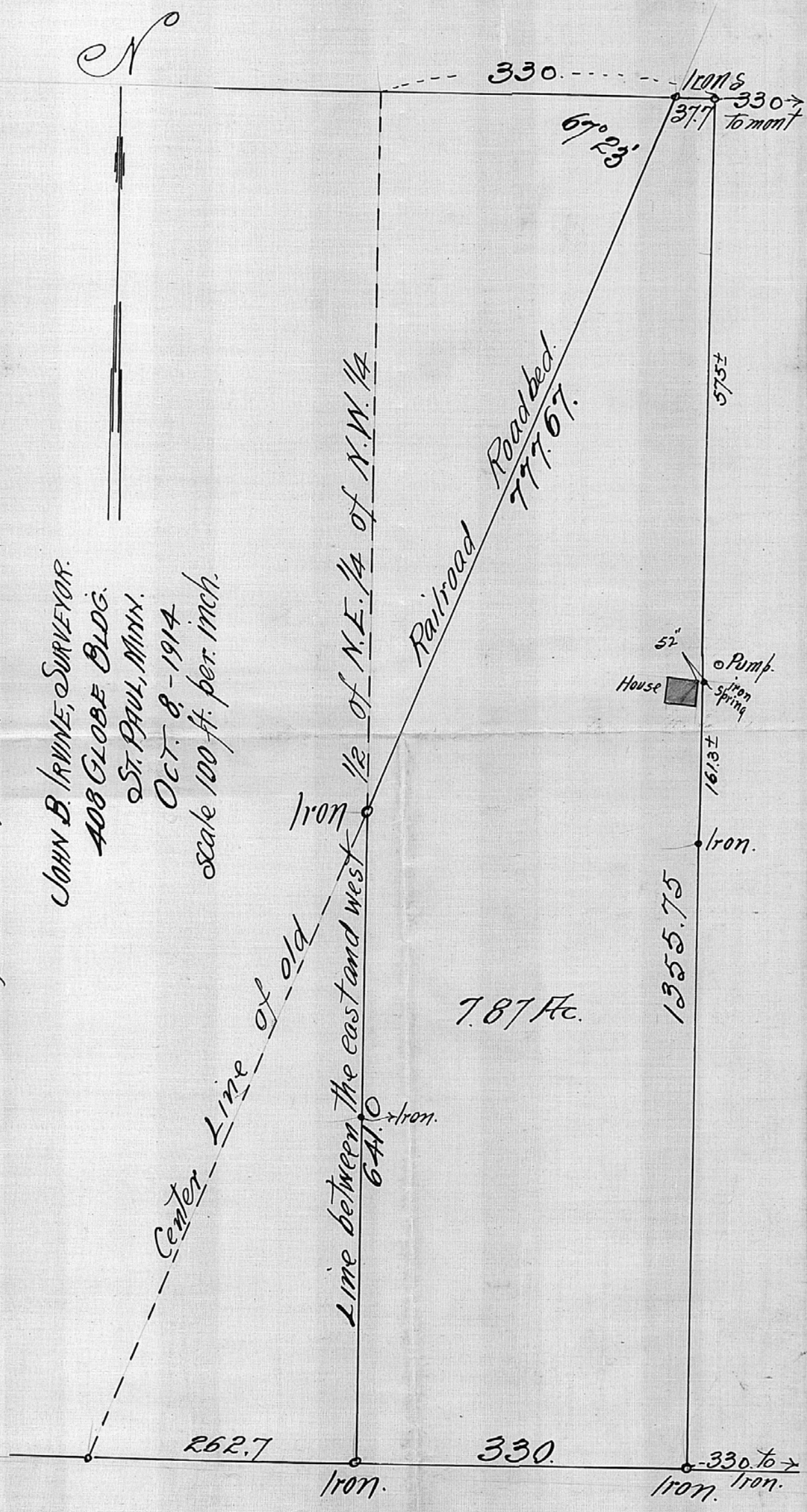


WEST 1/2 OF EAST 1/2 OF N.E. 1/4 OF N.W. 1/4.
 SECTION 12 TOWN 30 RANGE 22.
 Lying on east side of certain old roadbed
 running diagonally through said N.E. 1/4

JOHN B. IRVINE, SURVEYOR.
 408 GLOBE BLDG.
 ST. PAUL, MINN.
 OCT. 8 - 1914
 scale 100 ft. per inch.



7.87 Ac.

330. to \rightarrow
 Iron.

161.8 \pm
 Iron.

1355.75

52"
 House
 Pump
 Iron Spring

Railroad
 Roadbed
 777.67.

1/2 of N.E. 1/4 of N.W. 1/4

Iron

Iron.

330.

262.7

330.

67° 23'

1201.8
 330 \rightarrow
 to mont

575 \pm

