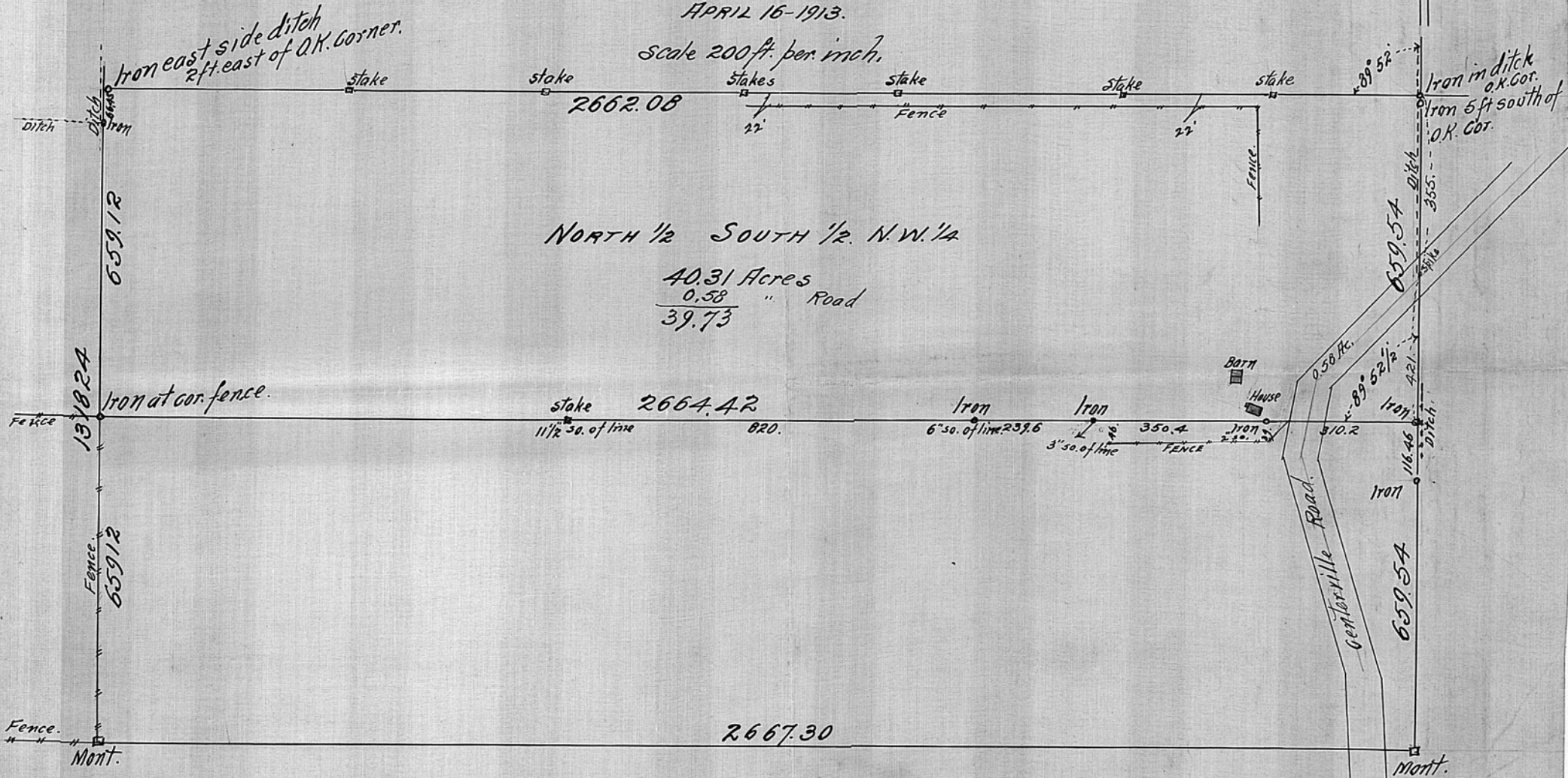


NORTH 1/2 SOUTH 1/2 NORTH WEST 1/4  
 SECTION 33, TOWN 30, RANGE 22,

JOHN B. IRVINE, SURVEYOR.  
 408 GLOBE BLDG.  
 ST. PAUL, MINN.  
 APRIL 16-1913.

scale 200 ft. per inch.



NORTH 1/2 SOUTH 1/2 N.W. 1/4

40.31 Acres  
 0.58 " Road  
 39.73

Iron east side ditch  
 2ft. east of O.K. Corner.

Iron in ditch  
 O.K. Cor.  
 Iron 5 ft south of  
 O.K. Cor.

Iron at cor. fence.

Barn  
 House

Gen. Torville Road.

2667.30

Fence.  
 Mont.

Mont.