

S. E. 1/4, N. E. 1/4, SEC. 33, T. 30, R. 22,

N

JOHN B. IRVINE, SURVEYOR.

408 GLOBE BLDG.

ST. PAUL, MINN.

APRIL 16-1913

scale 200ft. per. inch.

Iron

557.15

spike

1327.08

Iron

776.0

S. E. 1/4, N. E. 1/4,

40.18 ACRES.

1319.90.

Iron

1319.48

543.48

Mont.

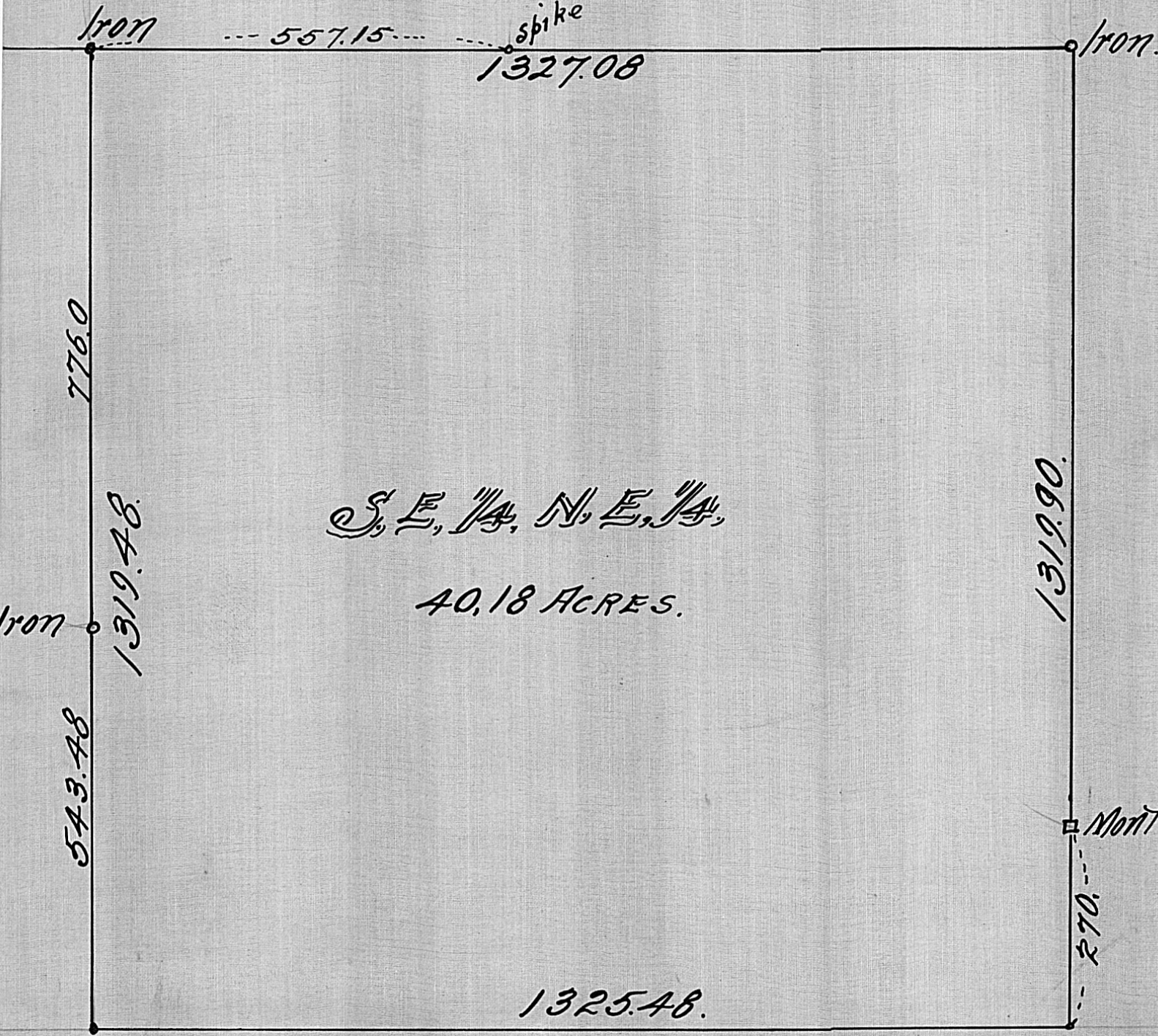
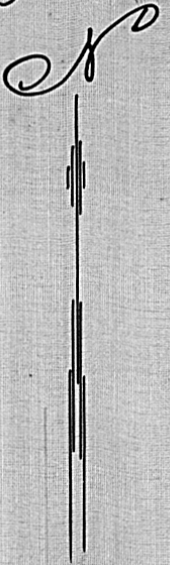
270

1325.48.

S. E. 1/4, N. E. 1/4, SEC. 33, T. 30, R. 22,

JOHN B. IRVINE. SURVEYOR.
408 GLOBE BLDG.
ST. PAUL, MINN.
APRIL 16-1913

scale 200 ft. per. inch.



S. E. 1/4, N. E. 1/4,

40.18 ACRES.

1325.48.