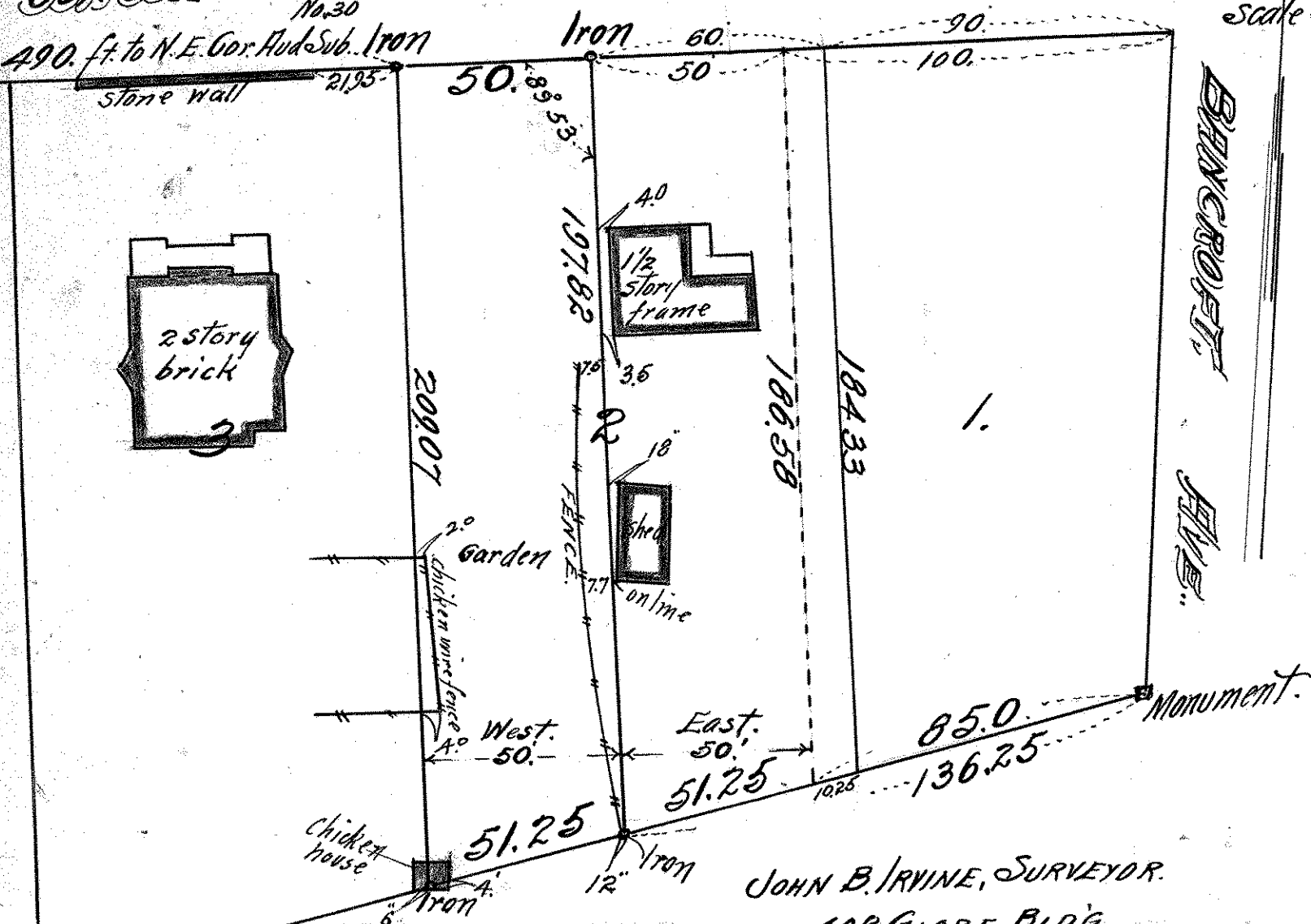


THE WEST 50 ft. of
 LOT 2 BLOCK "A"
 BELL'S ADDITION.

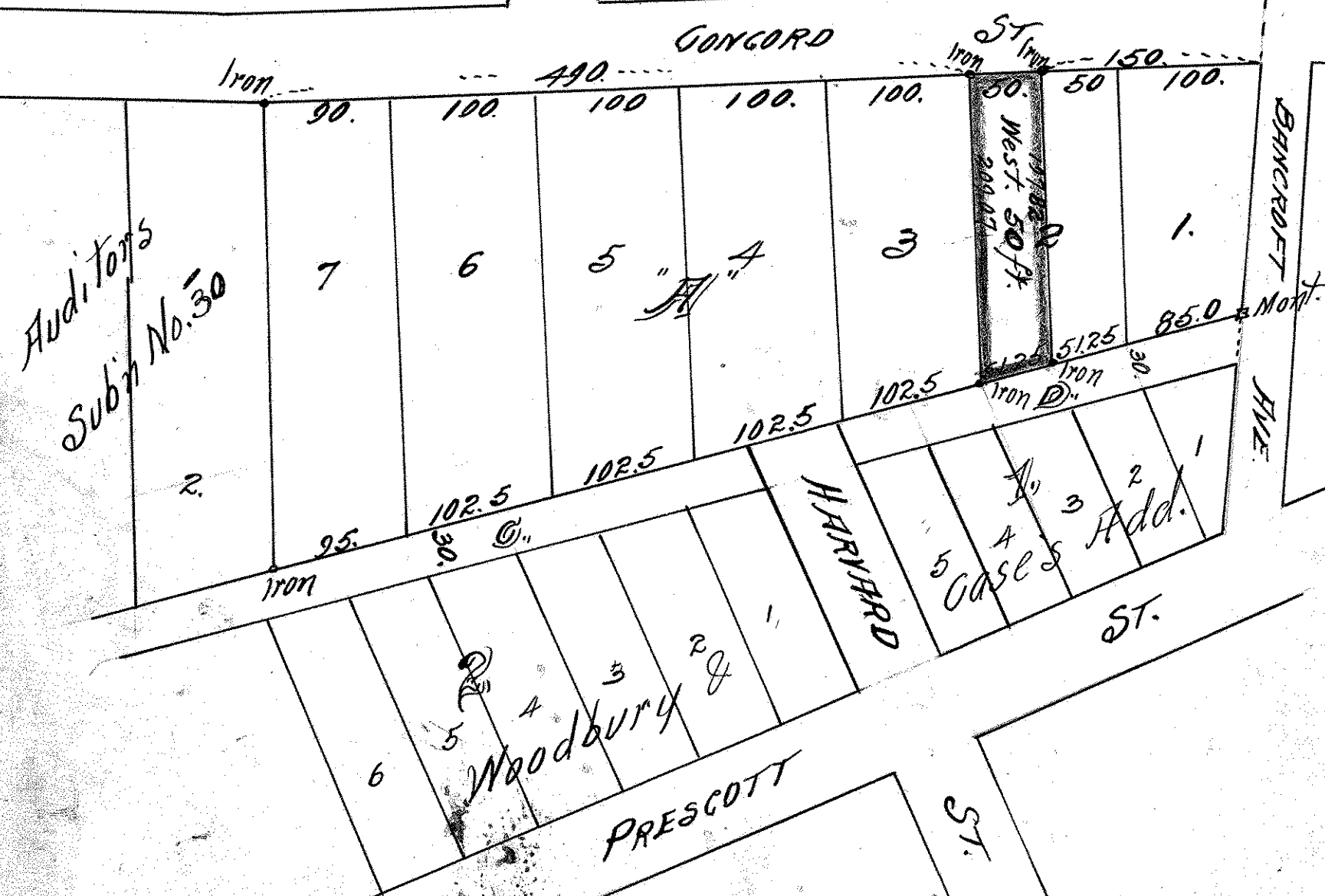
TO
 WEST ST. PAUL ST.

CONCORD No. 30
 490. ft. to N.E. Cor. Aud. Sub. Iron

Scale 40' = 1"



JOHN B. IRVINE, SURVEYOR.
 408 GLOBE BLDG.
 ST. PAUL, MINN.
 SEPT. 30-1912
 Scale 100 ft. per inch.



Auditors
 Sub'n No. 30

5 Cases
 Add.

Woodbury

PRESCOTT ST.

ST.