

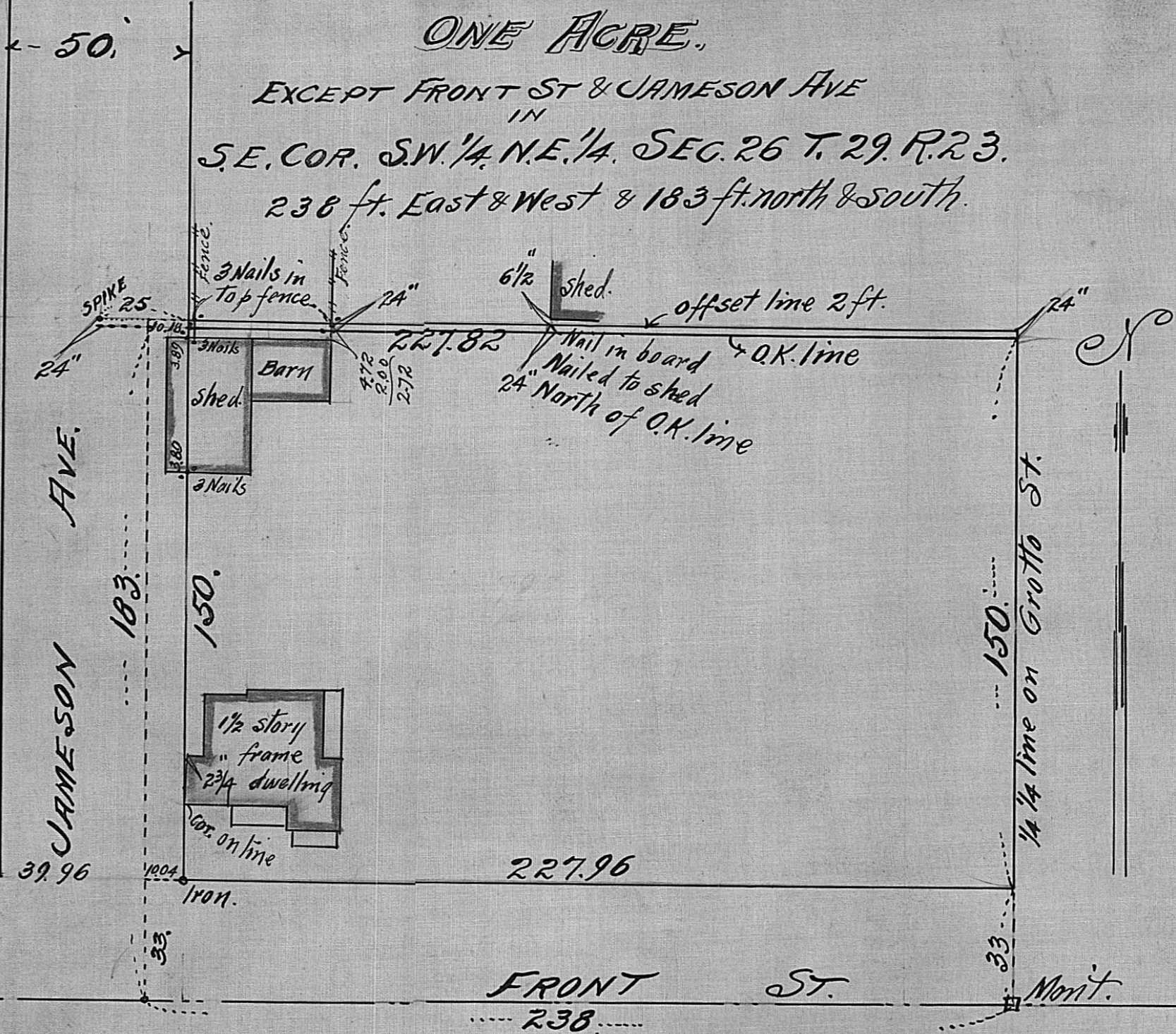
ONE ACRE.

EXCEPT FRONT ST & JAMESON AVE

IN

S.E. COR. S.W. 1/4 N.E. 1/4, SEC. 26 T. 29 R. 23.

238 ft. East & West & 183 ft. north & south.



SCALE 40 ft. per inch.

JOHN B. IRVINE, SURVEYOR.
ST. PAUL, MINN.
MARCH 12-1912