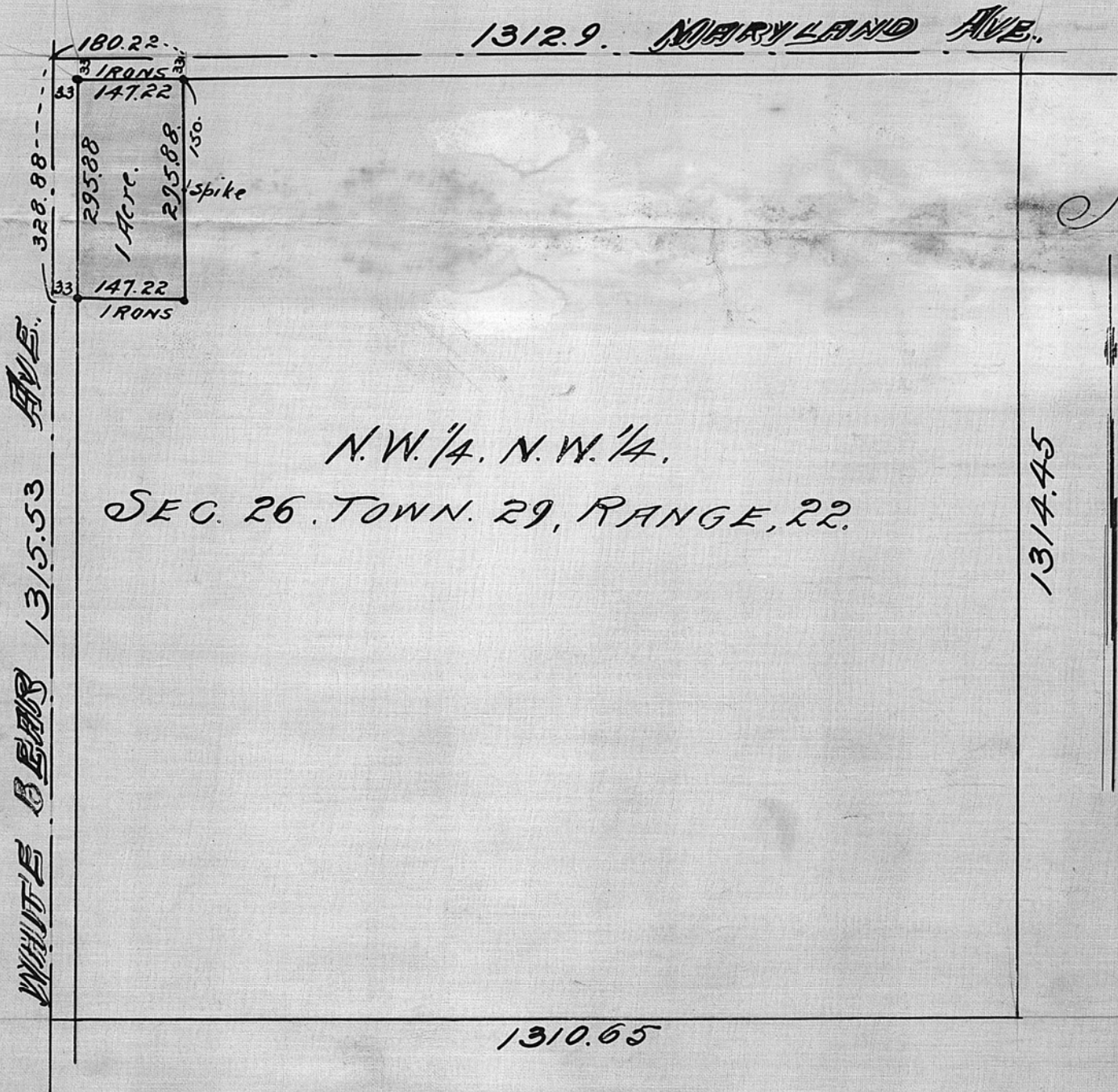


1 ACRE.

THE EAST 147.22 ft of the WEST 180.22 ft.  
OF THE SOUTH 295.88 ft of the NORTH  
328.88 ft of the N.W. 1/4 of the N.W. 1/4 OF  
SEC. 26, TOWN 29, RANGE 22.

JOHN B. IRVINE, SURVEYOR.  
408 GLOBE BLDG.  
ST. PAUL MINN.  
AUG. 12-1912.

Scale 200 ft. per inch.



N.W. 1/4. N.W. 1/4.  
SEC. 26. TOWN. 29, RANGE, 22.