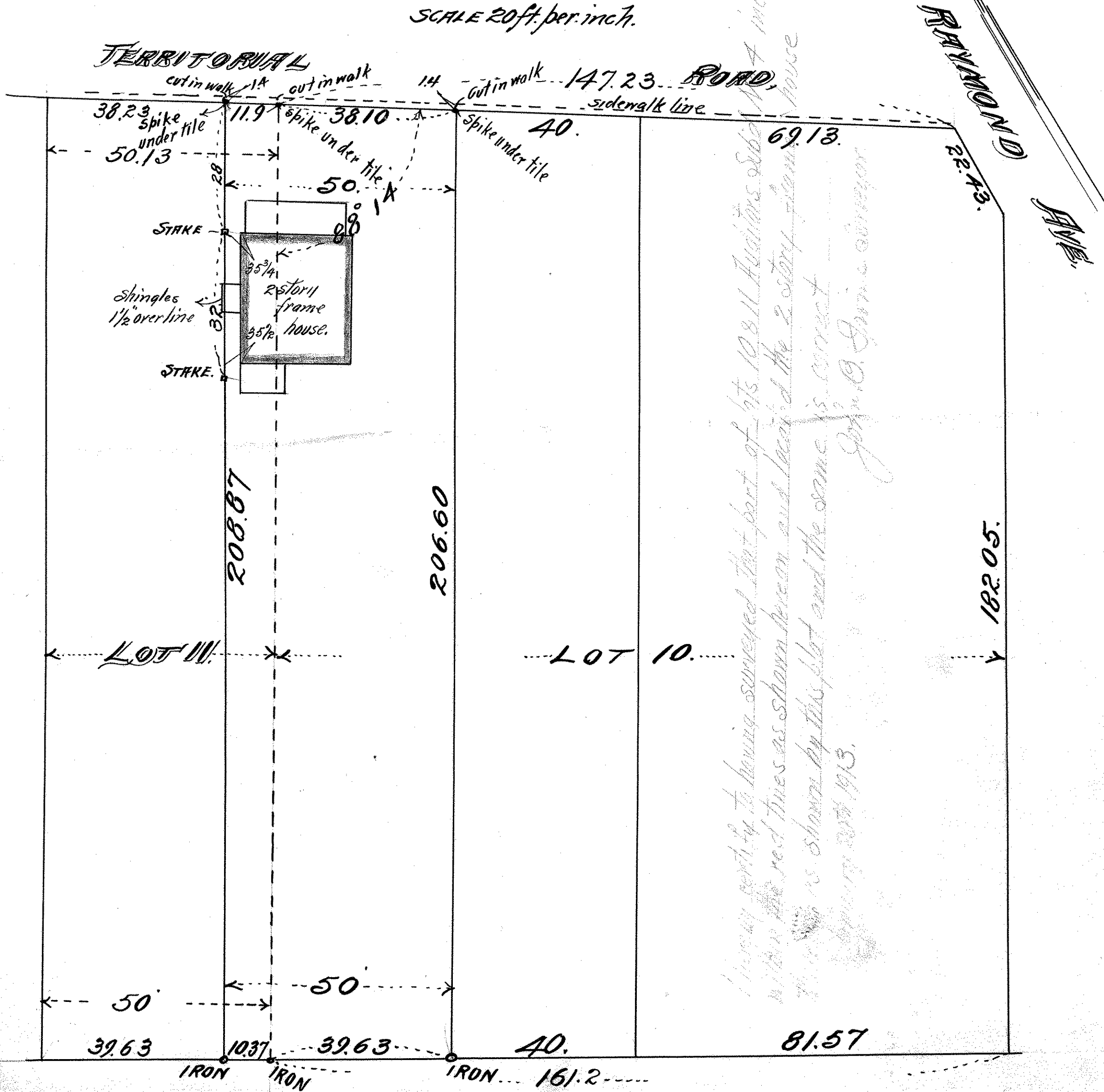


PART OF LOTS 10 & 11.
 AUDITOR'S SUBDIVISION No. 4.

JOHN B. IRVINE, SURVEYOR.
 408 GLOBE BLDG.
 ST. PAUL, MINN.
 OCT 6 - 1911
 SCALE 20ft. per inch.



Having party to being surveyed that part of lots 10 & 11 Auditor's Subd. No. 4 included within the red lines as shown herein and located the 2 story frame house thereon as shown by this plat and the same is correct. Witness my hand and seal this 6th day of October 1911.
 John B. Irvine, Surveyor