

EAST 132 ft. of WEST 552.3 ft. of SOUTH 17814 ft. EXCEPT LANGFORD AVE.
 S.W. 1/4 OF S.E. 1/4 OF S.E. 1/4 SW. 1/4 SEC. 22, T. 29, R. 23.

JOHN B. IRVINE, SURVEYOR.

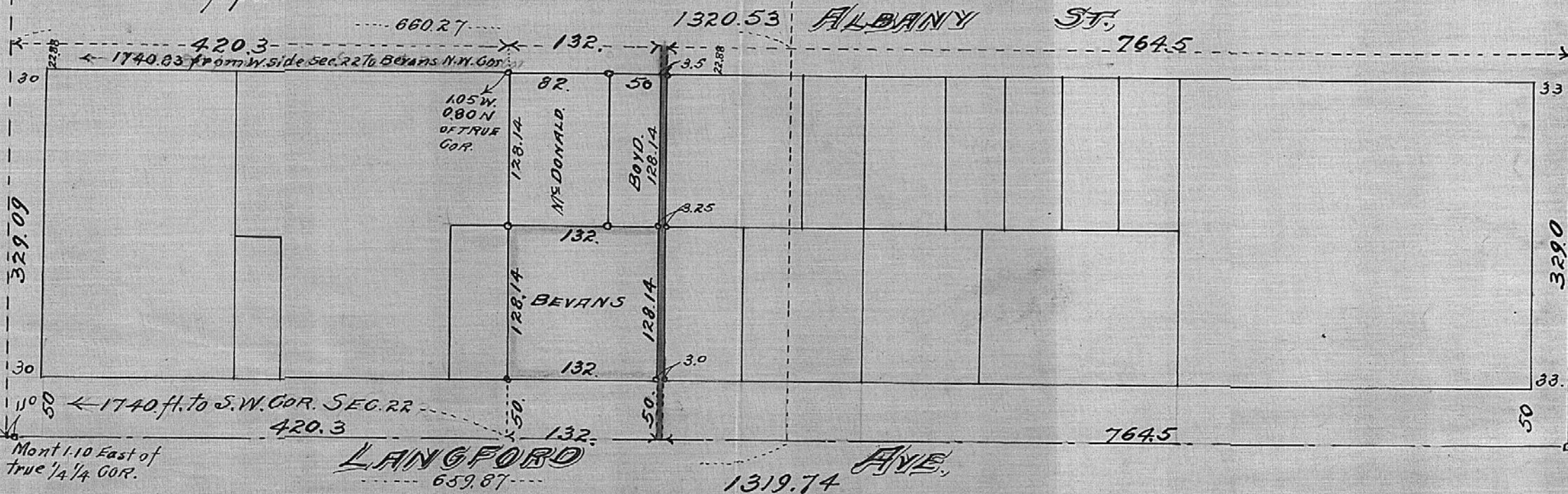
408 GLOBE BLDG.

ST. PAUL, MINN

SEPT 2-1911

o=IRONS

SCALE 100 ft. per inch.



S.W. COR.
 S.W. 1/4 S.E. 1/4
 S.E. 1/4 S.W. 1/4
 SEC. 22-29-23
 Mont 1.10 East of
 true 1/4 1/4 COR.

LANGFORD AVE.

ALBANY ST.

MONT.