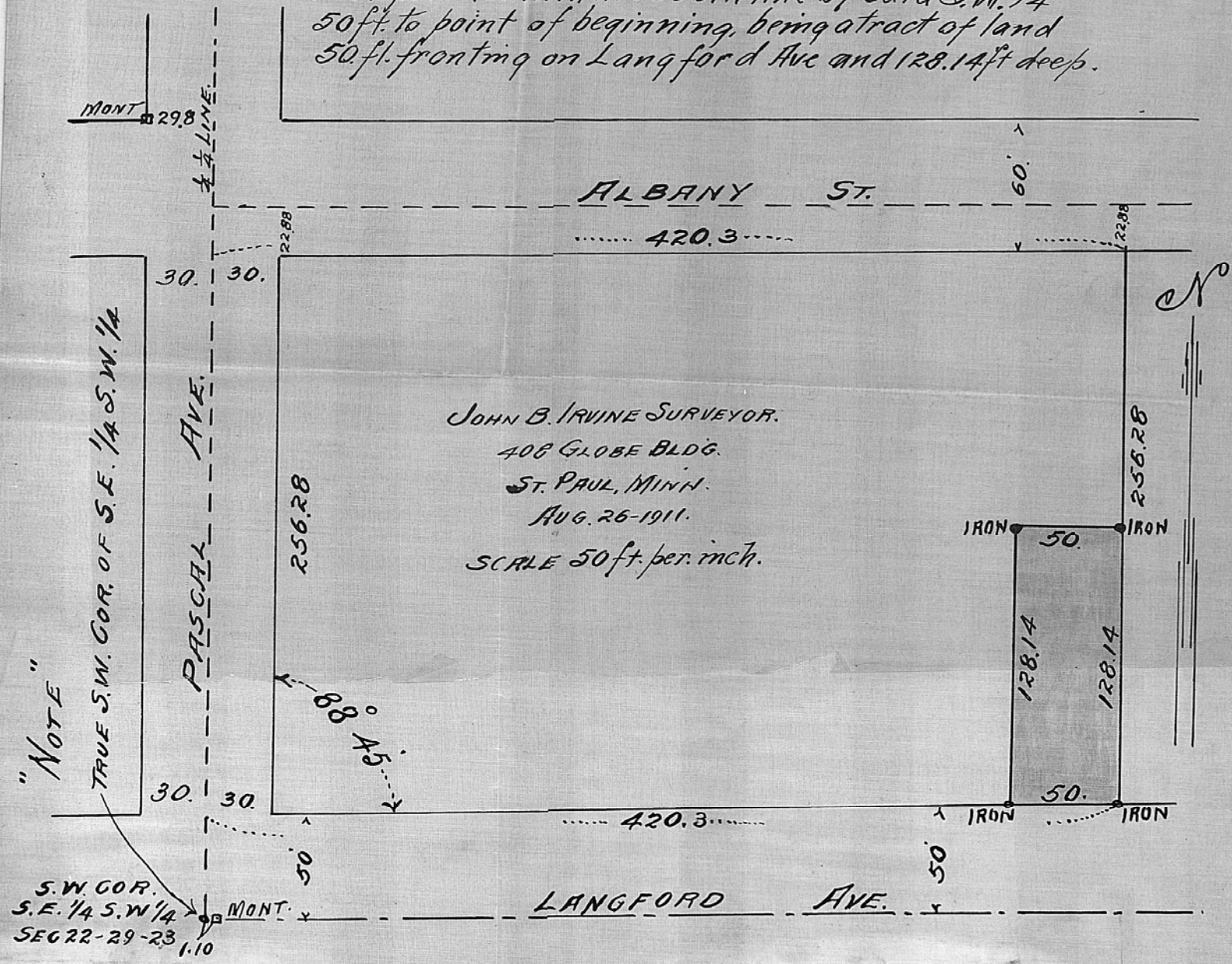


DESCRIPTION:

Beginning at a point on the North line of Langford Ave. 50 ft. north and 370<sup>3</sup>/<sub>10</sub> ft east of the S.W. Cor. of S.E. 1/4 of S.W. 1/4 of Section 22, Town 29, Range 23, thence north parallel with the west line of said S.W. 1/4 128.14 ft. thence east parallel with the south line of said S.W. 1/4, 50 ft. thence south parallel with the west line of said S.W. 1/4 128.14 ft. to the north line of Langford Ave, thence west parallel with the south line of said S.W. 1/4 50 ft. to point of beginning, being a tract of land 50 ft. fronting on Langford Ave and 128.14 ft deep.



JOHN B. IRVINE SURVEYOR.  
 408 GLOBE BLDG.  
 ST. PAUL, MINN.  
 AUG. 26-1911.  
 SCALE 50 ft. per inch.

"NOTE"

TRUE S.W. COR. OF S.E. 1/4 S.W. 1/4

S.W. COR.  
 S.E. 1/4 S.W. 1/4  
 SEC 22-29-23  
 1.10