

WHEELOCK PARKWAY

SHEET 1 OF 4

SCALE 1" TO 200'

Recorded Apr. 28 1909 - Book 3 Page 13

This is to certify that this plot of lands and grounds has been designated and has been caused to be surveyed and platted by the Board of Park Commissioners of the City of St. Paul for the purposes of a public parkway for the use of said city to be called WHEELOCK PARKWAY by and under resolutions of said board adopted Jan. 6, 1908, and comprising the following tracts of land situated in the City of St. Paul, to wit: A strip of land 120 feet wide and full lots extending beyond said strip where noted extending from the intersection of Maryland St. and Lake Como Boulevard on the West to the intersection of Arcade St. and Lake Como & Phalen Ave. on the East across certain tracts of land to be hereinafter described. The center line of said 120 strip is described as follows: Beginning at the S.W. corner of lot 8, block 10, Como Heights, and thence N.E. by on a 6°25' curve to the right, 23°15', to Sta. 3+23.4, a tangent to said curve at its beginning making an angle of 60°39' with the N line of Maryland St.; thence on a tangent to Sta. 11+65.5; thence on a 5° curve to the left, 12°44', to Sta. 14+20.2; thence on a tangent to Sta. 15+13.8; thence on an 8° curve to the right, 20°21', to Sta. 17+67.4; thence on a tangent to Sta. 18+15.9; thence on a 6° curve to the right, 25°09', to Sta. 22+34.4; thence on a tangent to Sta. 27+72.8, to the East line of Sec. 23, T. 29, R. 23, at the intersection with the 1/4 line on South St., and making an angle to the N.W. of 93°05' with said section line; thence by an angle to the right of 2°13' to Sta. 41+31.5; thence by a 10° curve to the left, 70°49', to Sta. 48+39.6; thence on a tangent to Sta. 50+91.9; thence on a 10° curve to the right, 32°26', to Sta. 54+15.9; thence on a tangent to Sta. 57+83.1; thence on a 10° curve to the left, 8°32', to Sta. 58+68.5; thence on a tangent to Sta. 60+64.1, to the center of Sec. 24, T. 29, R. 23, at the intersection of Western Ave. and Lake Como & Phalen Ave.; thence on the same tangent produced to Sta. 61+85.0; thence on a 5° curve to the left, 26°32', to Sta. 61+15.9; thence on a tangent to Sta. 74+34.2; thence on an 8° curve to the left, 37°32', to Sta. 79+3.0; thence on a tangent to Sta. 82+36.6; thence on a curve to the right, with a radius of 125' and central angle of 146°41', to Sta. 85+54.6; thence on a tangent to Sta. 87+48.6; thence on a curve to the right, with a radius of 250' and a central angle of 31°46', to Sta. 88+87.1; thence on a tangent to Sta. 90+55.4; thence on a curve to the right, with a radius of 250' and a central angle of 24°11', to Sta. 91+60.9; thence on a tangent to Sta. 92+39.1; thence on a curve to the left, with radius of 125' and central angle of 120°38', to 95+0.6; thence on a tangent to Sta. 102+89.8; thence on an 8° curve to the right, 28°47', to Sta. 106+49.6; thence on a tangent to Sta. 111+40.5, to the E. line of Sec. 24, T. 29, R. 23, on Rice St. 6941 S. of the N.E. corner of said section, and making an angle of 90°18' to the N.W. with said section line; thence on the same tangent produced to Sta. 125+44.6; thence on a 3°19' curve to the left, 25°39', to Sta. 134+30.6; thence on a tangent to Sta. 134+41.8; thence on a 14°30' curve to the right, 27°01', to Sta. 134+28.8, to the 1/4 sec. line on Cortland St., 404 S. of the 1/4 post on the N. line of Sec. 19, T. 29, R. 23, and making an angle to Sta. 162+37.1, to the E. line of said Sec. 19 on M'Menamy St., 421 E. S. of the N.E. corner of said section, and making an angle to the N.W. of 88°35' with said section line; thence on the same tangent produced to Sta. 164+43.3; thence on a 6°20' curve to the right, 54°20', to Sta. 173+1.5; thence on a tangent to Sta. 175+21.5; thence on a 3°35' curve to the left,

24°30' to Sta. 182+5.7; thence on a tangent to Sta. 189+48.2; thence on a 5° curve to the left, 13°22', to Sta. 192+15.5; thence on a tangent to Sta. 194+28.7, to the 1/4 section line on Edgerton St. 6073 N. of the 1/4 post on S. side of Sec. 20, T. 29, R. 22, and making an angle of 107°33' to the S.W. with said 1/4 line; thence on the same tangent produced to Sta. 196+56.9; thence on an 8° curve to the right, 16°11', to Sta. 198+59.2; thence on a tangent to Sta. 198+93.9; thence on an 8° curve to the left, 34°12', to Sta. 203+21.4; thence on a tangent to Sta. 206+2.8; thence on an 8° curve to the right, 23°38', to Sta. 208+98.2; thence on a tangent to Sta. 213+54.9; thence on an 8° curve to the left, 23°58', to Sta. 216+52.3; thence on a tangent to Sta. 221+57.6, to the 1/4 post on E. line of Sec. 20, T. 29, R. 22, at the intersection of Arcade St. and Lake Como & Phalen Ave. The tracts of land crossed by said 120 strip are as follows: In Como Heights Addition.

Lots 8, 7, 6, (all full lots), 5, 4, 3, 2, 21 (full lot), 20 and 19, Block 10.
 " 8, 7, 6 (full lot), 5 (full lot), 4 and 3, Block 8.
 " 26, 27, 28 (full lot), 29, 30, and 2, Block 9.
 " 13 (full lot), 12, 11, 10 and 9, Block 1.

In Ryan's Sub. of Block 6, Rogers & Hendricks Acre Lots.
 Lots 19, 20, 21, 22 (full lot), 23 (full lot), 24, 25, 26, 27, 28 (full lot), 29, 30 (full lot), 31, 2 (full lot), and 1, Block 1.
 " 26, 27, 28 (full lot), 29, 30 (full lot), 31, 2 (full lot), and 1, Block 1.
 In Coleman's Sub. of Lots 8, 9, 10, Block 5, Rogers & Hendricks Acre Lots.

Lots 17, 18, 2 and 1 (full lot).
 In Coleman's Sub. of Lots 182, Block 5, Rogers & Hendricks Acre Lots.

Lots 1 and 12 (full lots).
 In Clayton's First Addition.
 Lots 14, 15, 16, 17, 18, 19, 20, 21, 22, 23, 24 and 3 (full lot).

In Taylor's Addition.
 Lots 18 and 19 (full lots).
 In Mayhams Addition.

Lots 4, 6 and 1.
 In Bernardine Addition.
 Lots 28 and 1.

In Cottage Homes.
 Lots 34, 32, 31, 30, 29, 28, 27, 26, 25, 24, 23, 22, 21, 20, 19, 18, 17, 16, 15, 14, 13, 12, 11, 10, 9, 8, 7, 6, 5, 4, 3, 2, 1, and all of 16 S. of 120 strip, 17, 18, 19, 20, 21, 22, 23, 24, 25, 26, 27, 28, 29, 30, 31, 32, 33, 34, 35, 36, 37, 38, 39, 40, 41, 42, 43, 44, 45, 46, 47, 48, 49, 50, 51, 52, 53, 54, 55, 56, 57, 58, 59, 60, 61, 62, 63, 64, 65, 66, 67, 68, 69, 70, 71, 72, 73, 74, 75, 76, 77, 78, 79, 80, 81, 82, 83, 84, 85, 86, 87, 88, 89, 90, 91, 92, 93, 94, 95, 96, 97, 98, 99, 100, 101, 102, 103, 104, 105, 106, 107, 108, 109, 110, 111, 112, 113, 114, 115, 116, 117, 118, 119, 120, 121, 122, 123, 124, 125, 126, 127, 128, 129, 130, 131, 132, 133, 134, 135, 136, 137, 138, 139, 140, 141, 142, 143, 144, 145, 146, 147, 148, 149, 150, 151, 152, 153, 154, 155, 156, 157, 158, 159, 160, 161, 162, 163, 164, 165, 166, 167, 168, 169, 170, 171, 172, 173, 174, 175, 176, 177, 178, 179, 180, 181, 182, 183, 184, 185, 186, 187, 188, 189, 190, 191, 192, 193, 194, 195, 196, 197, 198, 199, 200, 201, 202, 203, 204, 205, 206, 207, 208, 209, 210, 211, 212, 213, 214, 215, 216, 217, 218, 219, 220, 221, 222, 223, 224, 225, 226, 227, 228, 229, 230, 231, 232, 233, 234, 235, 236, 237, 238, 239, 240, 241, 242, 243, 244, 245, 246, 247, 248, 249, 250, 251, 252, 253, 254, 255, 256, 257, 258, 259, 260, 261, 262, 263, 264, 265, 266, 267, 268, 269, 270, 271, 272, 273, 274, 275, 276, 277, 278, 279, 280, 281, 282, 283, 284, 285, 286, 287, 288, 289, 290, 291, 292, 293, 294, 295, 296, 297, 298, 299, 300, 301, 302, 303, 304, 305, 306, 307, 308, 309, 310, 311, 312, 313, 314, 315, 316, 317, 318, 319, 320, 321, 322, 323, 324, 325, 326, 327, 328, 329, 330, 331, 332, 333, 334, 335, 336, 337, 338, 339, 340, 341, 342, 343, 344, 345, 346, 347, 348, 349, 350, 351, 352, 353, 354, 355, 356, 357, 358, 359, 360, 361, 362, 363, 364, 365, 366, 367, 368, 369, 370, 371, 372, 373, 374, 375, 376, 377, 378, 379, 380, 381, 382, 383, 384, 385, 386, 387, 388, 389, 390, 391, 392, 393, 394, 395, 396, 397, 398, 399, 400, 401, 402, 403, 404, 405, 406, 407, 408, 409, 410, 411, 412, 413, 414, 415, 416, 417, 418, 419, 420, 421, 422, 423, 424, 425, 426, 427, 428, 429, 430, 431, 432, 433, 434, 435, 436, 437, 438, 439, 440, 441, 442, 443, 444, 445, 446, 447, 448, 449, 450, 451, 452, 453, 454, 455, 456, 457, 458, 459, 460, 461, 462, 463, 464, 465, 466, 467, 468, 469, 470, 471, 472, 473, 474, 475, 476, 477, 478, 479, 480, 481, 482, 483, 484, 485, 486, 487, 488, 489, 490, 491, 492, 493, 494, 495, 496, 497, 498, 499, 500, 501, 502, 503, 504, 505, 506, 507, 508, 509, 510, 511, 512, 513, 514, 515, 516, 517, 518, 519, 520, 521, 522, 523, 524, 525, 526, 527, 528, 529, 530, 531, 532, 533, 534, 535, 536, 537, 538, 539, 540, 541, 542, 543, 544, 545, 546, 547, 548, 549, 550, 551, 552, 553, 554, 555, 556, 557, 558, 559, 560, 561, 562, 563, 564, 565, 566, 567, 568, 569, 570, 571, 572, 573, 574, 575, 576, 577, 578, 579, 580, 581, 582, 583, 584, 585, 586, 587, 588, 589, 590, 591, 592, 593, 594, 595, 596, 597, 598, 599, 600, 601, 602, 603, 604, 605, 606, 607, 608, 609, 610, 611, 612, 613, 614, 615, 616, 617, 618, 619, 620, 621, 622, 623, 624, 625, 626, 627, 628, 629, 630, 631, 632, 633, 634, 635, 636, 637, 638, 639, 640, 641, 642, 643, 644, 645, 646, 647, 648, 649, 650, 651, 652, 653, 654, 655, 656, 657, 658, 659, 660, 661, 662, 663, 664, 665, 666, 667, 668, 669, 670, 671, 672, 673, 674, 675, 676, 677, 678, 679, 680, 681, 682, 683, 684, 685, 686, 687, 688, 689, 690, 691, 692, 693, 694, 695, 696, 697, 698, 699, 700, 701, 702, 703, 704, 705, 706, 707, 708, 709, 710, 711, 712, 713, 714, 715, 716, 717, 718, 719, 720, 721, 722, 723, 724, 725, 726, 727, 728, 729, 730, 731, 732, 733, 734, 735, 736, 737, 738, 739, 740, 741, 742, 743, 744, 745, 746, 747, 748, 749, 750, 751, 752, 753, 754, 755, 756, 757, 758, 759, 760, 761, 762, 763, 764, 765, 766, 767, 768, 769, 770, 771, 772, 773, 774, 775, 776, 777, 778, 779, 780, 781, 782, 783, 784, 785, 786, 787, 788, 789, 790, 791, 792, 793, 794, 795, 796, 797, 798, 799, 800, 801, 802, 803, 804, 805, 806, 807, 808, 809, 810, 811, 812, 813, 814, 815, 816, 817, 818, 819, 820, 821, 822, 823, 824, 825, 826, 827, 828, 829, 830, 831, 832, 833, 834, 835, 836, 837, 838, 839, 840, 841, 842, 843, 844, 845, 846, 847, 848, 849, 850, 851, 852, 853, 854, 855, 856, 857, 858, 859, 860, 861, 862, 863, 864, 865, 866, 867, 868, 869, 870, 871, 872, 873, 874, 875, 876, 877, 878, 879, 880, 881, 882, 883, 884, 885, 886, 887, 888, 889, 890, 891, 892, 893, 894, 895, 896, 897, 898, 899, 900, 901, 902, 903, 904, 905, 906, 907, 908, 909, 910, 911, 912, 913, 914, 915, 916, 917, 918, 919, 920, 921, 922, 923, 924, 925, 926, 927, 928, 929, 930, 931, 932, 933, 934, 935, 936, 937, 938, 939, 940, 941, 942, 943, 944, 945, 946, 947, 948, 949, 950, 951, 952, 953, 954, 955, 956, 957, 958, 959, 960, 961, 962, 963, 964, 965, 966, 967, 968, 969, 970, 971, 972, 973, 974, 975, 976, 977, 978, 979, 980, 981, 982, 983, 984, 985, 986, 987, 988, 989, 990, 991, 992, 993, 994, 995, 996, 997, 998, 999, 1000.

In Sarah's Out Lots.
 Lots 37, 36, 35, 29, 30, 19 and all of 19 E. of said 120 strip, 13, 14 and all of 14 S. of said strip, 15 and all of 15 S. of said strip, 18 and all of 18 W. and S. of said strip, 17 and all of 17 S. of said strip and N. of S. line of strip produced S.W. to Hoyt Ave.

In Rice St. Villas.
 Lots 21, 22 (full lot), 23, 24 (full lot), 25, 26, 4, 5 (full lot), 6, 7 (full lot), and 8, Block 5.
 Lots 25, 26, 27 (full lot), 28 (full lot), 29, 30, 1 (full lot), 2, 3 and 4, Block 6.

Lots 29, 30, 1 and 2, Block 7.
 " 38, 39, 1, 2 and 3, Block 8.

In Merrill's Division of Rice St. Villas.
 Lots 20 to 29 inclusive, Block 4.
 Lots 1 to 12 " " 5.
 Lots 13 to 19 " " except part belonging to Seo Railway, Block 3.

Lots 1 to 12 inclusive, except part belonging to Seo Railway and City of St. Paul, Block 6.

In Gurney Highland Park.
 Lots 9 (full lot), 1, 2 and 3, Block 12.
 " 22, 23 (full lot), 24, 1 and 2, Block 11.
 " 13, 12 and 11, Block 6.
 " 13, 14, 15 (full lot), 16, 17, 6, 7, 8, 9, 10, 11 (full lot), and 12 (full lot), Block 7.

Lots 15, 16, 17 (full lot), 18, 19, 20 (full lot), 21, 22, 1, 2 (full lot), 3, 4, 5, 6 (full lot), and 7, Block 8.

In Dawson's Lake Como and Phalen Ave. Add.
 Lots 1 to 15 inclusive, Block 4.
 " 1 to 15 " " 3.

1/2 NE 1/4 NE 1/4 Sec 19, T. 29, R. 22.
 In Havanaugh & Dawson's Addition.
 Lots 19, 20, 21, 22, 9, 10, 11 and 12, Block 2.
 " 19, 20, 21, 22, 9, 10, 11 and 12, " 1.

In Dawson's Fifth Addition.
 Lots 11, 12, 13, 14, 1, 2, 3 and 4, Block 2.
 " 9, 10, 11, 12, 13, 4 (full lot), 5, 6 (full lot), and 7, Block 1.
 E. 1/2 NW 1/4 NW 1/4 Sec 20, T. 29, R. 22, except Seo Railway and Morton's Second Add.

In Morton's Second Addition.
 Lots 1 and 2 (full lots), Block 1.
 " 1, 2, 3 and 12, Block 2.

In Morton's Addition.
 Lot 15, Block 2.
 NE 1/4 NW 1/4 Sec 20, T. 29, R. 22.
 SE 1/4 NW 1/4 Sec 20, T. 29, R. 22, except H.H. Thompson's Add.

In H.H. Thompson's Addition.
 Lot 1, Block 1.
 In Harrison & Handy's Addition.
 Lots 1 and 2 (full lots), Block 10.

" 1, 2, 3, 4, 5, 9, 10, 11, 12 (full lot), 13, 14, 15, 16, 17, 23, 24, 25, Bl. 11.
 " 12 and 3, Block 14.
 " 16 and 17 " 12.
 " 1 to 15 inclusive, Block 13.

In Schnitzius' Addition.
 Block 10.
 " 11.
 Lot 2, Block 12.
 E. 1/2 SE 1/4 NE 1/4 Sec 20, T. 29, R. 22.
 NE 1/4 SE 1/4 Sec 20, T. 29, R. 22.

J. Redington
 Secretary, Board of Park Commissioners

I hereby certify that I have caused to be surveyed and platted the land described in the certificate hereto annexed, and that this is a correct plat of the same.

L. W. Runklett
 Commissioner of Public Works.

State of Minnesota ss.
 County of Ramsey }
 On this 29th day of April 1909 personally came before me, the undersigned, L. W. Runklett, to me well known, and acknowledged that he executed the foregoing certificate as his own free act and deed.

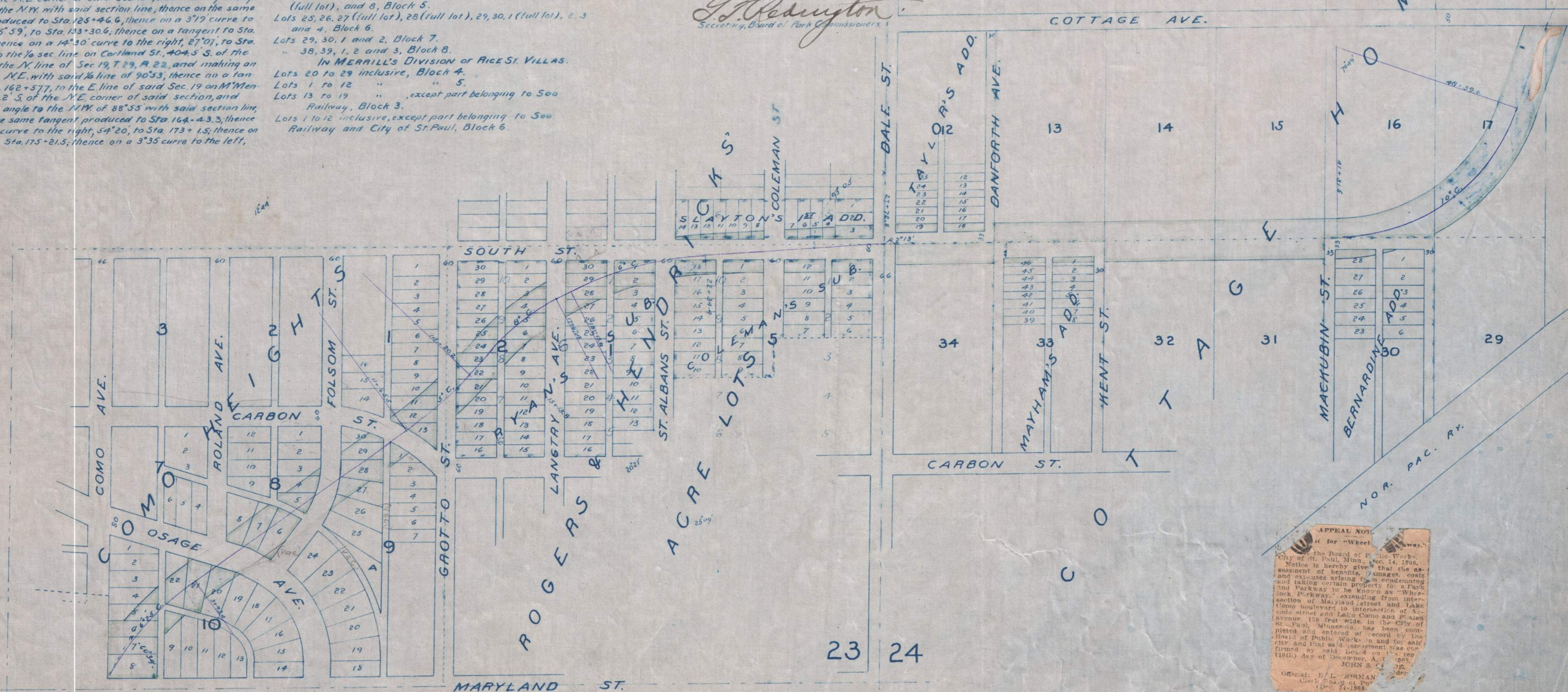
A. J. Moore

Notary Public, Ramsey County, Minn.
 My commission expires Oct 28, 1912

St. Paul, Minn., 1909.
 This is to certify that this is a true and correct plat of WHEELOCK PARKWAY the assessment for which was confirmed by the Board of Public Works in and for the Corporation of the City of St. Paul, Minn., on the 10th day of December 1908.

Charles J. Horn
 President, Board of Public Works

H. J. Mc Mahon
 Clerk, Board of Public Works



APPEAL NOT...
 City of St. Paul, Minn., Dec. 14, 1908.
 Notice is hereby given that the assessment of benefits, damages, costs and expenses arising from the condemnation and taking certain property for a Wheelock Parkway, extending from the intersection of Maryland Street and Lake Como Boulevard to the intersection of Lake Como and Phalen Avenue, 120 feet wide in the City of St. Paul, Minnesota, has been confirmed and that said assessment was confirmed by said local board on the 10th day of December A. D. 1908.

1349
 1074

WHEELOCK PARKWAY

SHEET 2 OF 4

SCALE 1" TO 200'

1349
2 of 4

