

NORTH 1/2 of SOUTH 1/2 of S.W. 1/4.

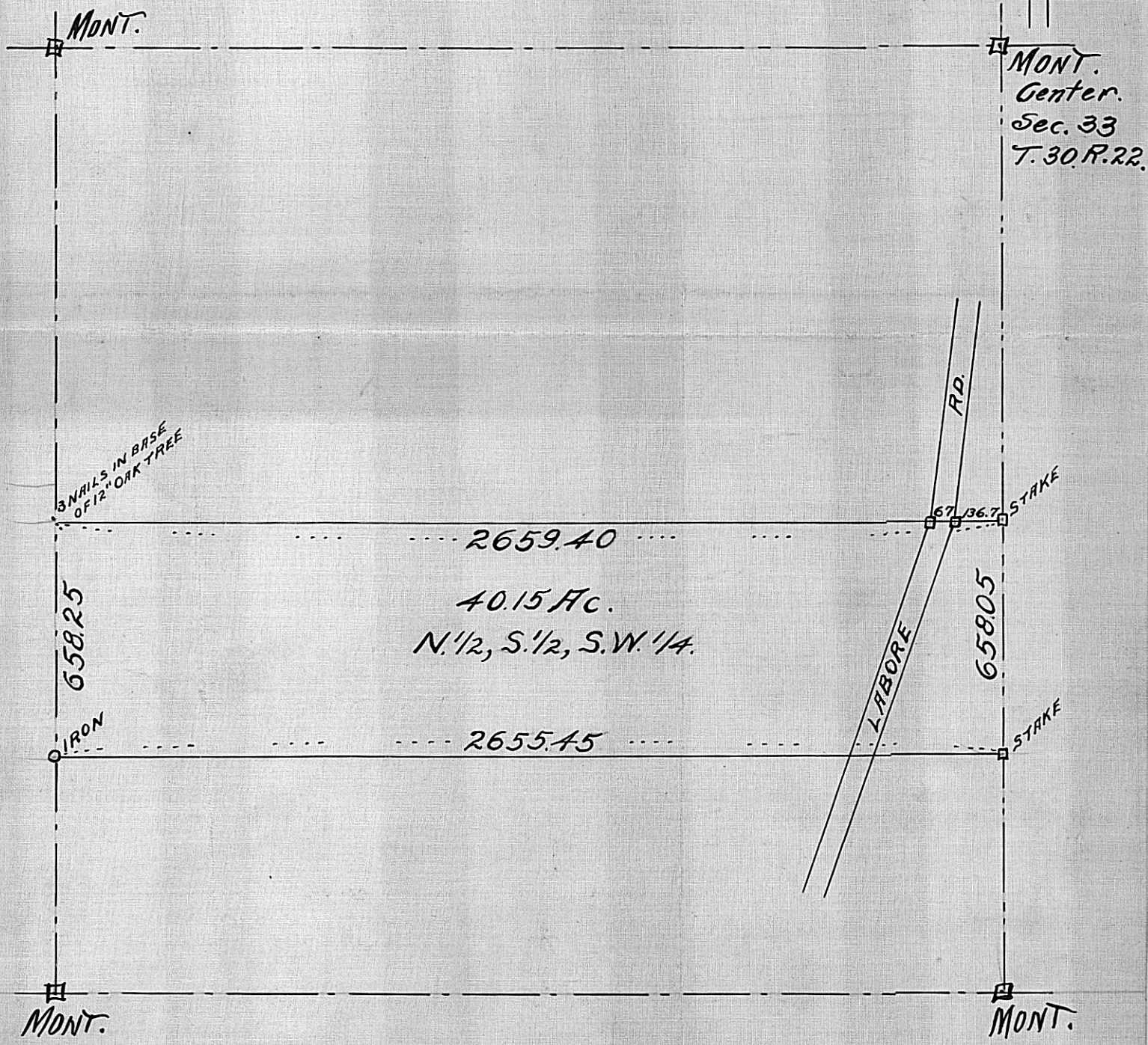
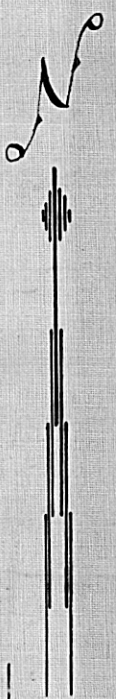
SEC. 33, T. 30 R. 22.

JOHN B. IRVINE, SURVEYOR.

ST. PAUL, MINN.

SCALE 400 ft per inch.

SEPT. 29 - 1908.



NORTH 1/2 of SOUTH 1/2 of S.W. 1/4.

SEC. 33, T. 30 R. 22.

JOHN B. IRVINE, SURVEYOR.

ST. PAUL, MINN.

SCALE 400 ft per inch.

SEPT. 29 - 1908.

