

Auditor's Subdivision No 55.

ST. PAUL, MINN.

56
83
162
452
448

Recorded, Mar. 11th 1907.

I, John B. Irvine, County Surveyor of Ramsey County Minnesota, hereby certify to the survey and platting of the tract described on this map of Auditor's Subdivision No. 55, St. Paul, Minn, prepared on request and by order of the County Auditor, that monuments are placed as indicated thereon and that the plat is correct.

John B. Irvine
County Surveyor

State of Minnesota } ss.
County of Ramsey }

On this 2nd day of March A.D. 1907 personally appeared before me John B. Irvine, County Surveyor of Ramsey County to me well known, and acknowledged that he executed the foregoing certificate as his own free act and deed as such County Surveyor.

Silas S. Foreman
My commission expires January 27, 1914 Notary Public, Ramsey Co. Minn.

State of Minnesota } ss.
County of Ramsey }

I, Edw. G. Kraemer, as County Auditor of the County of Ramsey, in the State of Minnesota, do hereby certify that in compliance with and according to the provisions of Sec 991, Chapter 11, Revised Laws of 1905, I have as said County Auditor, caused the following described tract of land to wit:

The North East Quarter of Section 3, T. 28, N., R. 22, W. to be surveyed and plat and hereafter to be known as Auditor's Subdivision No. 55, St. Paul, Minn. is shown on this plat.

Witness my hand and official seal this 2nd day of March, A.D. 1907

In presence of
Ben Schorn

Edw. G. Kraemer
County Auditor

State of Minnesota } ss.
County of Ramsey }

On this 2nd day of March, A.D. 1907 personally appeared before me, Edw. G. Kraemer, Auditor of Ramsey County to me well known and acknowledged that he executed the foregoing certificate as his own free act and deed as such County Auditor.

My Commission Expires

Notary Public, Ramsey Co. Minn.

Accepted and Approved this 2nd day of March A.D. 1907

E. Kraemer
Justus Jordan } Plat Commissioners.
Hubert Schmitt City Engineer.

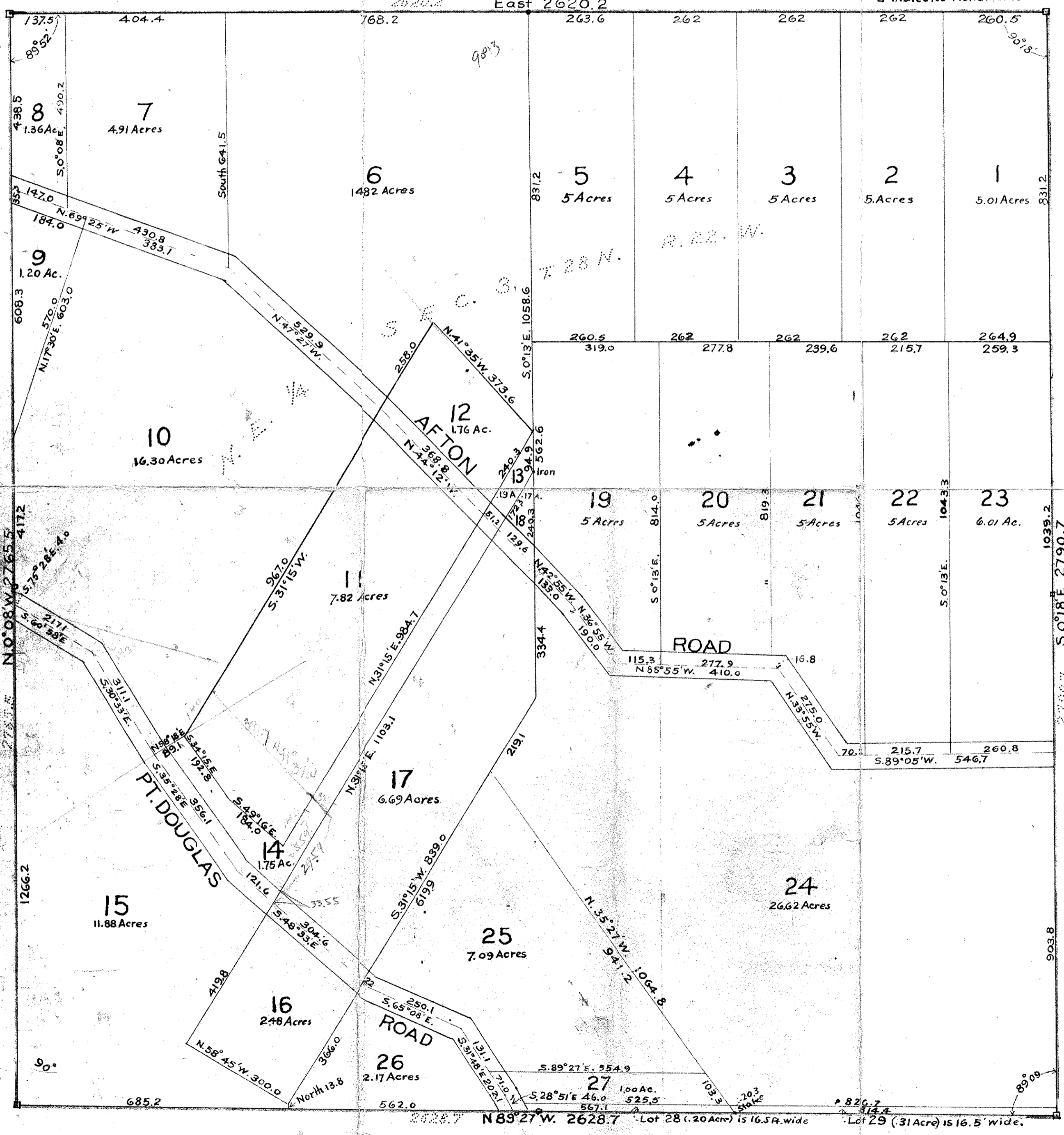
Accepted by the Assembly
Accepted by the Board of Aldermen
Approved

1907.
1907.
1907.

City Clerk.

SCALE: 200 FT. TO AN IN.

Acreage shown is exclusive of roads.
□ Indicates Monuments.



55 SUB 55