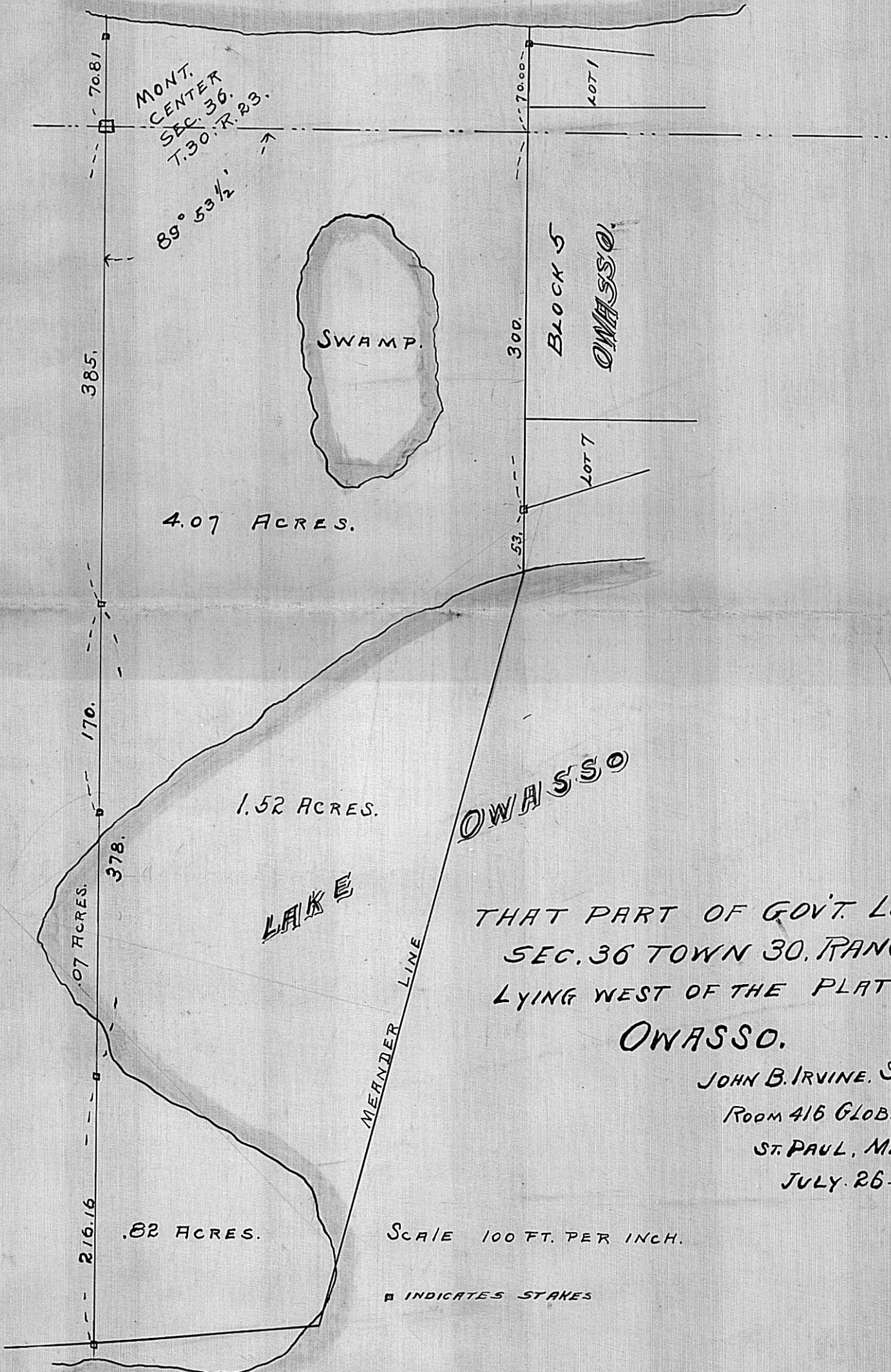


OWASSO LAKE,



THAT PART OF GOV'T. LOT 3
SEC. 36 TOWN 30, RANGE 23
LYING WEST OF THE PLAT OF
OWASSO.

JOHN B. IRVINE, SURVEYOR,
ROOM 416 GLOBE BLDG.
ST. PAUL, MINN.
JULY 26-07.