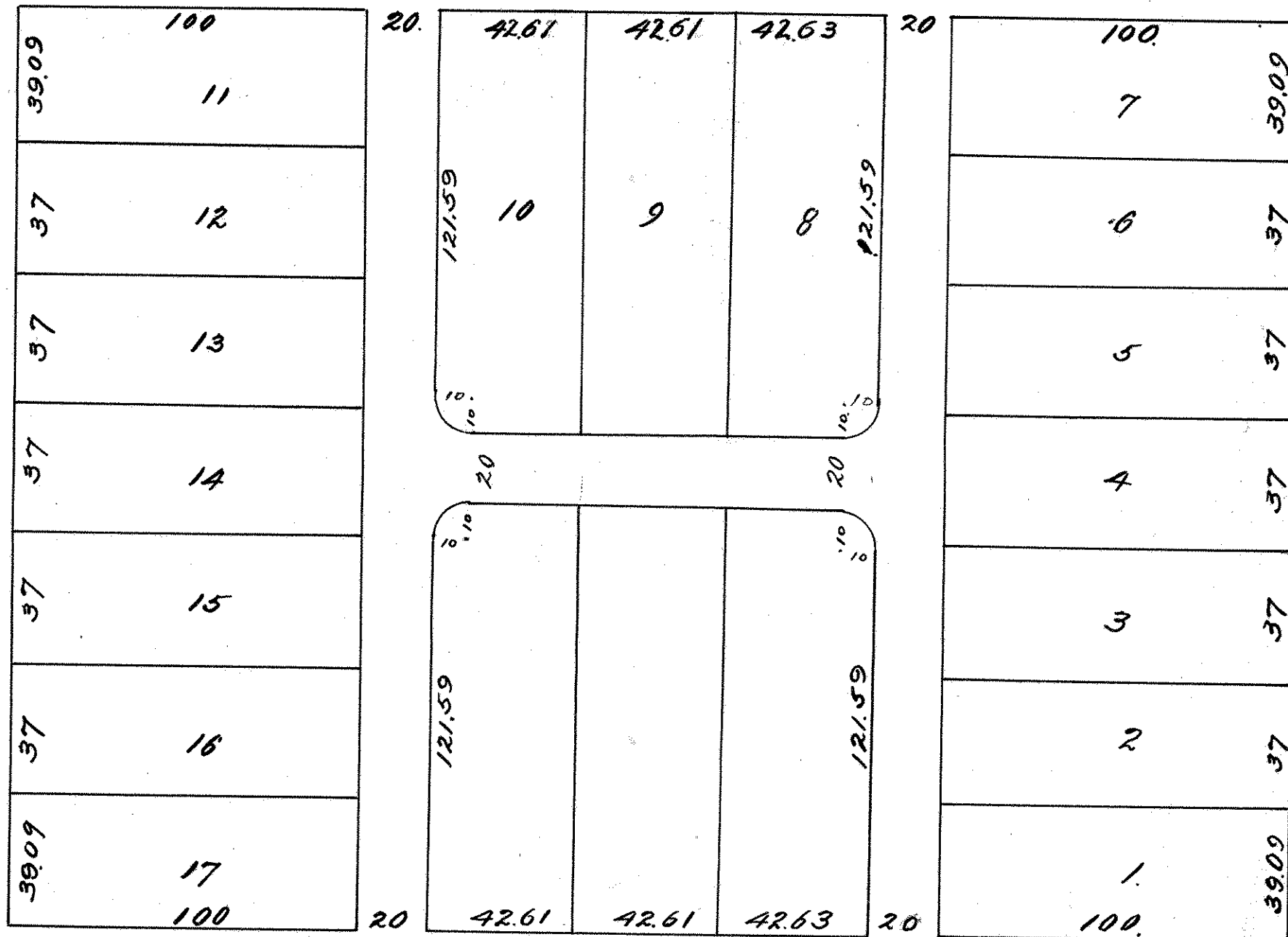


BLOCK 2 HAMLINE SYNDICATE ADD No. 1

JOHN B. IRVINE, SURVEYOR.
Room 508 GLOBE BLDG.
ST. PAUL MINN.
JULY 20-05.

MINNEHAHA ST.

ASBURY AVE



SIMPSON AVE.

VAN BUREN ST.

N