

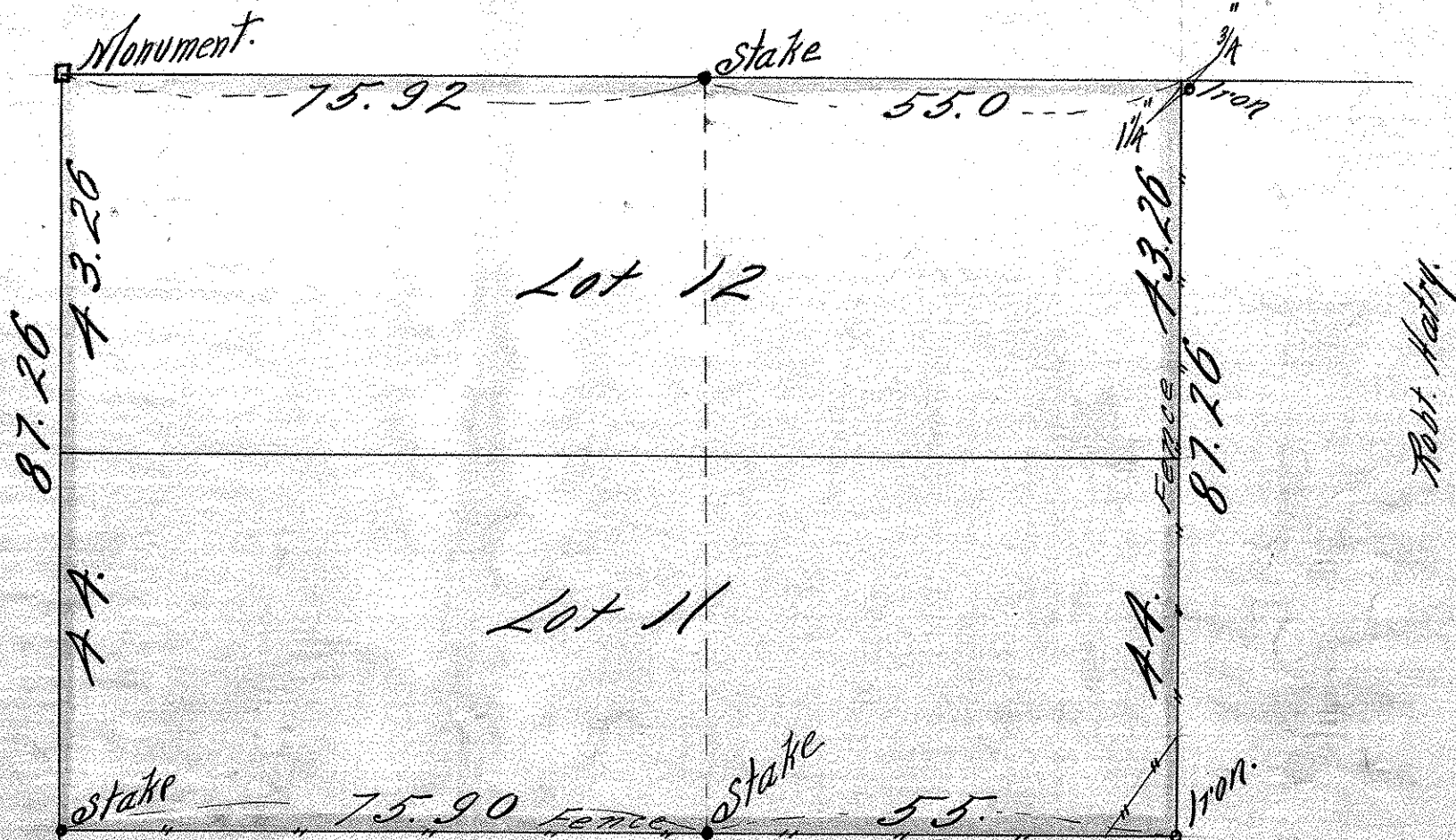
LOTS 11 & 12 BLOCK 1A BEAUPRE & KELLY'S
ADDITION.

JESSANTINE

Scale 20 feet pr. inch.
ST

S

BRADLEY ST.



Robt. Kelly.

St. Paul Minn. July 16th 1904

I hereby certify that this diagram correctly represents
"Lots 11 & 12 Block 1A BEAUPRE & KELLY'S ADD." as
surveyed by me this day.

John B. Grove
County Surveyor Room 16 Court House.