

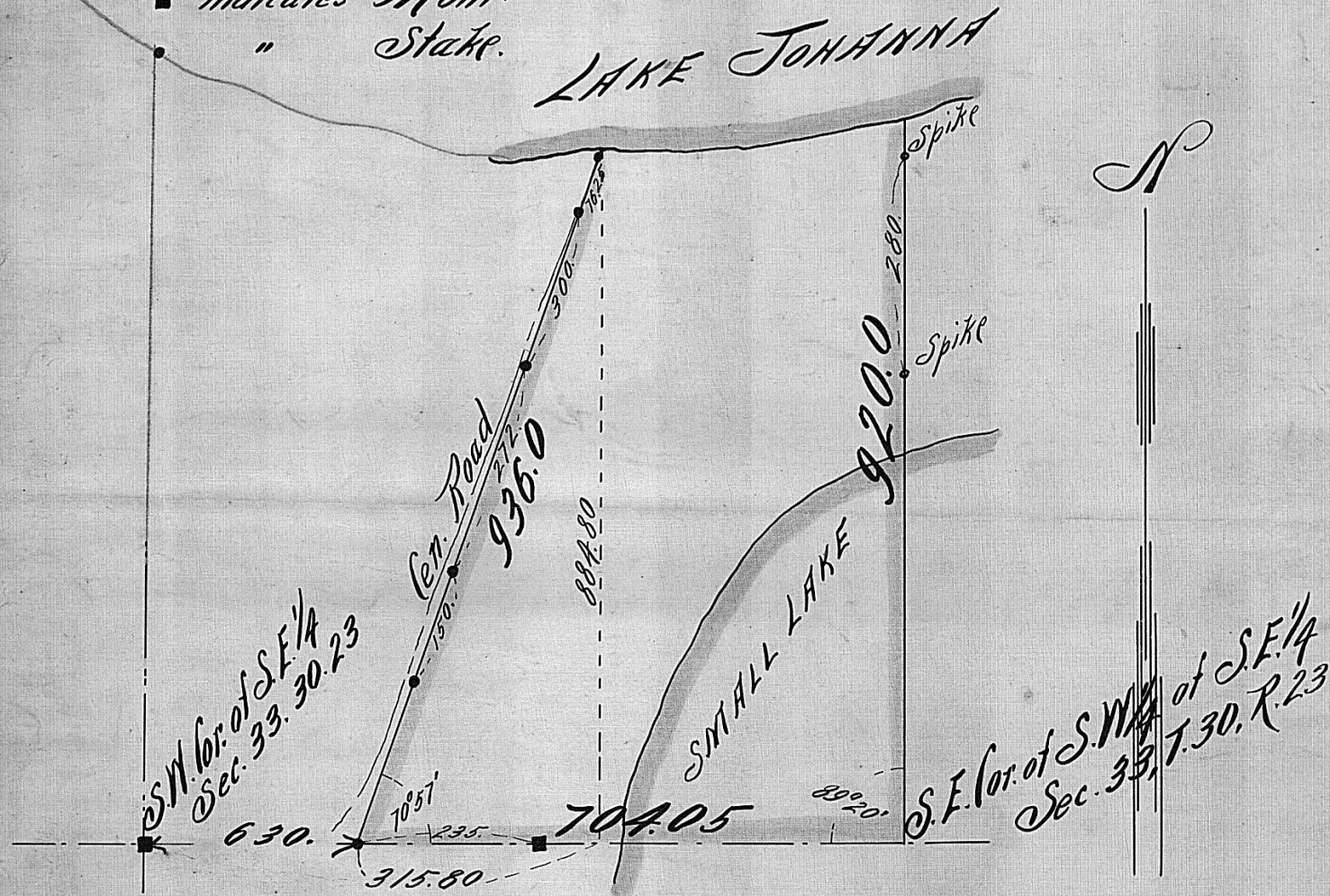
PART OF S.W. 1/4 OF S.E. 1/4 OF SEC. 33
TOWN 30, RANGE 23

Note: The S.W. 1/4 of S.E. 1/4 of Sec. 33, is Gov't. Lot 5.

Scale 200 Feet pr. inch

■ indicates Mont.
" State.

LAKE JOHANNA



St. Paul Minn. Dec. 14th 1904

I hereby certify that this diagram correctly represents "A MISCELLANEOUS TRACT OF LAND IN THE S.W. 1/4 OF THE S.E. 1/4 OF SEC. 33, T. 30, R. 23," as surveyed by me this day.

John F. Irvine
County Surveyor
Room 16 Court House