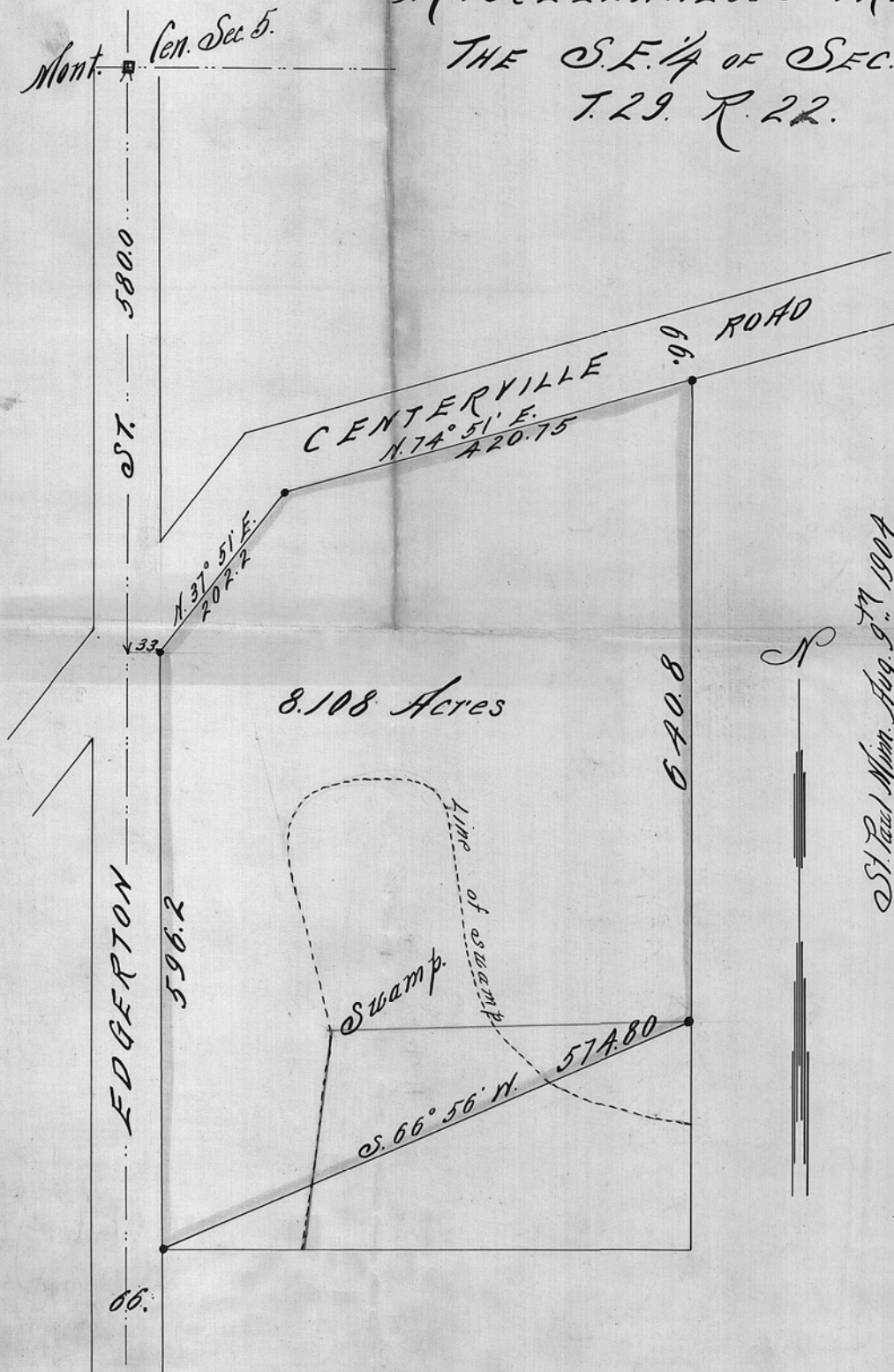


MISCELLANEOUS TRACT IN
THE S.E. 1/4 OF SEC. 5,
T. 29. R. 22.

Scale 100 Feet per inch
• indicates Stake



St. Paul Minn. Aug. 9th 1904

I hereby certify that this diagram correctly represents
"A Miscellaneous Tract of land in the S.E. 1/4 of Sec. 5
T. 29. R. 22." as surveyed by me Aug. 6th & 8th.

John B. Swine,
County Surveyor
County Room 16 Court House.