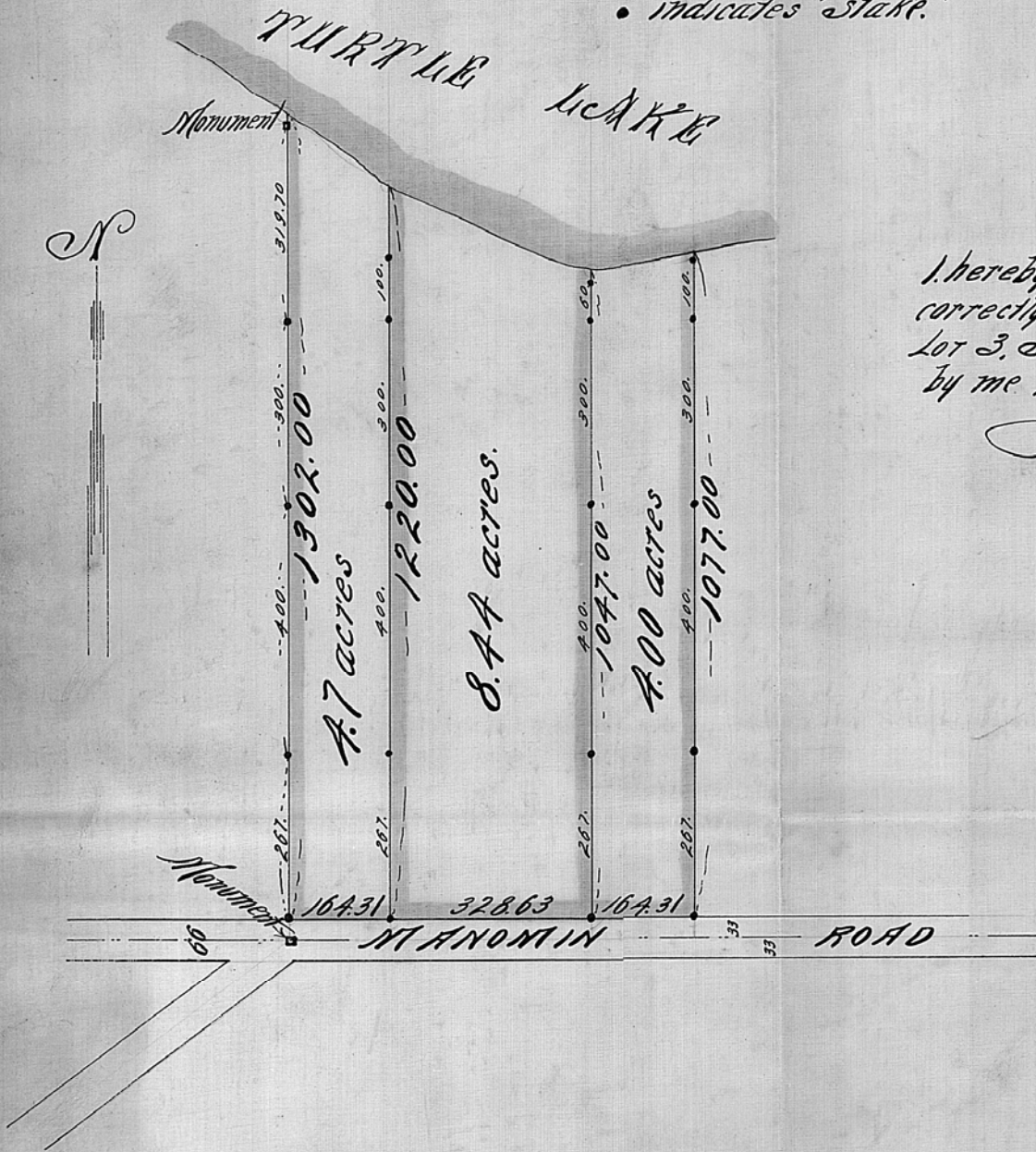


WEST 1/2 OF LOT 3
SEC. 14, T. 30, R. 23.

Scale 200 Feet pr. inch.
• indicates stake.



St. Paul Minn. Nov. 3rd 1903
I hereby certify that this diagram
correctly represents "THE WEST 1/2 OF
LOT 3, SEC. 14, T. 30, R. 23" as surveyed
by me this day.

John B. Irvine
County Surveyor
Room 16 Court House.