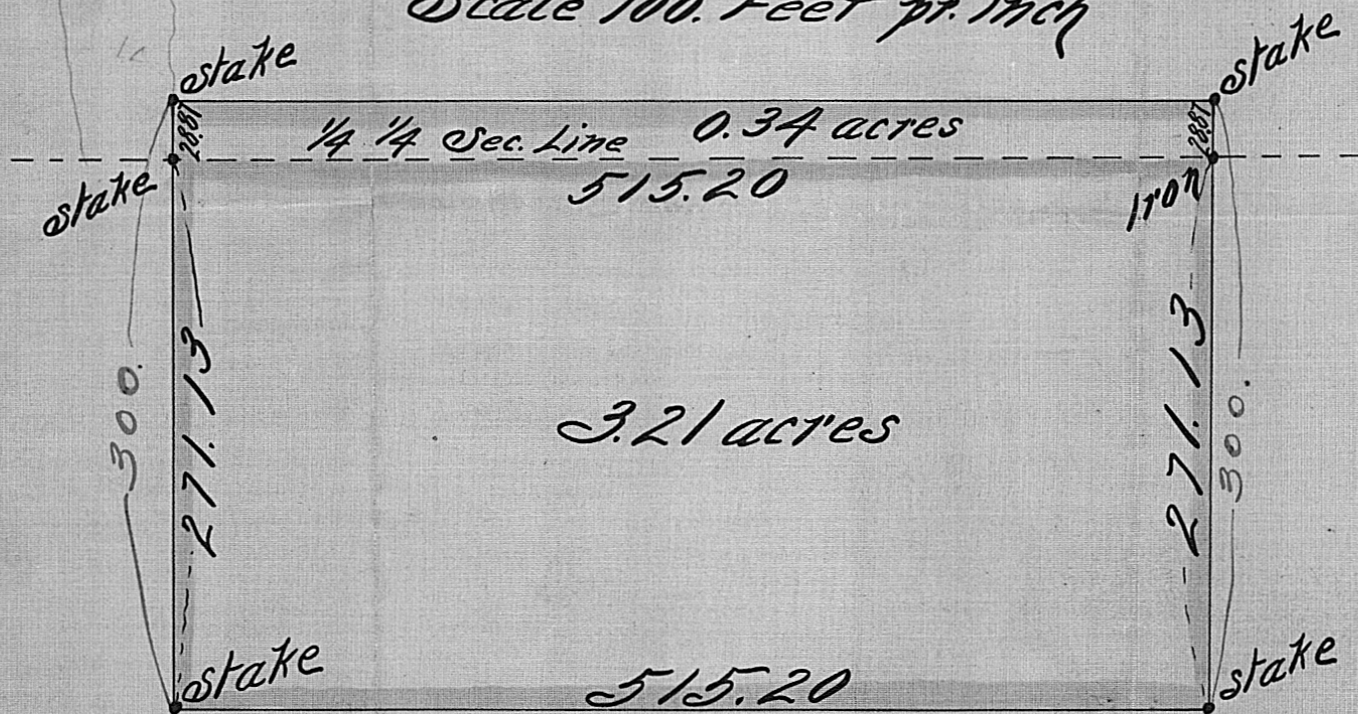


A MISCELLANEOUS TRACT OF LAND  
IN THE S.W. 1/4 OF THE S.W. 1/4 OF  
SEC. 11, T. 30, R. 22

Scale 100. Feet pr. inch



3.21 acres

St. Paul Minn. Apr. 21<sup>st</sup> 1903

I hereby certify that this diagram correctly represents  
"A MISCELL. TRACT IN THE S.W. 1/4 OF THE S.W. 1/4 OF  
SEC. 11, T. 30, R. 22" as surveyed by me this day.

John B. Swine  
County Surveyor Room 16 Court House