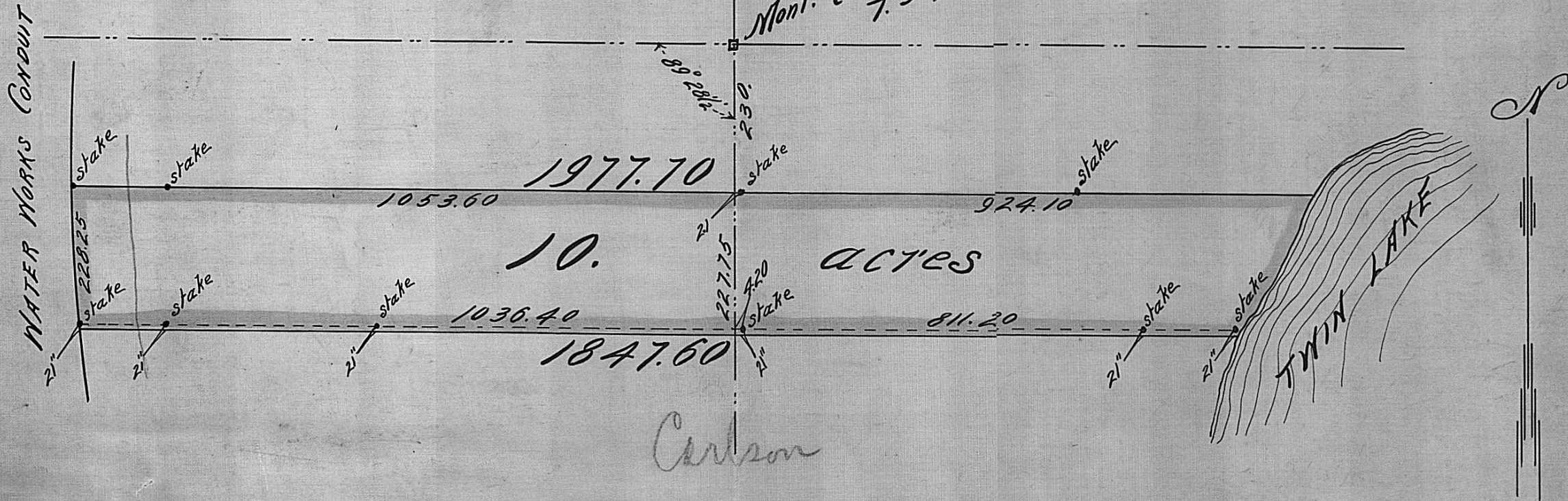


10. ACRES IN THE S. 1/2 OF SEC. 31, T. 30, R. 22

Sur. for Carl Gustafson Nov. 28th 1902

200. ft. pr. inch

Mont. Cen. Sec. 31
T. 30, R. 22



B. 53 P. 37.

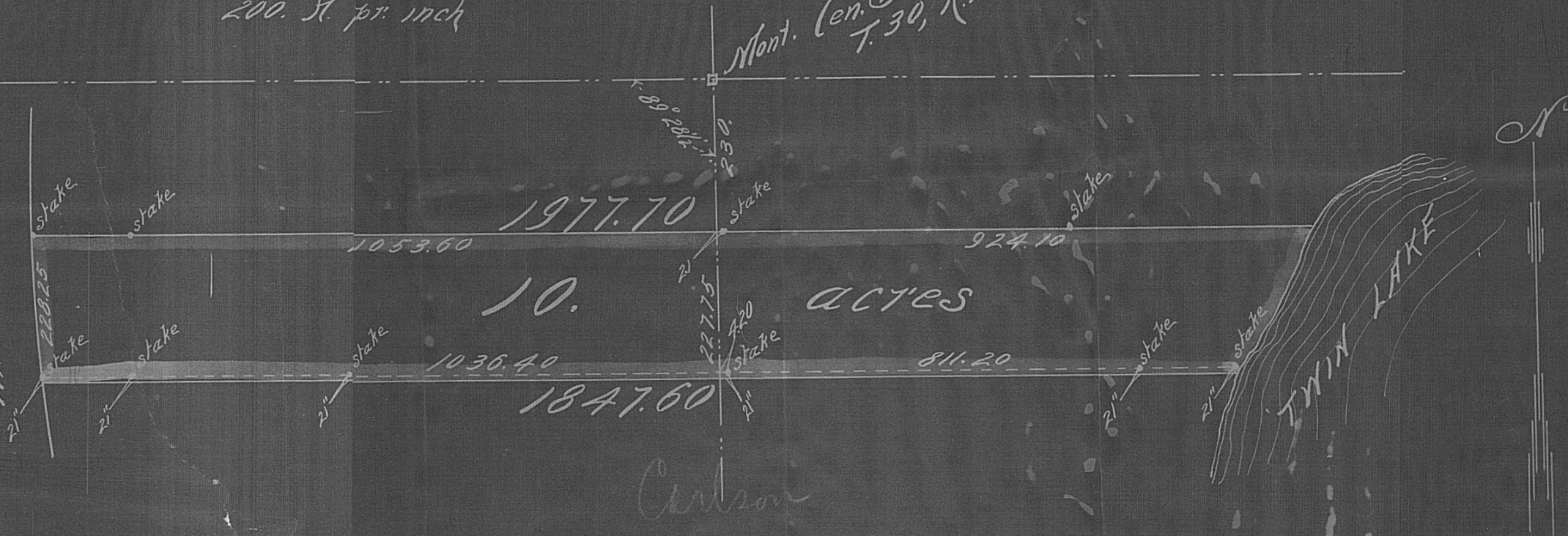
10. ACRES IN THE S. 1/2 OF SEC. 31, T. 30, R. 22

Sur. for Carl Gustafson Nov. 28th 1902

200. ft. pr. inch

Mont. Gen. Sec. 31
T. 30, R. 22

WATER WORKS CONDUIT



B. 53 P. 37