

CE 1

St. P. & D. R. R.

St Paul, Jan 5th 1886

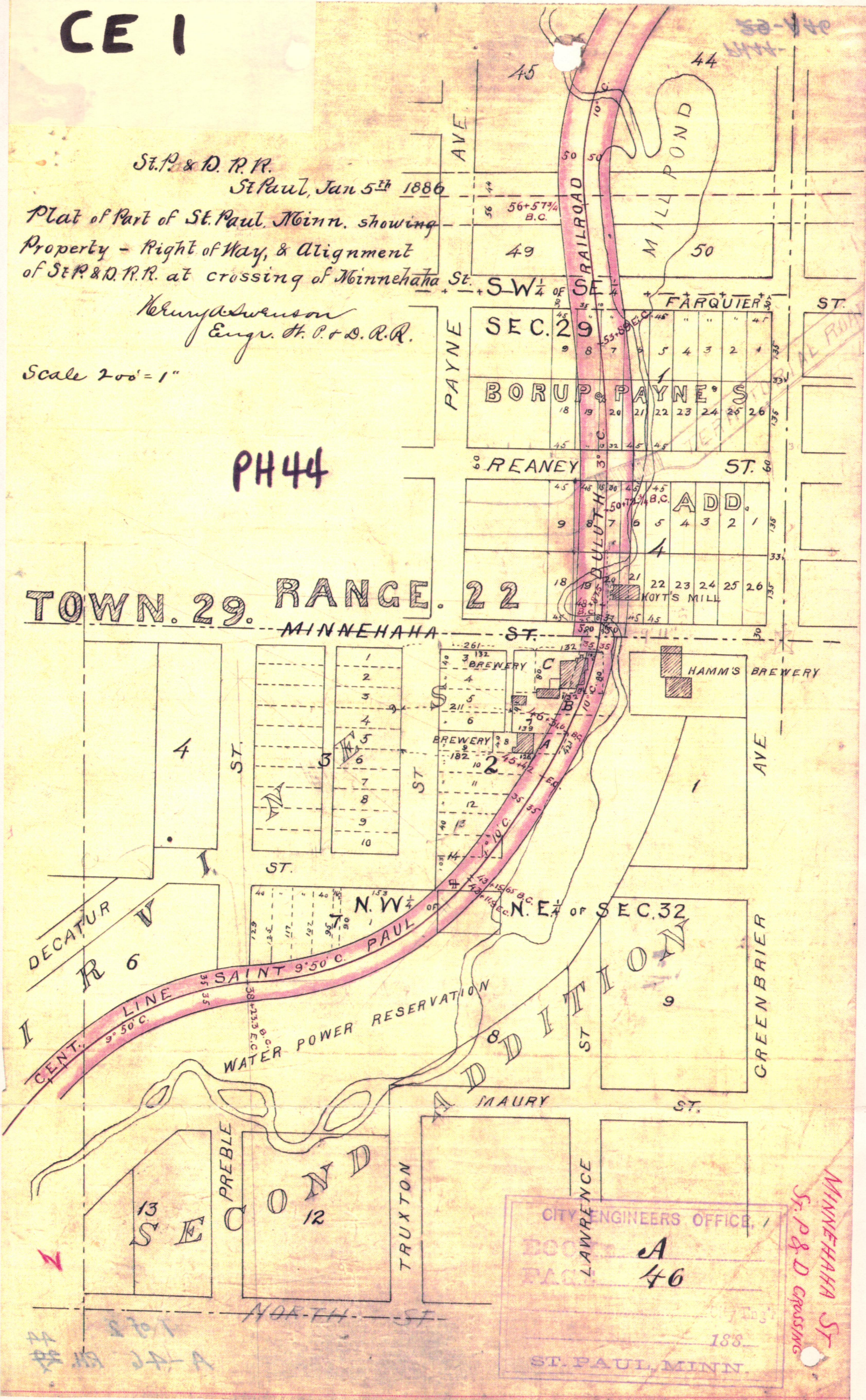
Plat of Part of St. Paul, Minn. showing
Property - Right of Way, & Alignment
of St. P. & D. R. R. at crossing of Minnehaha St.

Henry Swenson
Engr. St. P. & D. R. R.

Scale 200' = 1"

PH 44

TOWN. 29. RANGE. 22



CITY ENGINEERS OFFICE,
 ECCO
 PAGE
 LAWRENCE
 A
 46
 188
 ST. PAUL, MINN.

MINNEHAHA ST.
 St. P. & D. CROSSING

77 871
 44-14-A