

**LOCATION OF PROPERTY SURVEYED**

Part of the Southwest Quarter of Section 9, and part of the Northwest Quarter of Section 16, Township 29, Range 22, Ramsey County, Minnesota.

**GENERAL NOTES**

- 1.) Survey coordinate basis: Ramsey County System (North American Datum of 1983 Coordinates, final adjustment December 17, 1999).
- 2.) No indication of wetland delineation by a qualified wetland specialist has been located or observed on site.

**UTILITY NOTES**

- 1.) Utility information from plans and markings was combined with observed evidence of utilities to develop a view of the underground utilities shown hereon. However, lacking excavation, the exact location of underground features cannot be accurately, completely and reliably depicted. Where additional or more detailed information is required, excavation may be necessary.
- 2.) Other underground utilities of which we are unaware may exist. Verify all utilities critical to construction or design.
- 3.) Some underground utility locations are shown as marked onsite by those utility companies whose locators responded to our Gopher State One Call, ticket number I21911161.
- 4.) Contact GOPHER STATE ONE CALL at 651-454-0002 (800-252-1166) for precise onsite location of utilities prior to any excavation.

**BENCH MARKS (BM)**

- 1.) Top of marker, MnDOT monument "6212M", at east end of railing on south side of St. Hwy. No. 36 bridge No. 5715 over Keller Creek.  
Elevation = 873.624 feet (NGVD 1929)  
Elevation = 873.797 feet (NAVD 1988)
  - 2.) Top of 3" aluminum monument, Ramsey County monument "9185", located in the southeast radius of Hwy. 61 and Co. Rd. B, 38.9 feet west of the westerly curb of entrance to Keller Golf Course, 22.1 feet to the southeast of a power pole, 32.6 feet east of a 12" ash (2001), 8.1 feet south of a cyclone fence and 0.5 feet north of a sign and post.  
Elevation = 872.498 feet (NGVD 1929)  
Elevation = 872.672 feet (NAVD 1988)
  - 3.) Top of nail in south face of "Keller Island Picnic Area" sign.  
Elevation = 866.50 feet (NGVD 1929)
  - 4.) Top of big spike in the south end of "Keller Lakeside Picnic Area" sign at the entrance to the middle parking lot.  
Elevation = 880.97 feet (NGVD 1929)
  - 5.) Top of scribed "X" in the northwest corner of the concrete pad of the picnic shelter 7.5% feet northwesterly of the drinking fountain.  
Elevation = 865.16 feet (NGVD 1929)
  - 6.) Top of west side of most northerly guardrail post on the west side of Highway 61.  
Elevation = 874.99 feet (NGVD 1929)
  - 7.) Top of railroad spike in the north side of "Lower Keller Picnic Area" sign.  
Elevation = 865.25 feet (NGVD 1929)
  - 8.) Top of westerly guard post for gate at trash enclosure of most southerly parking lot.  
Elevation = 868.69 feet (NGVD 1929)
- Elevations shown on survey are based on NGVD 1929.

**KELLER LAKE WATER LEVEL DATA**

(From DNR Lakefinder Web Site)

Period of record: 01/01/1924 to 09/12/2002  
# of readings: 2498  
Highest recorded: 862.37 ft (07/03/1978)  
Lowest recorded: 854.59 ft (02/28/1926)  
Recorded range: 7.78 ft  
Last reading: 857.96 ft (09/12/2002)  
Ordinary High Water Level (OHW) elevation: 859.64 ft  
Datum: MSL 1912 (ft)

Note: The conversion from MSL 1912 to NAVD 1988 is in the range of +0.66 to +0.685 per correspondence from MnDOT.

100-Year Water Surface Elevation (Per Ramsey-Washington Metro Watershed District) = 861.43 feet (NGVD 1929)

**LEGEND**

BBQ	Denotes barbecue grill
BE	Denotes building entrance
BTL	Denotes beaver tail curb
BWB	Denotes brick wall base
BWT	Denotes brick wall top
BWW	Denotes bridge wing wall
CB	Denotes catch basin
CMP	Denotes corrugated metal pipe
COL	Denotes column
CS	Denotes curb stop
CWB	Denotes concrete wall base
CWT	Denotes concrete wall top
DIP	Denotes ductile iron pipe
EB	Denotes electric box
EM	Denotes electric meter
G	Denotes gutter
GAS V	Denotes gas valve
GP	Denotes guard post
HCR	Denotes handicap ramp
HCS	Denotes handicap sign
HDPE	Denotes high density polyethylene pipe
INV	Denotes structure invert
MC	Denotes metal cover
MH	Denotes manhole
PVC	Denotes polyvinylchloride pipe
RCP	Denotes reinforced concrete pipe
SAN S	Denotes sanitary sewer
STC	Denotes surmountable concrete curb
SWB	Denotes stone wall base
TC	Denotes top of concrete curb
TRANS	Denotes transformer
TCS	Denotes traffic control sign
UCG	Denotes underground communication line
UCE	Denotes underground electric line
W	Denotes water line
WAF	Denotes water fountain
WV	Denotes water valve
BAS	Denotes Basswood tree
BIR	Denotes Birch tree
BOX	Denotes Boxelder tree
COT	Denotes Cottonwood tree
HACK	Denotes Hackberry tree
LOC	Denotes Locust tree
MPL	Denotes Maple tree
SPCB	Denotes Colorado Blue Spruce tree
SPCG	Denotes Colorado Green Spruce tree
WIL	Denotes Willow tree
WLNT	Denotes Walnut tree

**U.S. HIGHWAY NO. 61  
(MAPLEWOOD DRIVE)**

I hereby certify that this survey, plan, or report was prepared by me or under my direct supervision and that I am a duly Licensed Land Surveyor under the laws of the State of Minnesota.

Dated this 25th day of July, 2012

SUNDE LAND SURVEYING, LLC.

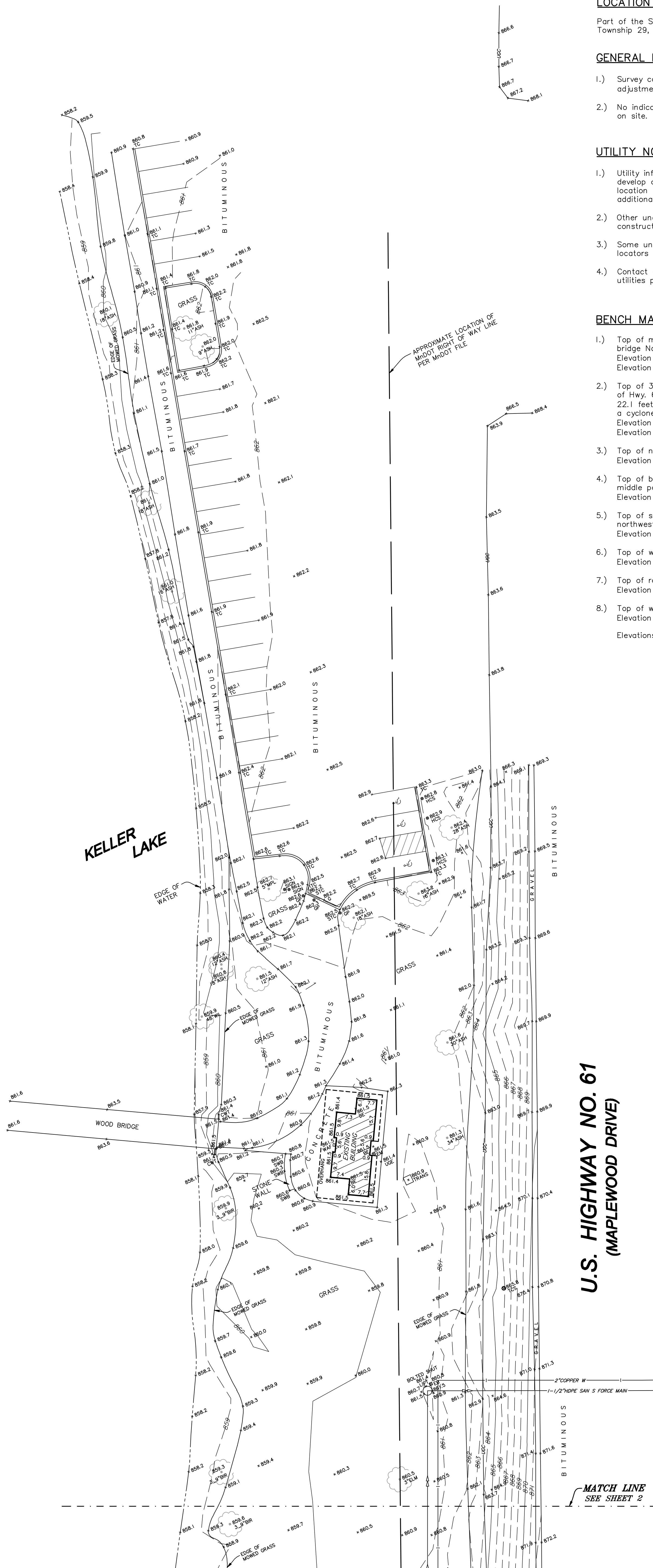
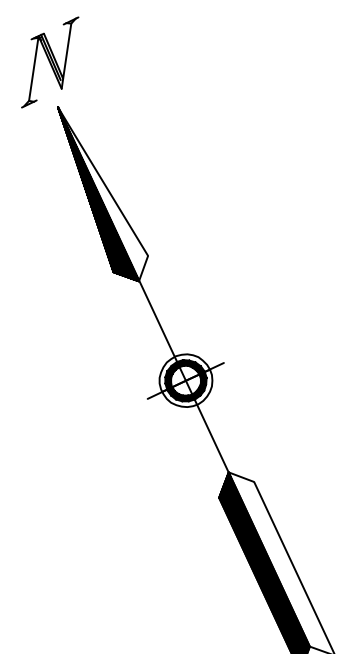
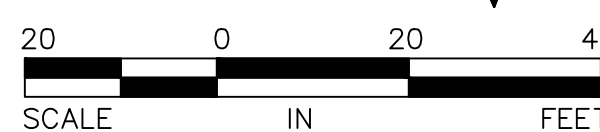
By: *Mark S. Hanson*  
Mark S. Hanson, P.L.S. Minn. Lic. No. 15480

Revision	By	Date
	SMT	

Drawing Title:  
**LOCATION, TOPOGRAPHIC and UTILITY SURVEY FOR:  
Ramsey County Parks and Recreation  
Keller Trail - Boardwalk**

**SUNDE LAND SURVEYING** 9001 East Bloomington Freeway (35W) • Suite 118  
Bloomington, Minnesota 55420-3435  
952-881-2455 (Fax: 952-888-9526)  
www.sunde.com

Project: 2012-023-A	Bk/Pg: 599/59	Date: 07/25/2012
Township: 29	Range: 22	Section: 9 & 16
File: 2012023A001.dwg		Sheet: <b>1 of 6</b>



L:\2012\2012023A\2012023A001.dwg 9/7/2011 12:40:58 PM GDT

MATCH LINE  
SEE SHEET 1

KELLER LAKE

EDGE OF WATER

KELLER LAKE

APPROXIMATE LOCATION OF  
MNDOT RIGHT OF WAY LINE  
PER MNDOT FILE

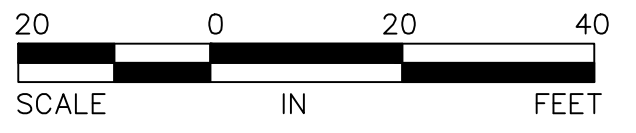
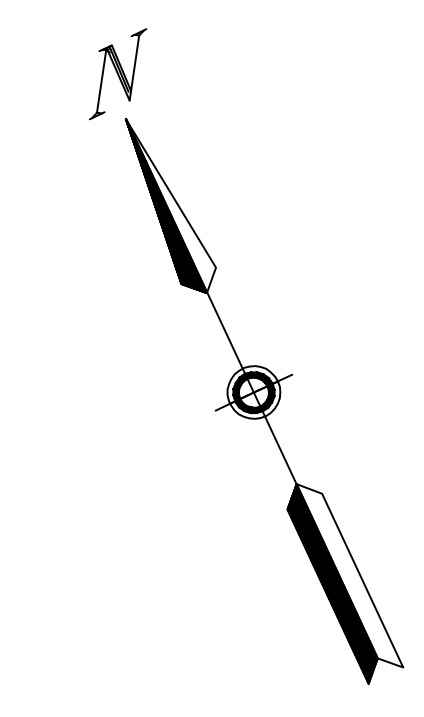
U.S. HIGHWAY NO. 61  
(MAPLEWOOD DRIVE)

BITUMINOUS  
GRAVEL

Dated this 25th day of July, 2012

Certified by: *Mark S. Hanson*  
Mark S. Hanson, P.L.S. Minn. Lic. No. 15480

MATCH LINE  
SEE SHEET 3



**SUNDE**  
LAND SURVEYING

9001 East Bloomington Freeway (35W) • Suite 118  
Bloomington, Minnesota 55420-3435  
952-881-2455 (Fax: 952-888-9526)  
www.sunde.com

File: 2012023A001.dwg Sheet: 2 of 6

LU:\2007\ham\S\S Templates\USLS Standard Layout.dwg 9/7/2011 12:40:58 PM GDT

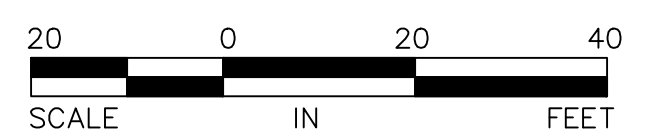
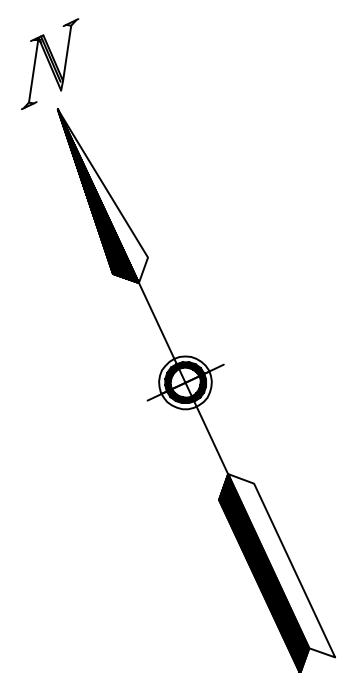
MATCH LINE  
SEE SHEET 2

EDGE OF WATER

U.S. HIGHWAY NO. 61  
(MAPLEWOOD DRIVE)

Dated this 25th day of July, 2012

Certified by: *Mark S. Hanson*  
Mark S. Hanson, P.L.S. Minn. Lic. No. 15480



L:\2007\hanson\US Templates\US Standard Layout.dwg 9/2/2011 12:40:58 PM GDT



MATCH LINE  
SEE SHEET 3

APPROXIMATE LOCATION OF WAY LINE  
MINN DOT RIGHT OF WAY  
PER MINN DOT FILE

INDIAN MOUND  
873.6 BERM  
874.0 BERM  
874.0 BERM  
871.0 BERM  
872.8 BERM  
873.0 OAK  
874.0 BERM

BITUMINOUS

U.S. HIGHWAY NO. 61  
(MAPLEWOOD DRIVE)

KELLER LAKE

EDGE OF WATER

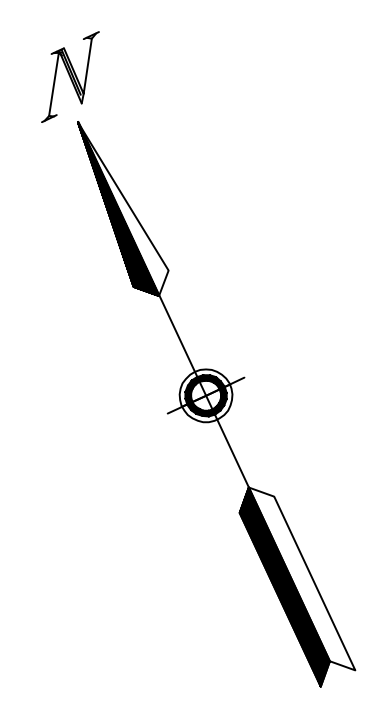
EDGE OF MOWED GRASS

EDGE OF MOWED GRASS

EDGE OF MOWED GRASS

Dated this 25th day of July, 2012

Certified by: *Mark S. Hanson*  
Mark S. Hanson, P.L.S. Minn. Lic. No. 15480



MATCH LINE  
SEE SHEET 5

**SUNDE**  
LAND SURVEYING

9001 East Bloomington Freeway (35W) • Suite 118  
Bloomington, Minnesota 55420-3435  
952-881-2455 (Fax: 952-888-9526)  
[www.sunde.com](http://www.sunde.com)

File: 2012023A001.dwg

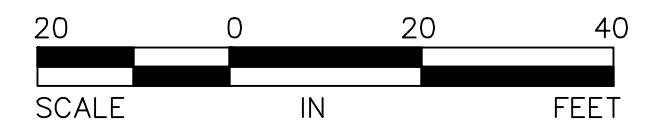
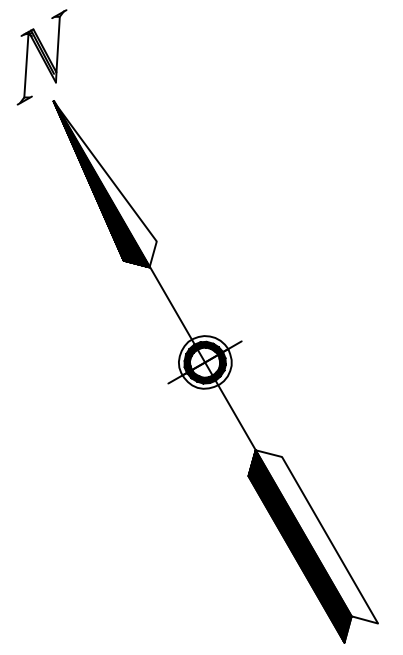
MATCH LINE  
SEE SHEET 4

APPROXIMATE LOCATION OF  
MIDDOT RIGHT OF WAY LINE  
PER MIDDOT FILE

**U.S. HIGHWAY NO. 61**  
(MAPLEWOOD DRIVE)

**KELLER LAKE**

MATCH LINE  
SEE SHEET 6



Dated this 25th day of July, 2012

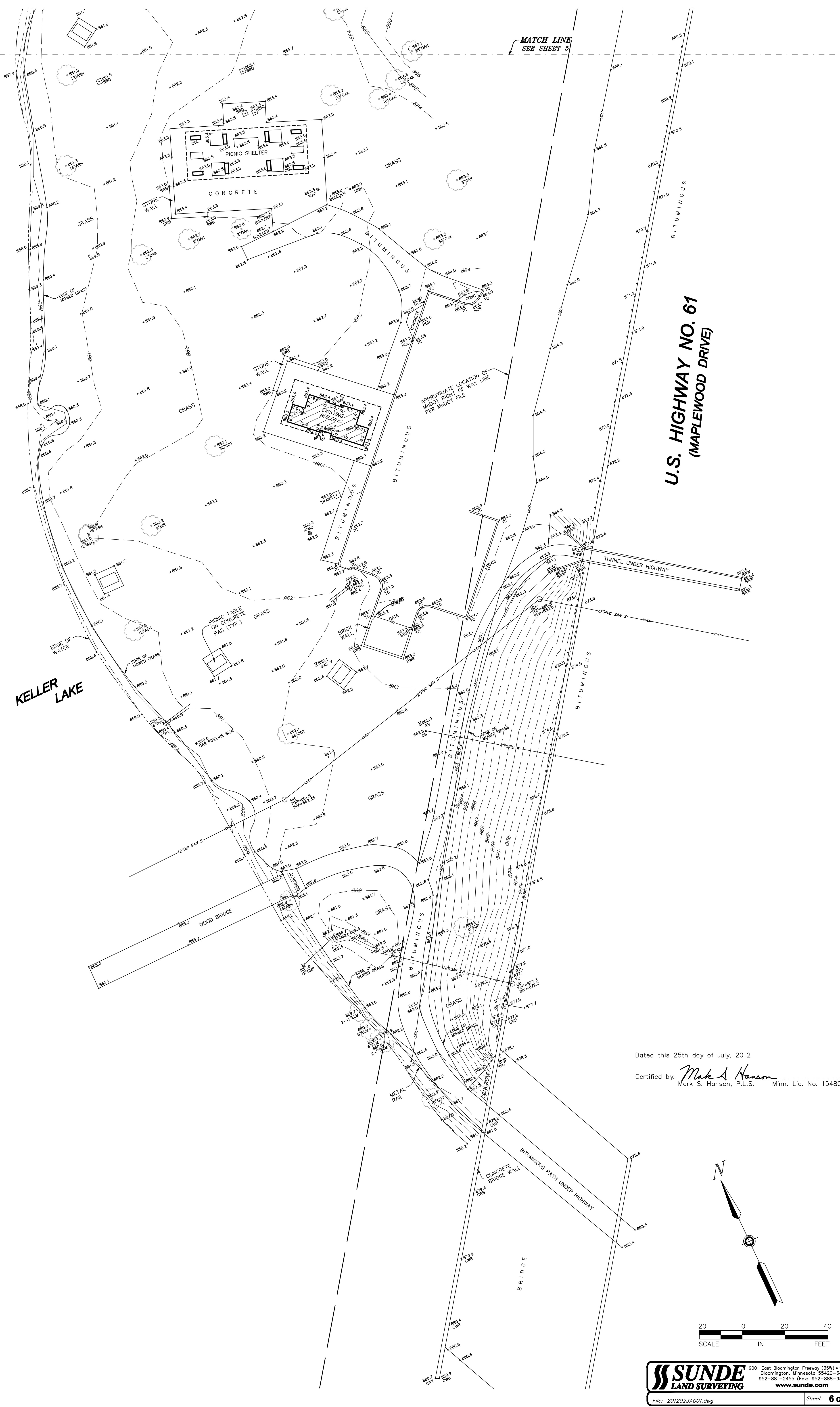
Certified by: *Mark S. Hanson*  
Mark S. Hanson, P.L.S. Minn. Lic. No. 15480

**SUNDE**  
LAND SURVEYING  
9001 East Bloomington Freeway (35W) • Suite 118  
Bloomington, Minnesota 55420-3435  
952-881-2455 (Fax: 952-888-9526)  
www.sunde.com

File: 201203A001.dwg

Sheet: 5 of 6

LU:\2007\hanson\U.S. Templeton\U.S. Standard Layouts\sheet 9/7/2011 12:46:58 PM CDT



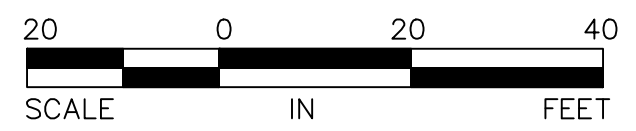
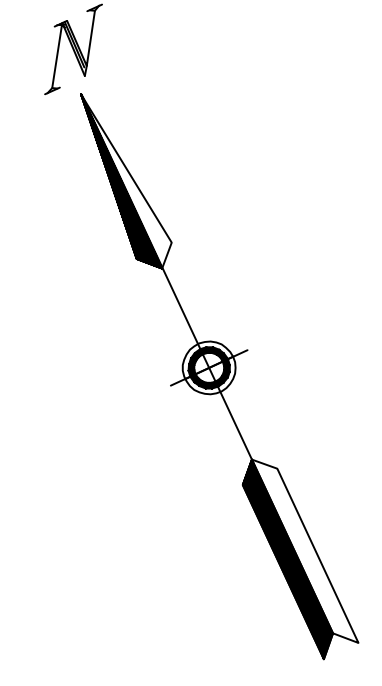
MATCH LINE  
SEE SHEET 5

**U.S. HIGHWAY NO. 61**  
(MAPLEWOOD DRIVE)

**KELLER LAKE**

Dated this 25th day of July, 2012

Certified by: Mark S. Hanson  
Mark S. Hanson, P.L.S. Minn. Lic. No. 15480



**SUNDE**  
LAND SURVEYING

9001 East Bloomington Freeway (35W) • Suite 118  
Bloomington, Minnesota 55420-3435  
952-881-2455 (Fax: 952-888-9526)  
[www.sunde.com](http://www.sunde.com)

File: 2012023A001.dwg Sheet: **6 of 6**

L:\2007\matt\US - Templates\US - Standard Layout.dwg 9/7/2011 12:40:58 PM CDT