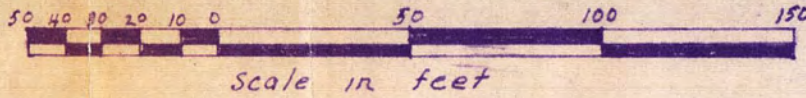


REGISTERED LAND SURVEY NO.

SCALE: 1 inch = 50 feet



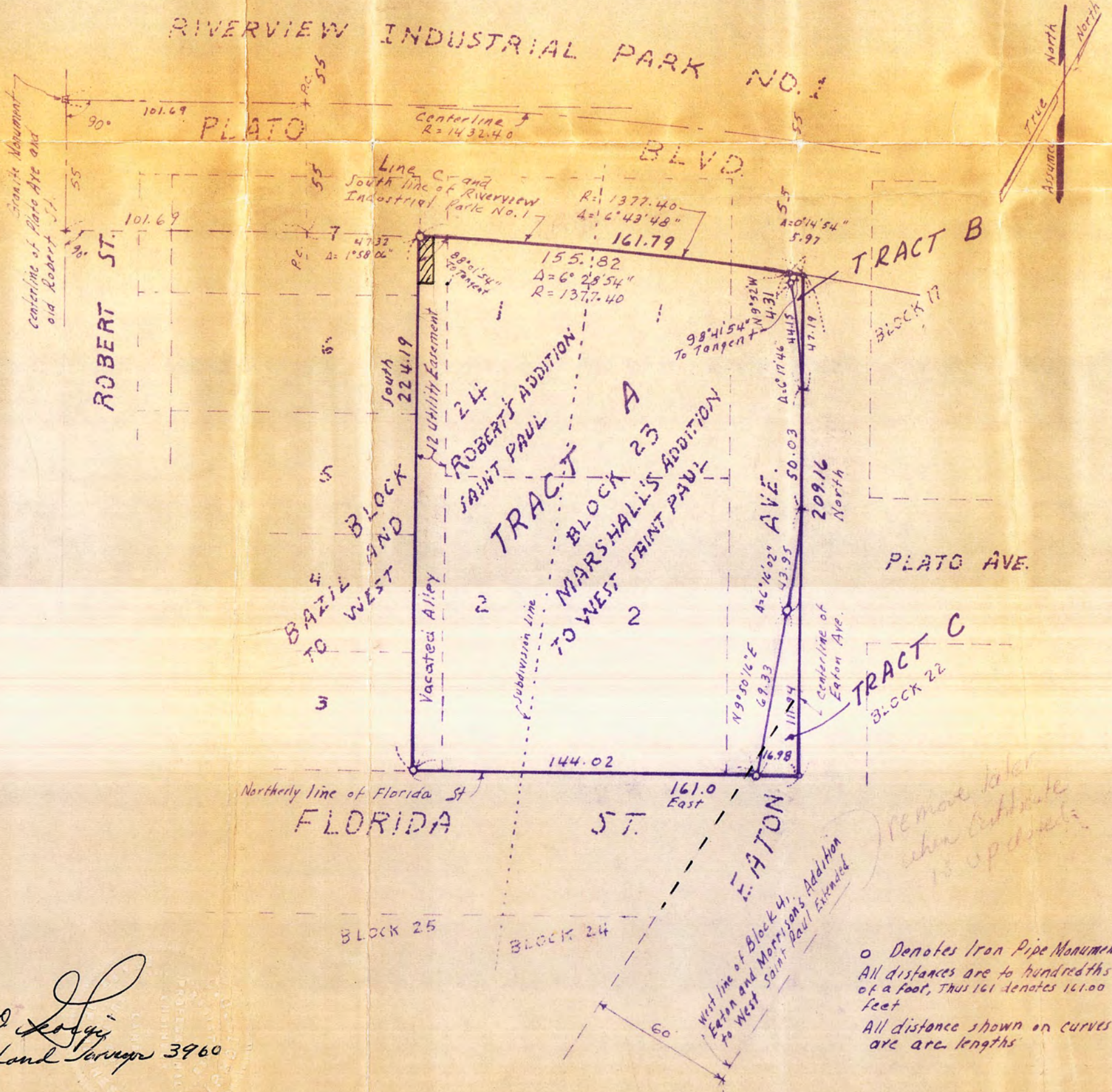
CHARLES O. GEORGI COMPANY
CIVIL ENGINEERING & LAND SURVEYING.

I hereby certify that in accordance with the provisions of Chapter 508, Minnesota Statutes of 1949, as amended, I have surveyed the following described tract of land in the County of Ramsey, State of Minnesota, to wit:

(see attached sheet that needs verification for use)

October 30, 1973

49



Remove later when Certificate is updated.

o Denotes Iron Pipe Monuments.
All distances are to hundredths of a foot, thus 161 denotes 161.00 feet.
All distance shown on curves are arc lengths.

Charles O. Georgi
Registered Land Surveyor 3960

HERMAN ST.

Opening
Scale: 150ft. to 1 inch

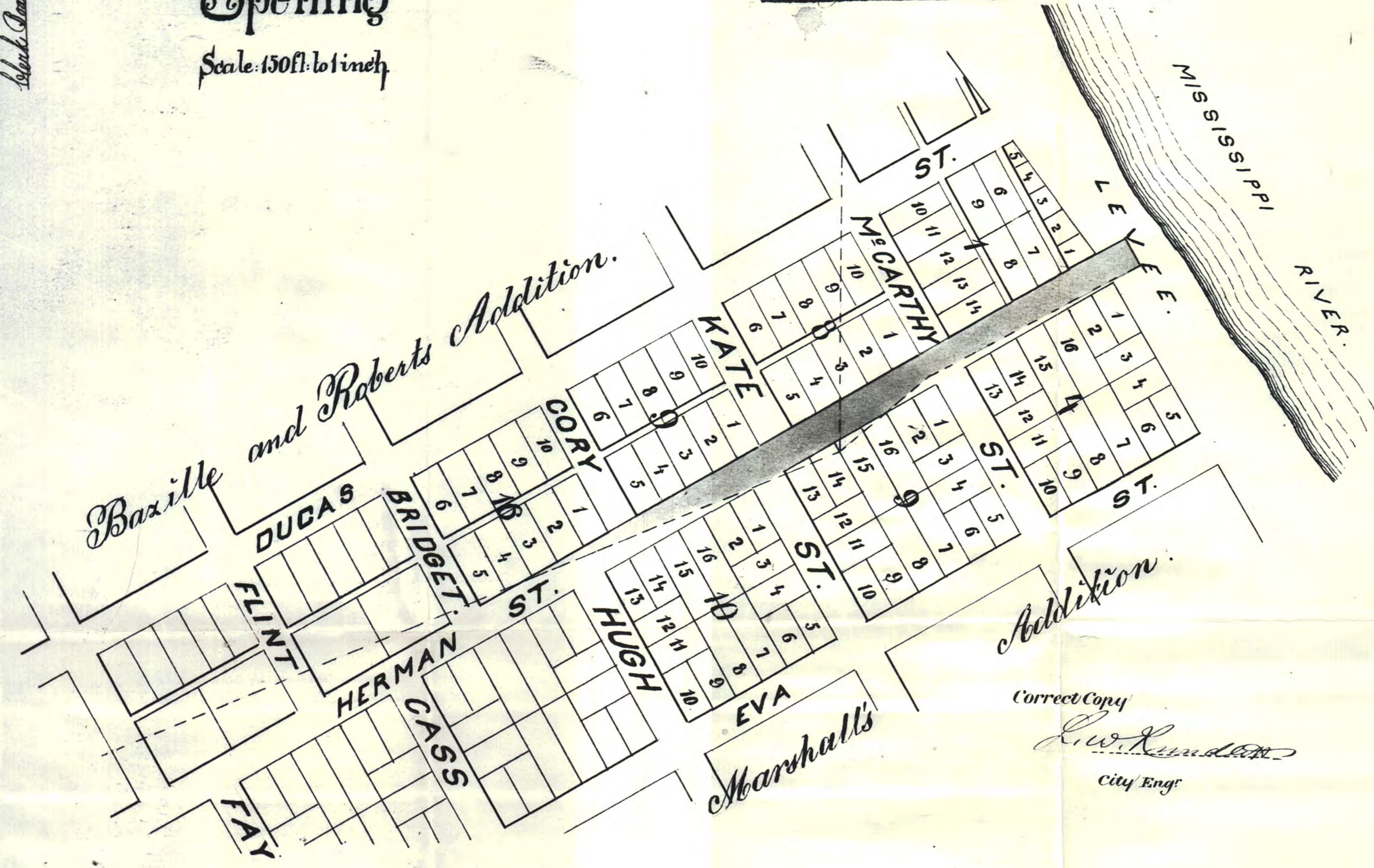
STATE OF MINNESOTA, ss.
County of Ramsey.
Office of the Register of Deeds.
This is to certify that the within instrument was filed for record in this Office, at St. Paul, on the ... day of March, A. D. 1884, at ... o'clock P. M., and that the same was duly recorded in Book 3, of ... pages. 3.

By: *[Signature]*
Register of Deeds.

Herman St. opened under an order of the Common Council, Nov. 10th 1883, and Recorded in Vol. 8, Page 42, Board of Public Works Assessment Records. Confirmed by the Board of Public Works March 24th 1884.

Eaton St. opened under an order of the Common Council, Nov. 22nd 1883 and Recorded in Vol. 8, Page 84, Board of Public Works Assessment Records. Confirmed by the Board of Public Works May 19th 1884.

Official: *R. L. Gorman*
Clerk Board of Public Works



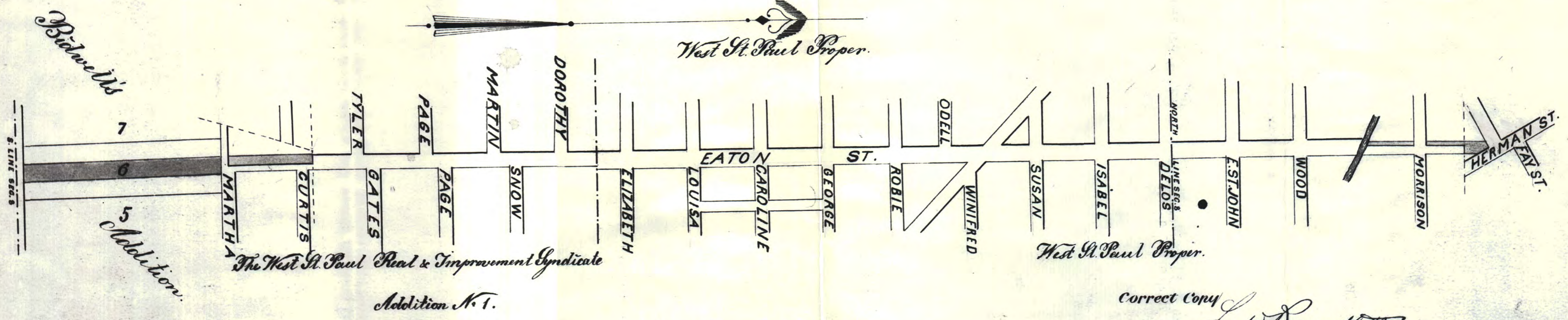
Correct Copy
L. W. Rundlett
City Eng.

EATON ST.

Opening
Scale: 300ft. to 1 inch

STATE OF MINNESOTA, ss.
County of Ramsey.
Office of the Register of Deeds.
This is to certify that the within instrument was filed for record in this Office, at St. Paul, on the ... day of March, A. D. 1884, at ... o'clock P. M., and that the same was duly recorded in Book 3, of ... pages. 3.

By: *[Signature]*
Register of Deeds.



Correct Copy
L. W. Rundlett
City Eng.

Official: *R. L. Gorman*
Clerk Board of Public Works