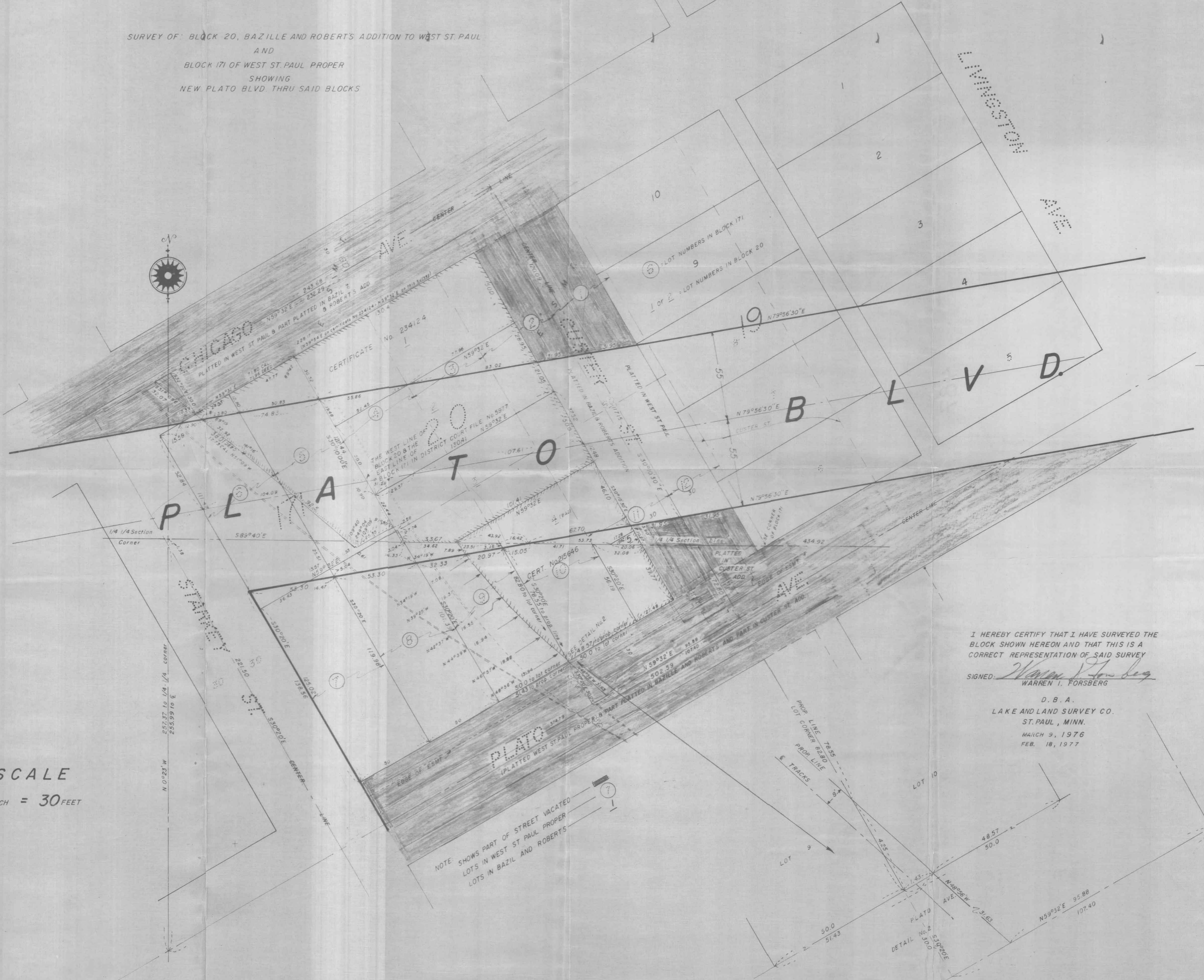


487

# HOUSING AND REDEVELOPMENT AUTHORITY OF THE CITY OF ST. PAUL

SURVEY OF: BLOCK 20, BAZILLE AND ROBERTS' ADDITION TO WEST ST. PAUL  
AND  
BLOCK 171 OF WEST ST. PAUL PROPER  
SHOWING  
NEW PLATO BLVD THRU SAID BLOCKS



SCALE  
1 INCH = 30 FEET

I HEREBY CERTIFY THAT I HAVE SURVEYED THE  
BLOCK SHOWN HEREON AND THAT THIS IS A  
CORRECT REPRESENTATION OF SAID SURVEY

SIGNED: *Warren I. Forsberg*  
WARREN I. FORSBERG

D. B. A.  
LAKE AND LAND SURVEY CO.  
ST. PAUL, MINN.  
MARCH 9, 1976  
FEB. 18, 1977

NOTE: SHOWS PART OF STREET VACATED  
LOTS IN WEST ST. PAUL PROPER  
LOTS IN BAZIL AND ROBERTS