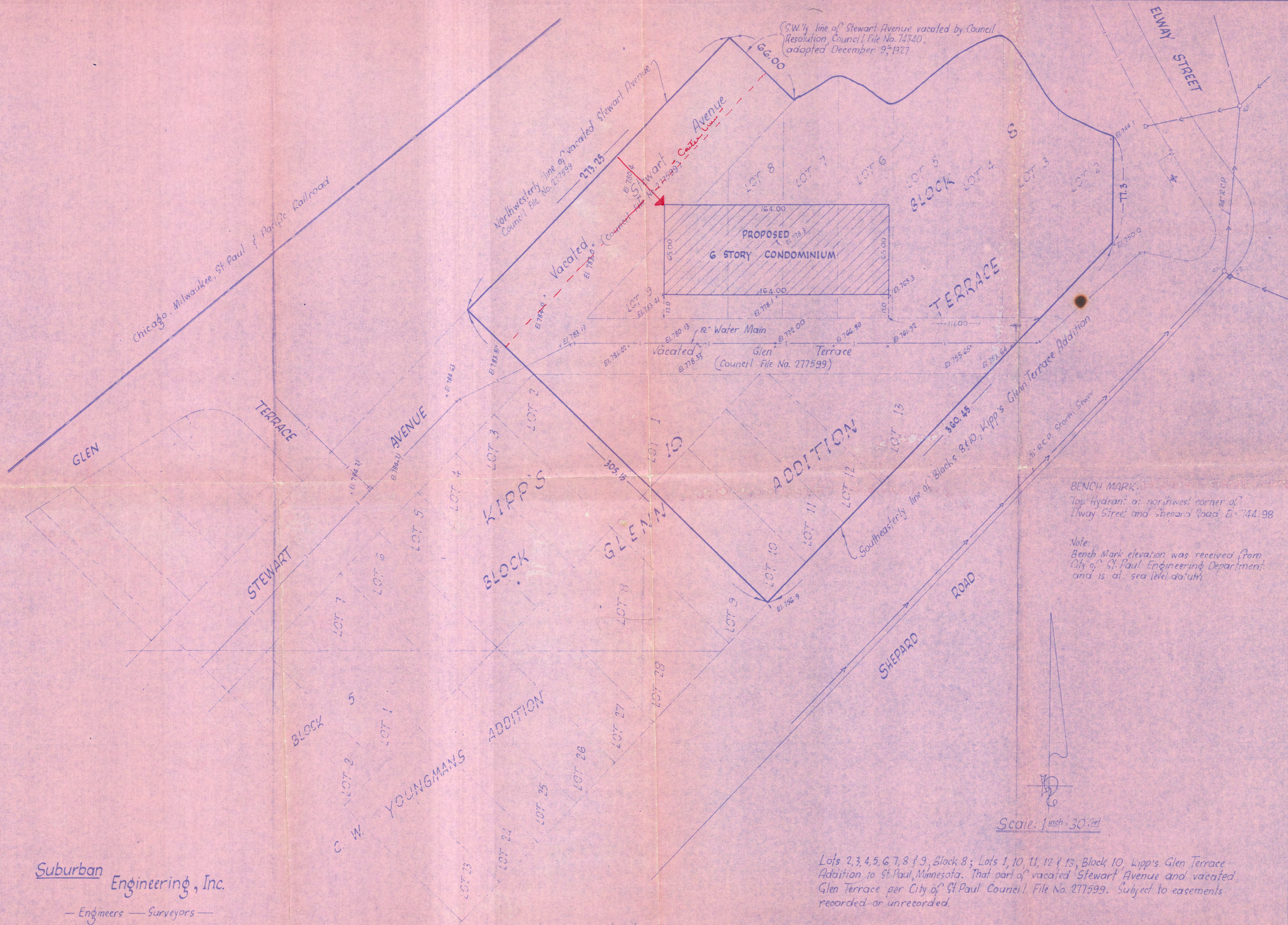




ASSOCIATED ARCHITECTS & ENGINEERS INC.  
 24 SOUTH CLEVELAND AVENUE  
 ST. PAUL, MINNESOTA 55105  
 (612) 601-6016

I HEREBY CERTIFY THAT THIS PLAN, SPECIFICATION OR REPORT WAS PREPARED BY ME OR UNDER MY DIRECT SUPERVISION AND THAT I AM A LICENSED PROFESSIONAL ENGINEER UNDER THE LAWS OF THE STATE OF MINNESOTA.

DATE \_\_\_\_\_ REG. NO. \_\_\_\_\_



BENCH MARK:  
 Top Hydrant at northwest corner of  
 Elway Street and Shepard Road El. 744.98

Note:  
 Bench Mark elevation was received from  
 City of St. Paul Engineering Department  
 and is at sea level datum.



Scale: 1 inch = 30 feet

Lots 2, 3, 4, 5, 6, 7, 8 & 9, Block 8; Lots 1, 10, 11, 12 & 13, Block 10, Kipp's Glen Terrace Addition to St. Paul, Minnesota. That part of vacated Stewart Avenue and vacated Glen Terrace per City of St. Paul Council File No. 277599. Subject to easements recorded or unrecorded.

Suburban Engineering, Inc.  
 — Engineers — Surveyors —

November, 1981

COMM. NO.	
DRAWN	
CHECKED	
DATE	
REVISED	
SHEET	
OF	