

#9919

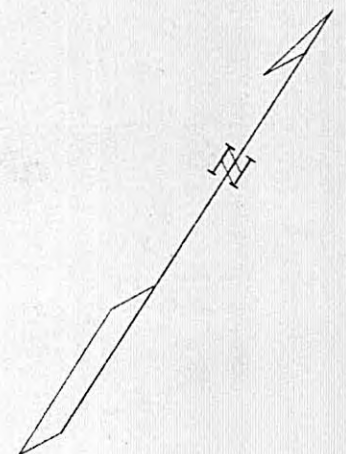
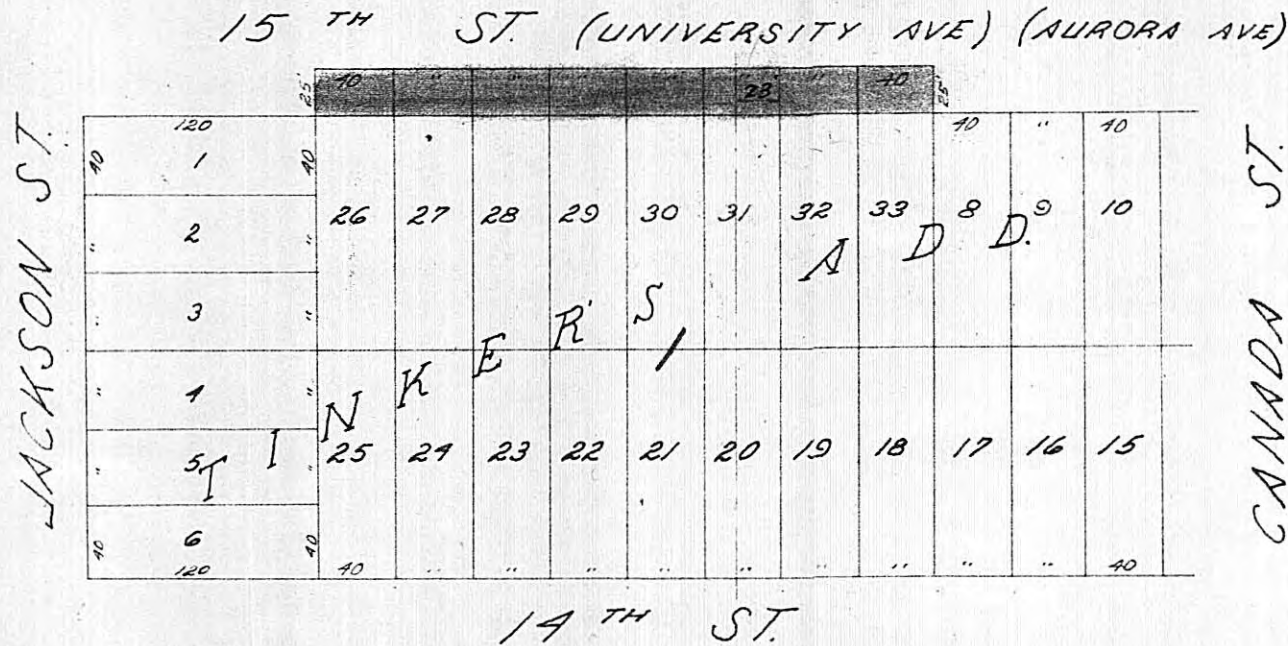
AURORA AVE. 9919

PART OF LOTS 31, 32 & 33 BIK I TINKER'S ADD.

Bureau of Engineers

Jan. 20, 1960

Scale 1" = 100'



I hereby certify that this is a true & correct copy of part of a plat known as Tinker's Add. showing the opening of Aurora Ave. as opened by the Common Council & approved July 14, 1871

N. J. Goldberg  
Office Engineer Dept. of Public Works

AURORA AVE.  
Parts of lots 31, 32 &  
33 BIK I Tinker's Add.  
MISCELLANEOUS  
Dr. 5 No 720