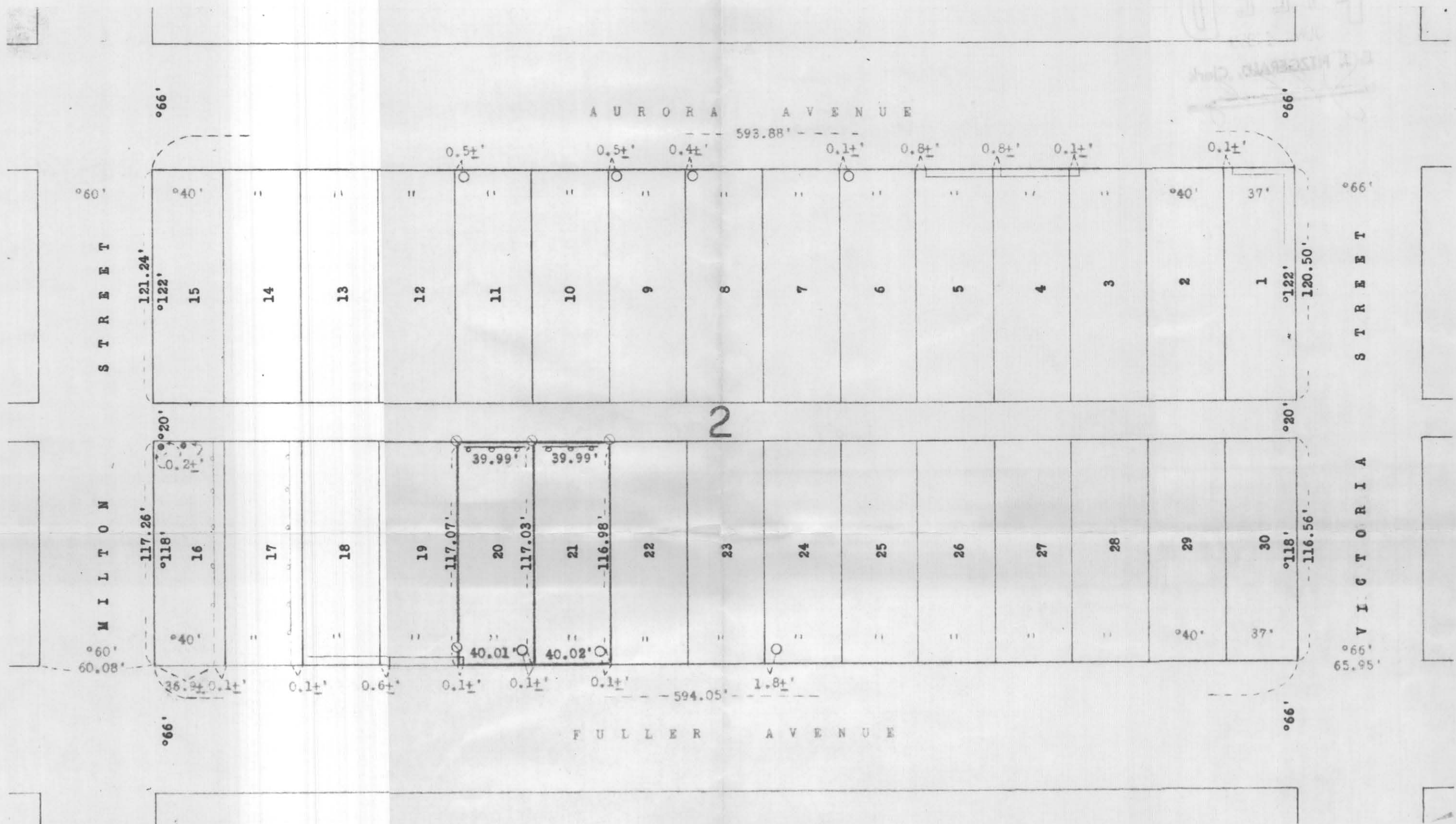


PLAT OF SURVEY
 FOR WM. J. MONTGOMERY, ST. PAUL, MINNESOTA
 LOTS 20 & 21, BLOCK 2, MILTON ADDITION TO ST. PAUL, RAMSEY COUNTY, MINNESOTA



LEGEND:

- IRON MONUMENT INPLACE
- IRON MONUMENT SET ON DATE OF SURVEY
- RETAINING WALL INPLACE LONGER THAN TEN YEARS
- STEEL FENCE POST INPLACE CUT OFF OR RUSTED OFF AT GROUND LINE
- FENCE INPLACE LONGER THAN TEN YEARS
- DIMENSIONS FROM ORIGINAL PLAT

SCALE:

One Inch = Fifty Feet
 (Lots 15 & 16 scale 37')

NOTE:

ALL DIMENSIONS ARE SHOWN IN FEET OR DECIMALS OF A FOOT

I HEREBY CERTIFY THAT THIS IS A TRUE AND CORRECT REPRESENTATION OF A SURVEY OF THE BOUNDARIES OF LOTS 20 & 21, BLOCK 2, MILTON ADDITION TO ST. PAUL, RAMSEY COUNTY, MINNESOTA AND THAT THIS PLAT DOES NOT PURPORT TO SHOW BUILDINGS OR ENCROACHMENTS. LOTS 20 & 21 HAVE NO ENCROACHMENTS

DATED JUNE 1, 1959
 ST. PAUL, MINNESOTA

Gus C. Biohaugh
 REGISTERED LAND SURVEYOR
 MINNESOTA REGISTRATION NO. 199

STATE OF MINNESOTA) S.S.
 COUNTY OF RAMSEY

Above Certificate subscribed and sworn to before me this 3rd day of June, 1959

Stephen L. Maxwell
 STEPHEN L. MAXWELL
 Notary Public, Ramsey County, Minn.
 My Commission Expires Oct. 5, 1960

9808