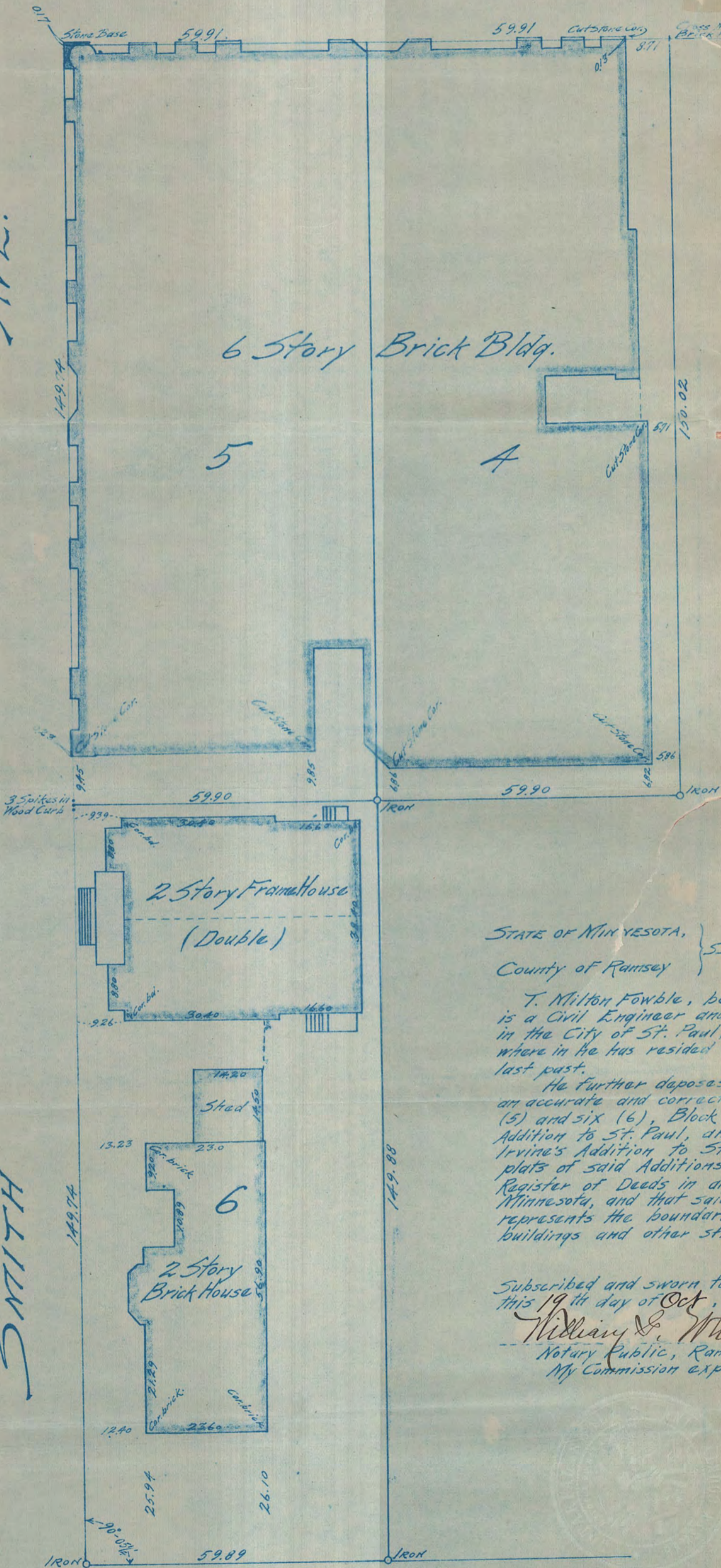


9<sup>TH</sup>. ST.

AVE.



STATE OF MINNESOTA, }  
 County of Ramsey } SS.

T. Milton Fowble, being duly sworn doth depose and say that he is a Civil Engineer and Surveyor practicing his profession as such in the City of St. Paul, County of Ramsey and State of Minnesota, where in he has resided and practiced his profession for many years last past.

He further deposes and says that the diagram hereto attached is an accurate and correct survey and diagram of Lots four (4), five (5) and six (6), Block Fifty-six (56) lying partly in Rice & Irvine's Addition to St. Paul, and partly in Irvine's Enlargement of Rice & Irvine's Addition to St. Paul, according to the respective recorded plats of said Additions on file and of record in the office of the Register of Deeds in and for the County of Ramsey and State of Minnesota, and that said diagram and survey accurately shows and represents the boundaries of said lots and the location of all buildings and other structures situated upon the same.

J. Milton Fowble

Subscribed and sworn to before me  
 this 19<sup>th</sup> day of Oct, A.D. 1910.

William S. White  
 Notary Public, Ramsey County, Minn.  
 My Commission expires

SMITH

6<sup>TH</sup>. ST.